

HOUSTON, TEXAS www.liftmoore.com
PHONE: (713) 688-5533 • FAX: (713) 688-6324
FAX: (800) 824-5559 (USA & CANADA)

Operating & Installation Instructions

Manual Out / Hydraulic Down 72k ft.lbs. Outriggers

!ATTENTION!

KEEP THIS MANUAL WITH THE CRANE. OPERATION INSTRUCTIONS ARE CONTAINED IN A SEPARATE MANUAL. NEW OPERATORS SHOULD READ AND BE FAMILIAR WITH THE OPERATING INSTRUCTIONS BEFORE OPERATING THIS CRANE.

ORDER PARTS USING PART NUMBER, CRANE MODEL NUMBER AND CRANE SERIAL NUMBER TO ASSURE ACCURACY OF ORDERS.

**TABLE OF CONTENTS
P/N 21055**

**MANUAL OUT / HYDRAULIC DOWN OUTRIGGER
72k ft.lbs.**

DESCRIPTION

LOCATION

TABLE OF CONTENTS.....	FORM 1201-B / P.2
OPERATING INSTRUCTIONS.....	FORM 1201-B / P.3
INSTALLATION INSTRUCTIONS	FORM 1201-B / P.4
CENTER TUBE DIMENSIONS TABLE	FORM 1964-0 / P.5
INSTALLATION DRAWING.....	DRAWING 50541-B
OUTRIGGER ASSEMBLY DRAWING	DRAWING 58145-A
DETENT ASSEMBLY DRAWING.....	DRAWING 32492-C
HYDRAULIC SCHEMATIC.....	DRAWING 50502-0



OPERATING INSTRUCTIONS

MANUAL OUT / HYDRAULIC DOWN OUTRIGGER 72k ft.lbs.

Always keep the truck as level as possible when operating the crane. Set the outriggers on firm ground that will not yield under load.

Check for overhead obstructions and especially for electrical wires. The crane must always be more than 10 Feet away from any electrical wires.

Raise the outrigger detent pin and pull the outrigger out until the pin is engaged in the stop hole. Do not use the outrigger unless this pin is fully engaged. There are only two positions for the pull out section, either fully retracted or fully extended.

Set the truck's parking brake before operating either the outrigger or crane. Insert wheel chocks under the front wheels before setting up the outrigger.

Start the engine and set the pump to supply fluid to the crane and outrigger.

Set the diverter valve to send flow to the outrigger directional control valve.

Next, use the directional valve to extend the jack cylinders. Lower the jack until there is lifting of the truck bed. The higher the truck, the less the truck must tilt to counter-balance the crane and its load. Leave the truck wheels in contact with the ground.

WARNING: The jack cylinders will crush anything underneath them. Check that everyone and everything is clear of the jacks before they are lowered.

Next, use the directional valve to extend the jack cylinders. Lower the jack until there is lifting of the truck bed. The higher the truck, the less the truck must tilt to counter-balance the crane and its load. Leave the truck wheels in contact with the ground.

Do not move the outrigger extension in or out without raising the jack cylinder off the ground. Doing this can damage the jack cylinder.

The outrigger is set and the crane is ready for use. After setting the jack cylinders, shift the diverter valve to supply hydraulic power to the crane. Do not change the diverter valve until crane operation has ceased.

NOTE: At no time should the tire on the opposite side from the lifting side be raised off of the ground. If this occurs and you are sure the load is within the rating of the crane's load radius chart, relocate the truck closer to the load.

Do not move the truck with the jack cylinders extended. Bending and breakage may occur. Retract the jack cylinders completely before moving the truck.

Do not operate the crane until you have read and understand the crane's operation as explained in the crane's owner/operator manual.

To store the outrigger, raise the outrigger jack so that the hydraulic cylinders are fully retracted. Then use the directional valve to retract the power extend sections.



INSTALLATION INSTRUCTIONS

MANUAL OUT / HYDRAULIC DOWN OUTRIGGER 72k ft.lbs.

Read these instructions completely before starting installation.

This kit includes the outrigger center tube, two hydraulic jack cylinders, one two-spool directional valve, a diverter valve, and hose and fittings needed to connect these items. Hose for the pump to outrigger connection is not included.

Before mounting the outrigger center tube, orient the outrigger so that the manual extend section is on the same side of the truck as the crane. Also, plan the hose routing to the jack cylinders. A gap must be left to allow these hoses to flex whenever the extend sections of the outrigger is moved in or out from the body.

IMPORTANT: The outrigger center tube must be supported at the truck frame, at its outer end under the crane's structural support, and at the end opposite the crane. The center tube should not be supported by the body sheet metal.

After the center tube is mounted, position the hydraulic jack cylinders so that they will extend at least 6" below ground level when the truck is level. Stroke of the jack cylinders is 20 inches. Mount the jack cylinders to the power extend sections using the four 1/2-13 x 4.0" Grade 8 Cap Screws supplied.

Refer to Drawing No. 50468 for a hydraulic schematic of this installation. Mount the diverter valve and directional control valves for convenient operation. The diverter valve is used to send hydraulic fluid *either* to the crane *or* to the outrigger. Installation of this valve will prevent inadvertent operation of the jack cylinders when the crane is being used.

Note the "In" and "Out" ports on the directional control valve. Connect the valve "In" port to the pump pressure port. Connect the "Out" port to return flow to the reservoir through a 10 micron filter.

Make up hoses as needed using the hose and reusable hose ends supplied. Hoses may be switched at the valve bank to coordinate the valve lever movement and cylinder direction.

Hydraulic flow to the outriggers should be limited to 2.5 GPM. At this flow rate the jack cylinder will move its 20" stroke in approximately 15 seconds. Higher flows may result in noisy operation.

Fill with hydraulic oil and bleed air out by fully extending the cylinders. We use Chevron AW Hydraulic Oil 46 or equivalent. When operating for the first time, it is best to extend all cylinders completely without stopping. This will evacuate the air from the cylinder's rod end and less air will be trapped in the rod end if this is done.

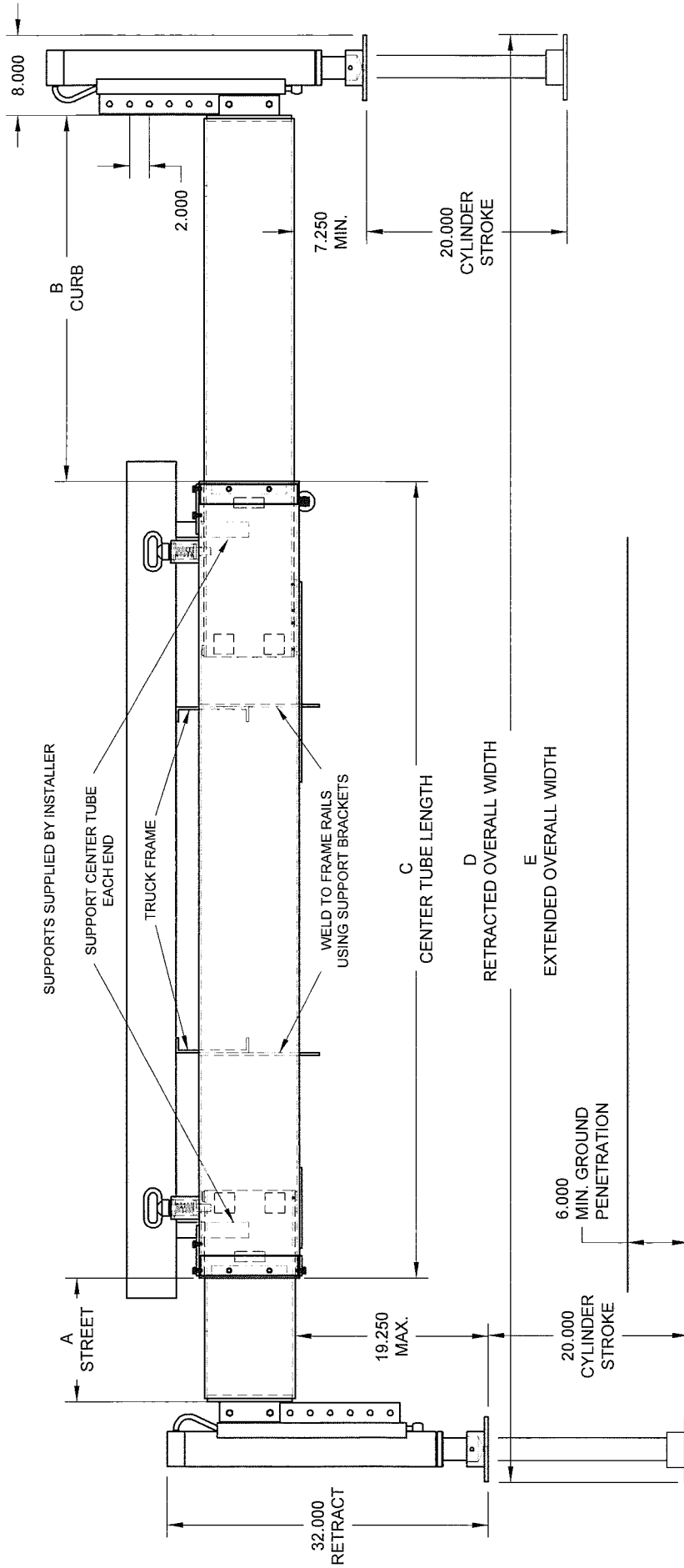
Place labels on the jack cylinder warning of crushing injury.



OUTRIGGERS CENTER TUBE DIMENSIONS TABLE

<i>Outrigger Model</i>	<i>Center Tube Size</i>
<i>Outrigger 10K</i>	<i>2.50'' X 5.00''X 0.18'' W</i>
<i>Outrigger 12K</i>	<i>2.50'' X 5.00''X 0.18'' W</i>
<i>Outrigger 18K</i>	<i>4.00'' X 6.00''X 0.25'' W</i>
<i>Outrigger 25K</i>	<i>5.00'' X 7.00''X 0.18'' W</i>
<i>Outrigger 36K</i>	<i>6.00'' X 8.00''X 0.18'' W</i>
<i>Outrigger 50K</i>	<i>7.00'' X 9.00''X 0.18'' W</i>
<i>Outrigger 72K</i>	<i>8.00'' X 10.00''X 0.25'' W</i>





MODEL 38719	DESCRIPTION 36CMOHD-12SMOHD	DIMENSION A 12"	DIMENSION B 36"	DIMENSION C 79.5"	DIMENSION D 96.5"	DIMENSION E 144.5"
MODEL 38938	DESCRIPTION 42CMOHD-SFXHD	DIMENSION A 0"	DIMENSION B 42"	DIMENSION C 79.5"	DIMENSION D 96.5"	DIMENSION E 138.5"

DRAWING NO. 50541-B

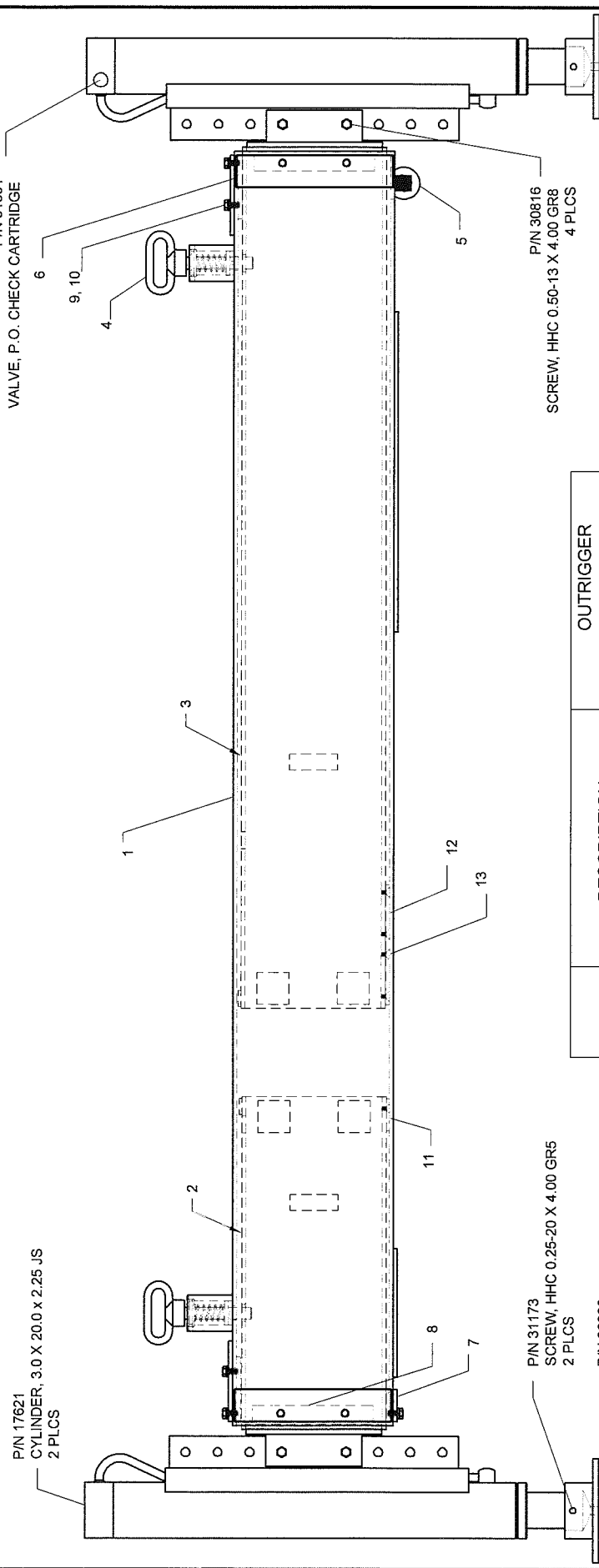
OUTRIGGER 72K MOHD INST

DRWN BY: JC
DATE: 10/09/08

Houston TX
(713)-688-5533
www.liftmoore.com



P/N 31591
VALVE, P. O. CHECK CARTRIDGE



P/N 17621
CYLINDER, 3.0 X 20.0 X 2.25 JS
2 PLCS

P/N 31173
SCREW, HHC 0.25-20 X 4.00 GR5
2 PLCS

P/N 30833
NUT, HEX NYLOC 0.25-20 GR2
2 PLCS

P/N 31110
WASHER, FLAT 0.25 GR5 PLATED
4 PLCS

P/N 17931
BASE, JACK HYD. 25K OUTRIGGER
2 PLCS

P/N 30816
SCREW, HHC 0.50-13 X 4.00 GR8
4 PLCS

P/N 30835
NUT, HEX NYLOC 0.50-13 GRADE 5
4 PLCS

P/N 19323
WASHER, FLAT 0.50 SAE GR8
8 PLCS

ITEM	DESCRIPTION	OUTRIGGER	
		38719 QTY	38938 QTY
1	CENTER OUTR.	21045	22848
2	STREET SIDE OUTR.	21050	NONE
3	CURB SIDE OUTR.	21048	22846
4	DETENT ASSY	32492 2	32492 1
5	ROLLER ASSEMBLY	34021 1	34021 1
6	TOP SPACER	20519 2	20519 1
7	BOTTOM SPACER	20398 2	NONE
8	SIDE SPACER	21052 2	21052 1
9	SCREW	30459 14	30459 6
10	LOCK WASHER	32367 14	32367 6
11	SMALL NYLON PAD	20396 1	NONE
12	LARGE NYLON PAD	19715 1	19715 1
13	SCREW	33614 10	33614 8

*SEE INSTALLATION DRAWING FOR OUTRIGGER MODEL NUMBER DESCRIPTION

Houston TX
(713)-688-5533
www.liftmoore.com



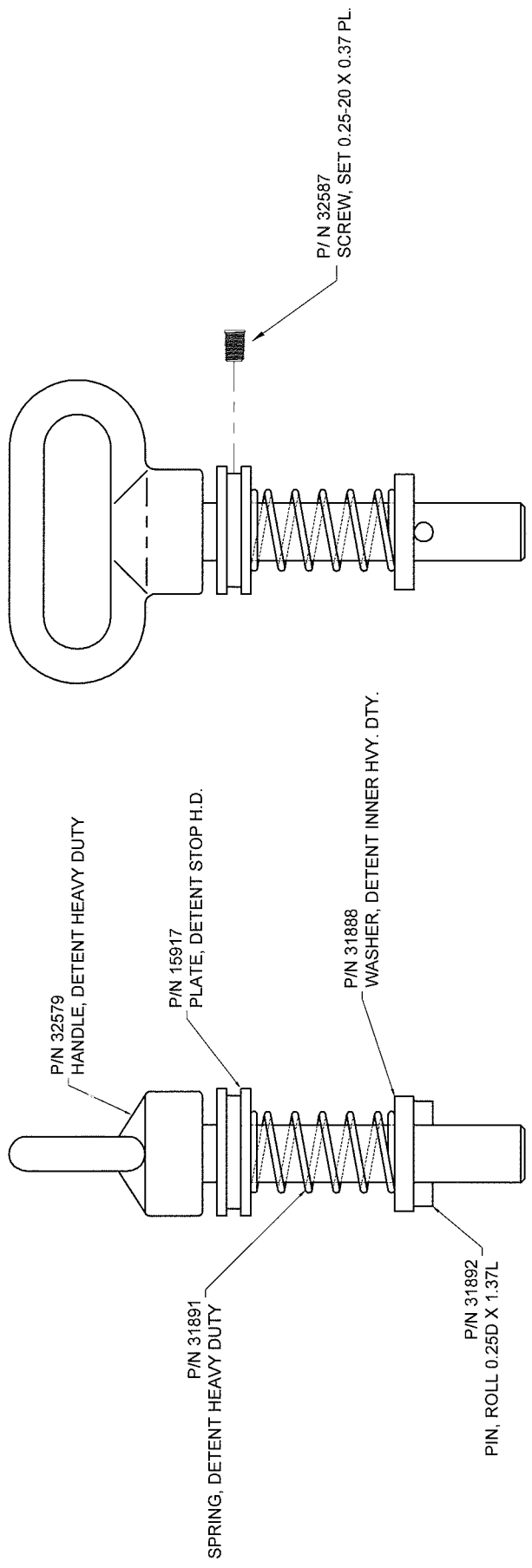
OUTRIGGER 72K MOHD PARTS

DRAWING NO.

58145-A

DRWN BY: JC

DATE: 7/31/08



P/N 32579
HANDLE, DETENT HEAVY DUTY

P/N 15917
PLATE, DETENT STOP H.I.D.

P/N 31888
WASHER, DETENT INNER HVY. DTY.

P/N 31891
SPRING, DETENT HEAVY DUTY

P/N 31892
PIN, ROLL 0.25D X 1.37L

P/N 32587
SCREW, SET 0.25-20 X 0.37 PL.

Houston TX
(713)-688-5533
www.liftmoore.com



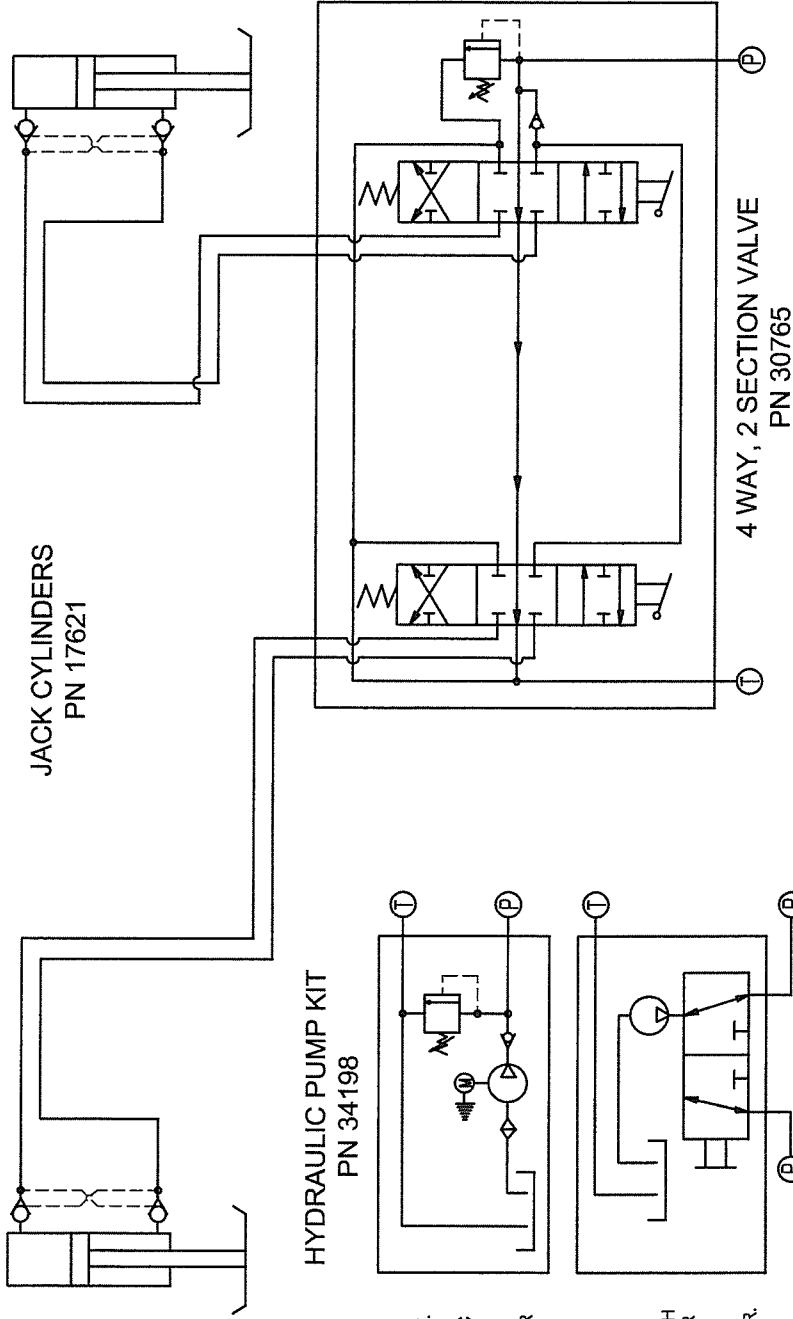
DRWN BY: JC
DATE: 01/24/07

DETENT, INNER ASSEMBLY H.I.D.

DRAWING NO.
32492-C

STREET SIDE

CURB SIDE



JACK CYLINDERS
PN 17621

HYDRAULIC PUMP KIT
PN 34198

4 WAY, 2 SECTION VALVE
PN 30765

OPTION 2:
FOR ELECT.
CRANES;
HYDRAULIC
PUMP UNIT
WITH
RESERVOIR

OPTION 1:
FOR HYDR.
CRANES;
DIVERTER
VALVE WITH
CUSTOMER
SUPPLIED
PUMP AND
RESERVOIR.

3-WAY DIVERTER VALVE
PN 32332

CRANE
OUTRIGGER

NOTES: PLUMB "P" PORTS AND "T" PORTS BETWEEN
OUTRIGGER SYSTEM AND FLUID POWER SOURCE.



Houston TX
(713)-688-5533
www.liftmoore.com

DRWN BY: SJN

DATE: 8/12/02

SCHEM, HYD. OUTRIGR MOHD

DRAWING NO.

50502-0