

TEXAS 77040 WWW.LIFTMOORE.COM
PHONE: (713) 688-5533 • FAX: (713) 688-6324
FAX: (800) 824-5559 (USA & CANADA)

Operating & Installation Instructions

Manual Out / Crank Down 10K Ft.-Lb. Outriggers

!ATTENTION!

KEEP THIS MANUAL WITH THE CRANE. OPERATION INSTRUCTIONS ARE CONTAINED IN A SEPARATE MANUAL. NEW OPERATORS SHOULD READ AND BE FAMILIAR WITH THE OPERATING INSTRUCTIONS BEFORE OPERATING THIS CRANE.

ORDER PARTS USING PART NUMBER, CRANE MODEL NUMBER AND CRANE SERIAL NUMBER TO ASSURE ACCURACY OF ORDERS.

TABLE OF CONTENTS
MANUAL OUT / CRANK DOWN OUTRIGGER
10K FT.-LB.

<u>DESCRIPTION</u>	<u>LOCATION</u>
TABLE OF CONTENTS.....	F1110 / P.2
OPERATING INSTRUCTIONS.....	F1110 / P.3
INSTALLATION INSTRUCTIONS	F1110 / P.4
INSTALLATION DRAWING.....	DWG.50299-B
OUTRIGGER ASSEMBLY DRAWING.	DWG.58110-B
DETENT PIN ASSEMBLY	DWG.32491-0



OPERATING INSTRUCTIONS

MANUAL OUT / CRANK DOWN OUTRIGGER 10K FT.-LB.

Before using the crane, the outriggers must be set properly. Blocking the front wheels of the truck and setting the parking brake is advised to prevent the truck from rolling.

Always keep the truck as level as possible when operating the crane. Set the outriggers on firm ground that will not yield under load.

Check for overhead obstructions and especially for electrical wires. The crane must always be more than 10 Feet away from electrical wires.

Raise the outrigger detent pin and pull the outrigger out until the pin is engaged in the stop hole. Do not use the outrigger unless this pin is fully engaged. There are only two positions for the pull out section, either fully retracted or fully extended.

Manually lower the innermost telescoping portion of the jack by pulling out a hitch pin, which hold the manual outrigger section in place. Select a desire height then place the hitch pin into the outrigger hole. Use a hair clip pin to secure the hitch pin in place. Then crank the jack until there is lifting of the truck bed. The higher the truck, the less the truck must tilt to counterbalance the crane and the load. Leave the truck wheels in contact with the ground. If equipped, set the opposite side outrigger using the same method.

The outrigger is set and the crane is ready for use.

NOTE: At no time should the outrigger leg on the opposite side from the lifting side be raised more than 6 inches above the ground. If the outrigger rises to 6 inches, relocate the truck closer to the load to prevent this.

Do not operate the crane until you have read and understand the crane's operation as explained in the manual.

To put up the outrigger, crank the outrigger so that the cranked section is fully raised, then raise the manual portion by pulling out the hitch pin. After fully raise the manual portion, secure it with the hitch pin. Lift the detent pin and slide the outrigger in. Make sure the detent pin is engaged into the outrigger. The outrigger can slide out during a sharp turn if the detent pin is not engaged.



INSTALLATION INSTRUCTIONS

MANUAL OUT / CRANK DOWN OUTRIGGER 10K FT.-LB.

Refer to Drawing No. 50299 for outrigger layout.

Read these instructions completely before starting installation.

This kit includes the outrigger center tube, with manual pull-out section(s), and a crank down jack.

Before mounting the outrigger center tube, orient the outrigger so that the manual pull out section is on the same side of the truck as the crane.

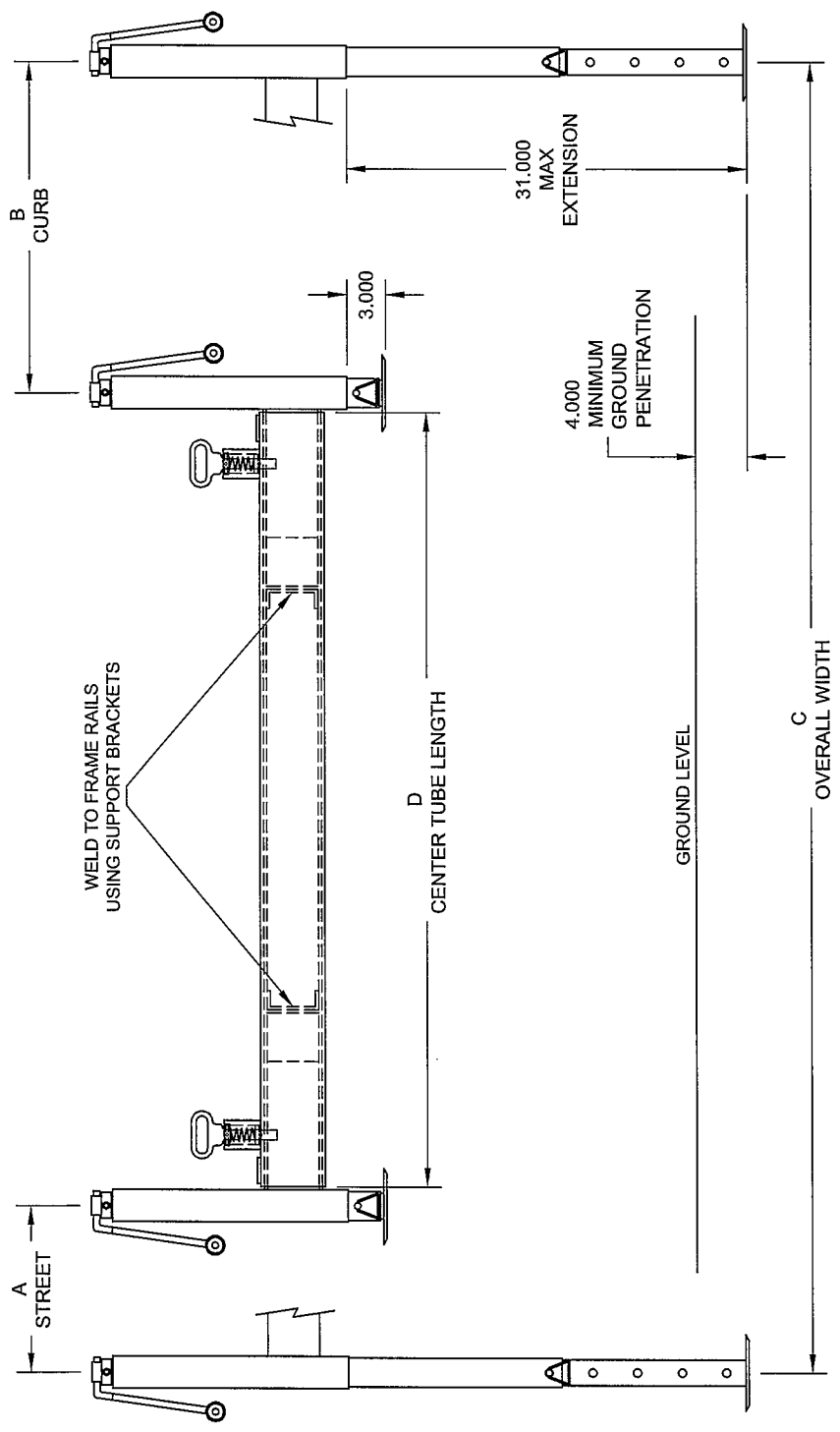
IMPORTANT: The outrigger center tube must be supported at the truck frame, at its outer end under the crane's structural support, and at the end opposite the crane. The center tube should not be supported by the body sheet metal.

Locate the outrigger as close to the crane as possible.

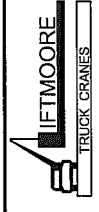
1. Set the outrigger with clearance from the truck body so that the pull out or extendable portion will clear the body when fully retracted. Set the vertical height so that the outrigger will be able to penetrate at least 6" below the ground. The outrigger jack is 24" long when retracted. It extends a maximum length of 50". The crank travel length is 12" and the total extension is 26".
2. Fabricate an "L" shaped mounting bracket similar to the one shown on drawing 50299 (also see drawing for center tube dimensions). The bracket is not furnished. **Weld** the cross tube securely to the bracket. This will provide support for the outrigger at the truck frames.
3. Weld the outer end of the cross tube securely to the crane support structure using 4" channel or stronger steel bars. This outer end of the cross tube must be supported to carry the crane load and prevent bending of the center tube, and/or truck body. This should be done below the crane and on the side opposite the crane.
4. Check the outrigger for operation. Especially note that the detent pins on the pull out and drop down sections fully engage in all operating positions.

Place labels on the crank down jacks warning of crushing injury. The outrigger is ready for use!





MODEL	DESCRIPTION	DIMENSION A	DIMENSION B	DIMENSION C	DIMENSION D
38446	24CMOCD-15SMOCD	24"	15"	112.0"	70"
38345	25CMOCD-25SMOCD	25"	25"	141.0"	88"
38030	30CMOCD-15SMOCD	30"	15"	129.0"	81"
38428	30CMOCD-15SMOCD	30"	15"	135.0"	86"
38383	30CMOCD-SFXCD	30"	0"	83.0"	50"
38509	36CMOCD-SFXCD	36"	0"	119.0"	81"
38831	25CMOCD-SMOCD	25"	25"	125.0"	72"
38841	30CMONJ-SFXNJ	0"	30"	119.0"	86"

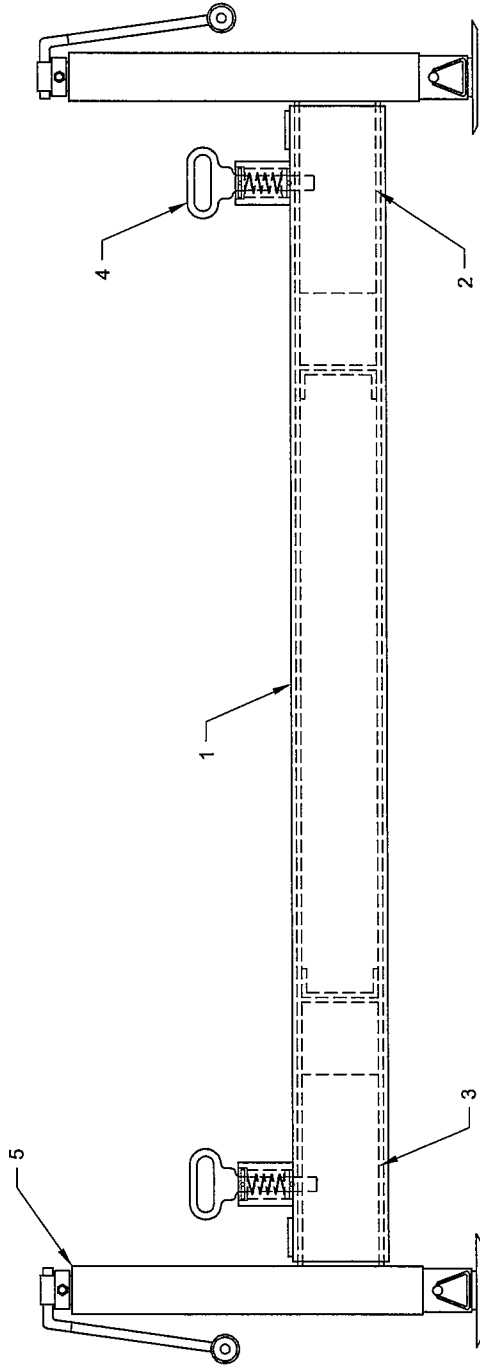


Houston TX
 (713)-688-5533
 www.liftmoore.com

DRWN BY: TV
 DATE: 04/20/06

OUTRIGGER 10K MOCD INST
 ALL 10K MOCD

DRAWING NO.
50299-B



ITEM	DESCRIPTION	OUTRIGGER*									
		38446	38345	38030	38428	38383	38509	38831	38841		
1	CENTER OUTRIGGER	18092	34112	33517	17761	18601	18601	22063	22151		
2	STEET SIDE OUTRIGGER	18097	34113	31168	31168	-	-	22066	-		
3	CURB SIDE OUTRIGGER	18095	34113	31169	31169	33988	18604	22066	22150		
4	DETENT ASSEMBLY	32491	32491	32491	32491	32491	32491	32491	32491		
5	CRANK DOWN JACK	30761	30761	30761	30761	30761	30761	30761	-		

*SEE INSTALLATION DRAWING (50299) FOR OUTRIGGER MODEL NUMBER DESCRIPTION



Houston TX
 (713)-688-5533
 www.iftimore.com

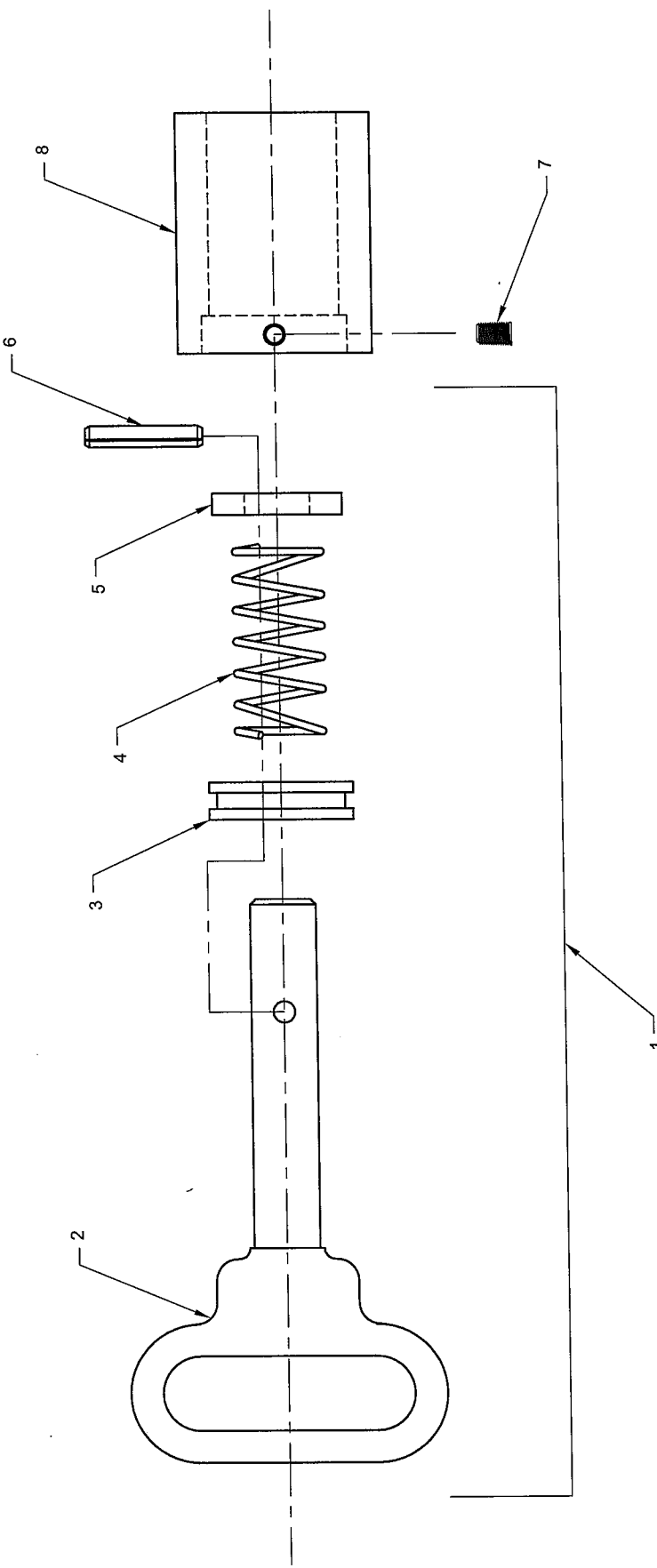
DRWN BY: TV

DATE: 04/20/06

OUTRIGGER 10K MOCD
 PARTS LIST

DRAWING NO.

58110-B



NOTE: THIS ASSEMBLY IS NO LONGER USED. DETENT TUBE (ITEM 8) IS CURRENTLY WELDED TO OUTRIGGER CENTER TUBE.

SEE DWG 32492

9/29/03 BLF

ITEM	P.N.	DESCRIPTION
1	32492	DETENT, INNER ASSEMBLY H.D.
2	32579	HANDLE, DETENT H.D.
3	15917	PLATE, DETENT STOP H.D.
4	31891	SPRING, DETENT HEAVY DUTY
5	31888	WASHER, DETENT INNER HVY. DTY.
6	31892	PIN, ROLL 0.25D X 1.37L
7	32587	SCREW, SET 0.25-20 X 0.37 PL.
8	15918	TUBE, DETENT BODY H.D. PLATED



Houston TX
(713)-688-5533
www.liftmoore.com

DRWN BY: SJN
DATE: 11/13/02

DETENT ASSEMBLY HEAVY DUTY
OUTRIGGERS

DRAWING NO.

32491-0