



LIFTMOORE CRANE 5000X

ELECTRIC POWERED CRANE
25,000 FT.-LB. MAX MOMENT RATING
5,000 LB. MAX CAPACITY

- Wireless Proportional Controls with Wi-Fi Diagnostics and Histogram
- Available Wired Pendant Control
- Unlimited Rotation
- 5000X-20 - Power Extension from 10 Ft. to 16 Ft. with manual pull out to 20 Ft.
- 5000X 12-20 - Power Extension from 12 Ft. to 20 Ft.



**BOOM MOUNTED
PLANETARY GEAR WINCH**

**POWER BOOM
ELEVATION**

**WP CONTROL SYSTEM
WITH ONBOARD WIFI
DIAGNOSTICS AND
HISTOGRAM**

**WORM GEAR
ROTATION ON GEAR
BEARING SLEWING RING**

**WIRELESS
PROPORTIONAL
CONTROLS**



LIFTMOORE CRANE 5000X

SPECIFICATIONS

COMPLIANCE

The Model 5000X is designed, tested, and manufactured in accordance with ASME B30.5 and OSHA 1910.180 requirements.

The final stage manufacturer is responsible for performing a stability test on the completed truck package.

MAX CAPACITY

5,000 Lbs.

MAX MOMENT RATING

25,000 Ft.-Lbs.

HOIST WINCH

The hoist winch is a planetary gear design with a 3,000 Lbs. single line, first layer capacity. Ratio between winch drum and wire rope meets ANSI requirements. The winch is powered by a 2.5 HP 12-volt DC series wound electric motor. First layer, no load line speed is 30 FPM.

WIRE ROPE AND SHEAVES

The crane is supplied with 5/16" x 80' galvanized aircraft cable. Breaking strength of the wire rope is 9,600 Lbs. meeting ANSI requirements. The wire rope is outside of the boom and visible for the operator's continual inspection. A traveling block is supplied for use either single or double line. A roller thrust bearing in the swivel hook provides easy rotation under load. All sheaves are non-metallic material for improved life of both the sheave and the wire rope. All sheaves meet ANSI requirements.

CONTROLS

Wireless Proportional Controls

Wireless proportional control with onboard WIFI diagnostics and histogram is standard equipment for this unit. The transmitter provides directional control of the crane as well as a trigger for speed control. The transmitter features a display providing the operator with real time information such as: transmitter battery status, signal strength, system voltage, available load as a percentage of capacity, active error codes, and the X / Y axis of the chassis if equipped with the optional chassis stability monitoring system. When connected, the included 25 Ft. C.A.N. cable powers the transmitter, charges the transmitter batteries, and bypasses the wireless function. This allows the transmitter to control the crane in areas where wireless transmission is compromised. The control includes a rechargeable battery system. A 12-volt power point charger is included. Optional engine controls and chassis stability monitoring system are available.

Wired Pendant Control

5000X model cranes are available with a 25 Ft. wired pendant control. Pendant control functions are on/off only, no proportional speed control is offered on the wired pendant control.

WIFI DIAGNOSTICS AND HISTOGRAM

The WP control system contains a WIFI feature that can be accessed with any device that has WIFI and a web browser, such as a smart phone, tablet, or laptop. Once connected to the control's WIFI, a static IP address is used to access the Liftmoore page. Available features include crane diagnostics and a histogram.

POWER SOURCE

5000X model cranes operate on a 12-volt DC operating system. An auxiliary battery is required and should be installed as close to the crane as possible. We recommend the use of either a single 'Group 4D' Deep Cycle battery or two 'Group 31' Deep Cycle batteries. A master disconnect switch, three circuit breakers, 30 Ft. of battery cable, and 3 Ft. of ground cable are included for standard truck installation.

ROTATION SYSTEM

Unlimited rotation is provided on a ball slewing ring type bearing with an external gear driven by a worm gearbox. The worm gearbox is driven by a low speed, high torque hydraulic motor. A bronze worm gear is used in the gearbox for best, smoothest operation. An electric swivel assembly enables the cranes continuous and unlimited rotation while connecting the power wire directly to the crane.

BOOM ELEVATION

The boom is capable of operating from -5 to +75 degrees. A double acting cylinder elevates the boom. The cylinder has an integral counterbalance valve. The counterbalance valve provides two safety purposes. It will hold the load in the event of a hose failure, and also functions as a relief valve when an overload condition is induced on the crane while controlling the rate of descent of the boom. The cylinder rod is chrome plated and seals in the cylinder are of U-Cup design for best possible load holding capability.

BOOM EXTENSION

5000X-20

A single hydraulic cylinder with an integral counterbalance valve extends the boom, under hydraulic power, from 10' to 16' and features a 4' manual pullout from 16' to 20'.

5000X 12-20

A single hydraulic cylinder with an integral counterbalance valve extends the boom, under hydraulic power, from 12' to 20'.

OVERLOAD PROTECTION

A transducer or pressure switch is included as standard equipment. Either device will limit overloads when using boom extend out, boom down, and winch up. Boom up is limited by the system's hydraulic pressure setting.

ANTI-TWO BLOCK

The 5000X includes an anti-two block feature that prevents contact between the boom tip and traveling block which could result in damaging or breaking the wire rope.

MOUNTING

Four 7/8" grade 8 hex head bolts are required for mounting. Base plate is 16.75" x 16.75". Bolt pattern is 14.75" x 14.75". Mounting bolts are not included.

BOOM REST

A boom rest is required to support the crane's boom while the vehicle is in motion. The boom rest can be purchased as an option from Liftmoore, Inc.

OUTRIGGER

Optional manual, manual and hydraulic, or full hydraulic outriggers are available from Liftmoore, Inc. Outriggers are necessary to keep the truck as level as possible, protecting the crane's rotation mechanism and the truck's suspension.

AVAILABLE OPTIONS

25K OUTRIGGERS

- Hydraulic curbside out and down, hydraulic streetside out and down
- Hydraulic curbside out and down, streetside fixed and hydraulic down
- Manual curbside out and hydraulic down, manual streetside out and hydraulic down
- Manual curbside out and crank down, manual streetside out and crank down.

BOOM RESTS

Available for the following mounting applications:

- Crane stowed horizontally
- Crane stowed elevated above horizontal
- Crane mounted on pedestal

25K PEDESTAL

- Variable height pedestal
- Height must be specified at time of order

LED Boom-Tip Lights

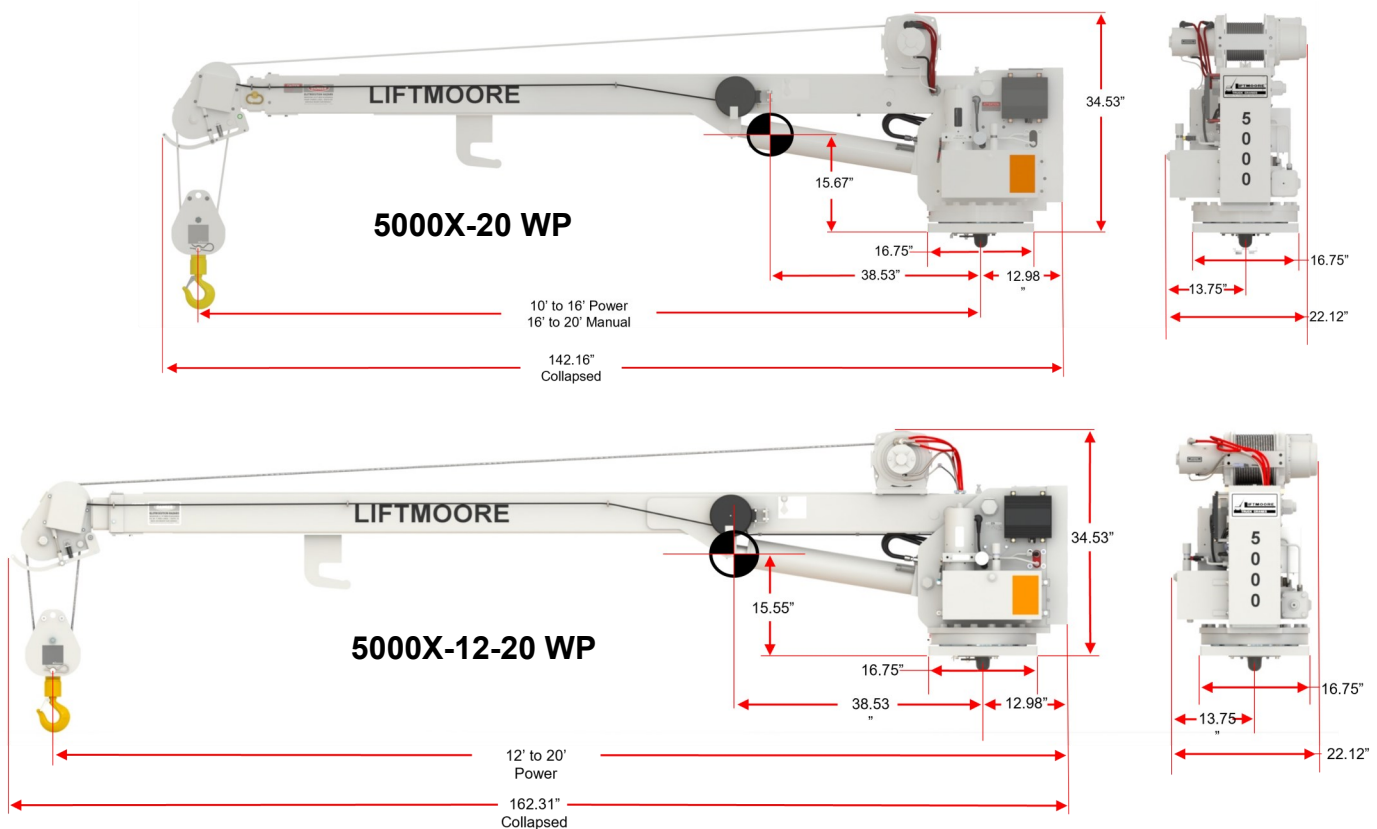
- 2 self-leveling LED lights
- 16 LEDs and 2,100 lumens per light
- Wide flood beam pattern
- Powder coated aluminum housing
- Shatter proof polycarbonate lens
- Can be configured to activate when crane is powered on, or manually by use of switch at boom-tip

MOUNTING PLATE

- Mounting plates are for welding onto the truck body
- They are fabricated to fit under the crane matching the bolt pattern and cutouts needed

WP CONTROL OPTIONS

- Wireless Engine Controls
 - Engine control receiver that can be mounted in cab
 - Engine start / stop
 - Idle hi / low
 - Auxiliary on / off
- Chassis Stability Monitoring System
 - Reports the X and Y axis of chassis on the transmitter
 - Crane will enter CHASSIS TILTED mode if either the X or Y reaches or exceeds 6 degrees
 - CHASSIS TILTED mode limits the crane to 50% speed on all hydraulic functions and disables winch up, boom elevation down, and boom extension out
 - Crane will return to normal operation once the X and Y axis are both less than 6 degrees

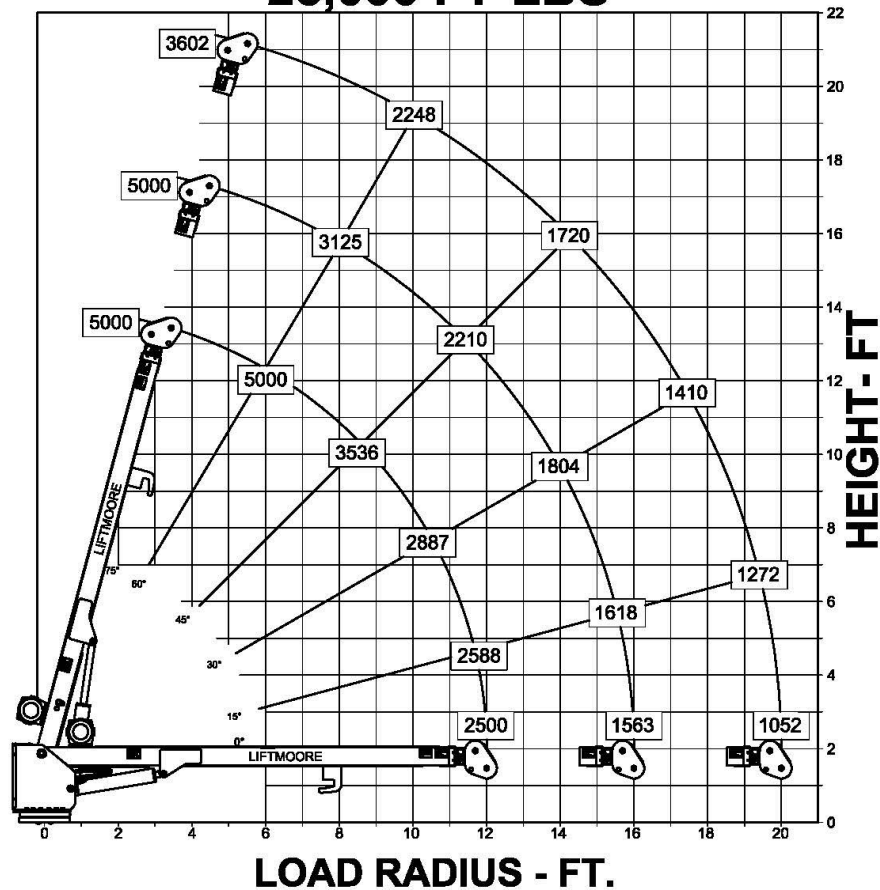




Since 1961

Quality, Craftsmanship and Dependability

LOAD CAPACITY - LBS. 25,000 FT-LBS



NOTE: USE DOUBLE LINE FOR LOADS ABOVE 2500 POUNDS

Liftmoore Inc.
7810 Pinemont Dr.
Houston, TX 77040
Phone: (713) 688-5533
Fax: (800) 824-5559 (USA & CANADA)
salesdesk@liftmoore.com



www.liftmoore.com

