



# LIFTMOORE CRANE 2010REE

12V ELECTRIC POWERED CRANE  
10,000 FT.-LB. MAX MOMENT RATING  
2,000 LB. MAX CAPACITY

- Wired Pendant Control
- Available with Wireless Proportional Controls, Wi-Fi Diagnostics, and Histogram
- Unlimited Rotation
- Power Boom Extension from 7ft to 11ft, with Manual Pull-out from 11ft to 15ft

ANTI TWO-BLOCK

1/4" GAC WIRE ROPE

TRAVEL BLOCK WITH  
SWIVEL HOOK AND  
SAFETY LATCH

FULL POWER BOOM EXTENSION

BOOM MOUNTED  
PLANETARY GEAR WINCH

POWER BOOM  
ELEVATION

WP CONTROL SYSTEM  
WITH ONBOARD WIFI  
DIAGNOSTICS AND  
HISTOGRAM

WORM GEAR  
ROTATION ON GEAR  
BEARING SLEWING RING

WIRELESS  
PROPORTIONAL  
CONTROLS



# LIFTMOORE CRANE 2010REE WP

## SPECIFICATIONS

---

### COMPLIANCE

The Model 2010REE is designed, tested, and manufactured in accordance with ASME B30.5 and OSHA 1910.180 requirements.

The final stage manufacturer is responsible for performing a stability test on the completed truck package.

### MAX CAPACITY

2,000 LBS.

### MAX MOMENT RATING

10,000 FT.-LBS.

### HOIST WINCH

The hoist winch is a planetary gear design with a 2,000 LBS. single line, first layer capacity. Ratio between winch drum and wire rope meets ANSI B30.5 requirements. The winch is powered by a 12-volt DC permanent magnet electric motor. First layer, no load line speed is 14.7 FPM.

### WIRE ROPE AND SHEAVES

The crane is supplied with 50 Ft. of 1/4" galvanized aircraft cable. Breaking strength of the wire rope is 7,000 Lbs, meeting ANSI requirements. The wire rope is outside of the boom and visible for the operator's continual inspection. All sheaves are non-metallic material for improved life of both the sheave and the wire rope. All sheaves meet ANSI requirements.

### CONTROLS

#### Wireless Proportional Controls

Wireless proportional control with onboard WIFI diagnostics and histogram is standard equipment for this unit. The transmitter provides directional control of the crane as well as a trigger for speed control. The transmitter features a display providing the operator with real time information such as: transmitter battery status, signal strength, system voltage, available load as a percentage of capacity, active error codes, and the X / Y axis of the chassis if equipped with the optional chassis stability monitoring system. When connected, the included 25 Ft. C.A.N. cable powers the transmitter, charges the transmitter batteries, and bypasses the wireless function. This allows the transmitter to control the crane in areas where wireless transmission is compromised. The control includes a rechargeable battery system. A 12-volt power point charger is included. Optional engine controls and chassis stability monitoring system are available.

#### Wired Pendant Control

2010REE model cranes are available with a 25 Ft. wired pendant control. Pendant control functions are on/off only, and do not offer proportional speed control on the wired pendant.

### WIFI DIAGNOSTICS AND HISTOGRAM

The control system contains a WIFI feature that can be accessed with any device that has WIFI and a web browser, such as a smart phone, tablet, or laptop. Once connected to the control's WIFI, a static IP address is used to access the Liftmoore page. Available features include crane diagnostics and a histogram.

### POWER SOURCE

2010REE model cranes require a protected, dedicated electrical circuit capable of providing a consistent 12-volt DC power source with sufficient amperage while operating under load. For optimum performance, a dedicated Group 31 or larger deep cycle battery installed near the crane is advised. A master disconnect switch, two circuit breakers, 30 Ft. of battery cable, and 3 Ft. of ground cable are included for standard truck installation.

### ROTATION SYSTEM

Unlimited rotation is provided by a low speed, high torque hydraulic motor driving a 36:1 ratio self-locking worm gear that rotates the crane on two tapered roller bearings. An electric swivel assembly enables the cranes unlimited and continuous rotation while connecting the power wire directly to the crane.

### BOOM ELEVATION

The boom is capable of operating from -5 to +75 degrees. A double acting cylinder elevates the boom. The cylinder has an integral counterbalance valve and pilot operated check valve.

The counterbalance valve provides two safety purposes. It will hold the load in the event of a hose failure, and also functions as a relief valve when an overload condition is induced on the crane while controlling the rate of descent of the boom. The cylinder rod is chrome plated and seals in the cylinder are of U-Cup design for best load holding capability.

### BOOM EXTENSION

A single hydraulic cylinder mounted inside the boom, extends the boom, under hydraulic power, from 7 Ft. to 11 Ft. and features a 4 Ft. manual pull-out from 11 Ft. to 15 Ft. The extension cylinder is equipped with an integral counterbalance valve and a pilot operated check valve. The counterbalance valve holds the cylinder in the event of hose failure, controls the rate of cylinder retraction, and acts as a relief valve in the event a pressure overload occurs. The pilot operated check valve prevents the boom from extending due to system back pressure.

### OVERLOAD PROTECTION

A transducer is included as standard equipment. The transducer is set up to limit overloads when using hoist up, boom extend out and boom down. Boom up is limited by the system's hydraulic pressure setting.

### ANTI-TWO BLOCK

The 2010REE includes an anti-two block feature that prevents contact between the boom tip and traveling block which could result in damaging or breaking the wire rope.

### MOUNTING

Four 1/2" x 2.50" grade 8 hex head bolts are included for mounting. Base plate is 14" x 14". Bolt pattern is 12" x 12".

### BOOM REST

A boom rest is required to support the crane's boom while the vehicle is in motion. The boom rest can be purchased as an option from Liftmoore, Inc.

### OUTRIGGER

Optional manual, manual and hydraulic, or full hydraulic outriggers are available from Liftmoore, Inc. Outriggers are necessary to keep the truck as level as possible protecting the crane's rotation mechanism and the truck's suspension.

# AVAILABLE OPTIONS

## 12K OUTRIGGER

- Manual curbside out and crank down, streetside fixed and no jack
- Manual curbside out and crank down, streetside out and crank down

## 25K OUTRIGGER

- Manual curbside out and hydraulic down, streetside manual out and hydraulic down
- Hydraulic curbside out and hydraulic down, streetside hydraulic out and hydraulic down

## BOOM RESTS

Available for the following mounting applications:

- Crane stowed horizontally
- Crane mounted on pedestal

## 12K PEDESTAL

- Variable height pedestal
- Height must be specified at time of order

## LED Boom-Tip Lights

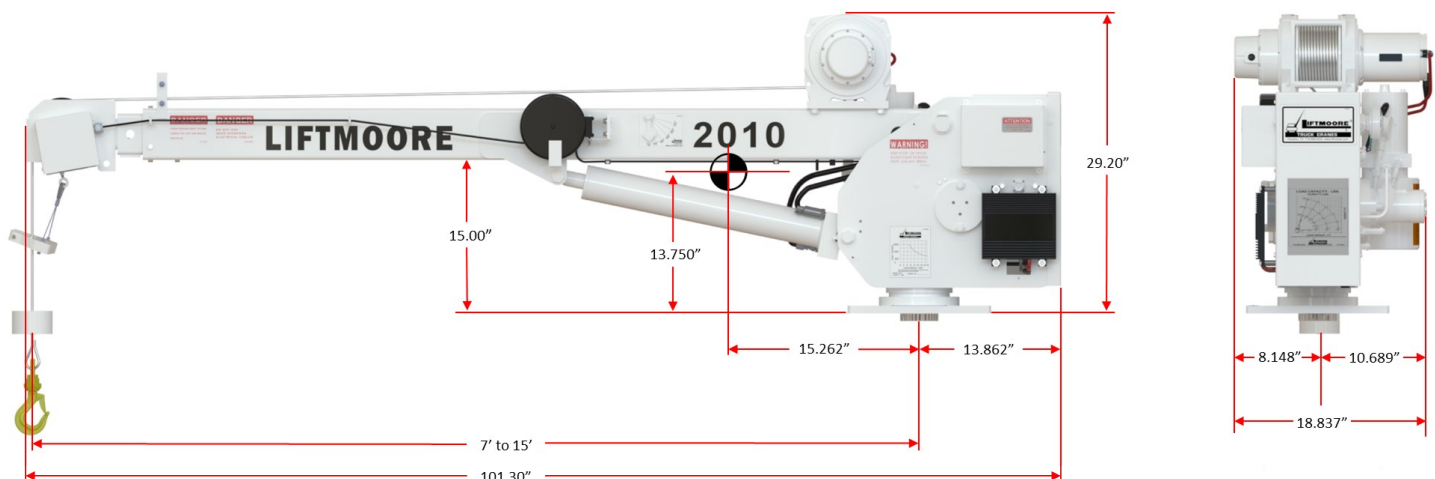
- 2 self-leveling LED lights
- 16 LEDs and 2,100 lumens per light
- Wide flood beam pattern
- Powder coated aluminum housing
- Shatter proof polycarbonate lens
- Can be configured to activate when crane is powered on, or manually by use of switch at boom-tip

## MOUNTING PLATE

- Mounting plates are for welding onto the truck body
- They are fabricated to fit under the crane matching the bolt pattern and cutouts needed

## WP CONTROL OPTIONS

- Wireless Engine Controls
  - Engine control receiver that can be mounted in cab
  - Engine start / stop
  - Idle hi / low
  - Auxiliary on / off
- Chassis Stability Monitoring System
  - Reports the X and Y axis of chassis on the transmitter
  - Crane will enter CHASSIS TILTED mode if either the X or Y reaches or exceeds 6 degrees
  - CHASSIS TILTED mode limits the crane to 50% speed on all functions and disables winch up, boom elevation down, and boom extension out
  - Crane will return to normal operation once the X and Y axis are both less than 6 degrees

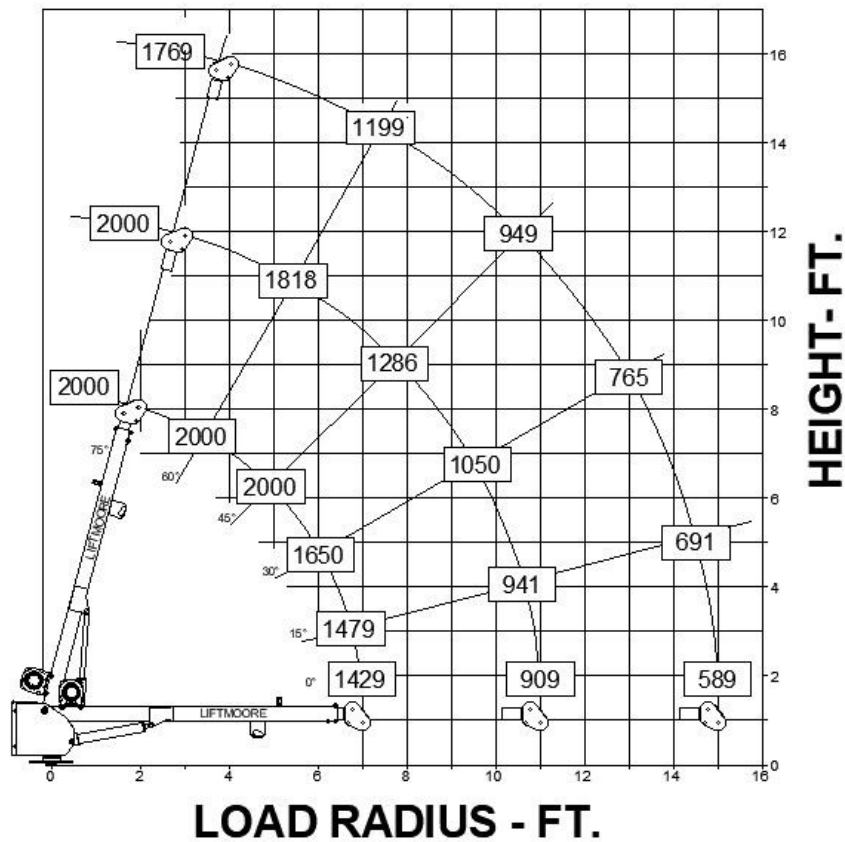




Since 1961  
Quality, Craftsmanship and Dependability



## LOAD CAPACITY - LBS. 10,000 FT-LBS



Load rating assumes winch operation on the first drum layer. Please check owner's manual for details.

Liftmoore Inc.  
7810 Pinemont Dr.  
Houston, TX 77040  
Phone: (713) 688-5533  
Fax: (800) 824-5559 (USA & CANADA)  
salesdesk@liftmoore.com



www.liftmoore.com

