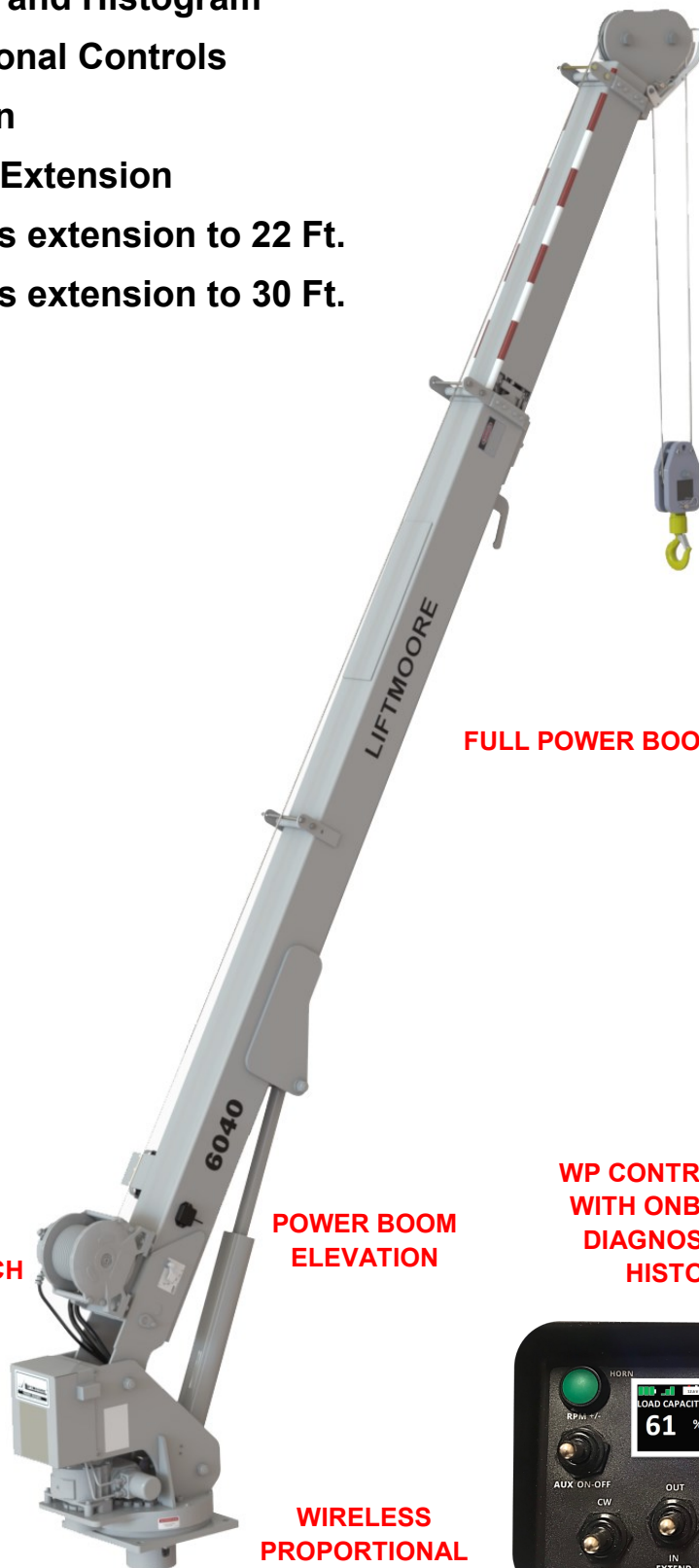




# LIFTMOORE CRANE 6040DX WP

HYDRAULIC POWERED CRANE  
40,000 FT.-LB. MAX MOMENT RATING  
6,000 LB. MAX CAPACITY

- Wi-Fi Diagnostics and Histogram
- Wireless Proportional Controls
- Unlimited Rotation
- Full Power Boom Extension
- 6040DX-22 WP has extension to 22 Ft.
- 6040DX-30 WP has extension to 30 Ft.



ANTI TWO-BLOCK

5/16" WIRE ROPE

TRAVEL BLOCK WITH  
SWIVEL HOOK AND  
SAFETY LATCH

FULL POWER BOOM EXTENSION

BOOM MOUNTED  
PLANETARY GEAR WINCH

POWER BOOM  
ELEVATION

WORM GEAR  
ROTATION ON GEAR  
BEARING SLEWING RING

WIRELESS  
PROPORTIONAL  
CONTROLS

WP CONTROL SYSTEM  
WITH ONBOARD WIFI  
DIAGNOSTICS AND  
HISTOGRAM



# LIFTMOORE CRANE 6040DX WP

## SPECIFICATIONS

---

### COMPLIANCE

The Model 6040DX is designed, tested, and manufactured in accordance with ASME B30.5 and OSHA 1910.180 requirements.

The final stage manufacturer is responsible for performing a stability test on the completed truck package.

### MAX CAPACITY

6,000 LBS.

### MAX MOMENT RATING

40,000 FT.-LBS.

### HOIST WINCH

The hoist winch is a planetary gear design with a 3,000 LBS. single line, first layer capacity. Ratio between winch drum and wire rope meets ANSI requirements. A low speed, high torque hydraulic motor powers the winch. First layer, no load line speed is 56 FPM at 8 GPM. Operation of the internal negative static multi disc brake is automatic.

### WIRE ROPE AND SHEAVES

The crane is supplied with 5/16" galvanized aircraft cable. The 22 Ft. boom option (6040DX-22 WP) includes 95' of wire rope, and the 30 Ft. boom option (6040DX-30 WP) includes 115' of wire rope. Breaking strength of the wire rope is 10,540 Lbs. meeting ANSI requirements. The wire rope is outside of the boom and visible for the operator's continual inspection. A traveling block is supplied for use either single or double line. A roller thrust bearing in the swivel hook provides easy rotation under load. All sheaves are non-metallic material for improved life of both the sheave and the wire rope. All sheaves meet ANSI requirements.

### CONTROLS

Wireless proportional controls with onboard WIFI diagnostics and histogram is standard equipment for this unit. The transmitter provides directional control of the crane as well as a trigger for speed control. The transmitter features a display providing the operator with real time information such as: transmitter battery status, signal strength, system voltage, available load as a percentage of capacity, active error codes, and the X / Y axis of the chassis if equipped with the optional chassis stability monitoring system. When connected, the included 25 Ft. C.A.N. cable powers the transmitter, charges the transmitter batteries, and bypasses the wireless function. This allows the transmitter to control the crane in areas where wireless transmission is compromised. The control includes a rechargeable battery system. A 12V power point charger is included. Optional engine controls and chassis stability monitoring system are available.

### WIFI DIAGNOSTICS AND HISTOGRAM

The control system contains a WIFI feature that can be accessed with any device that has WIFI and a web browser, such as a smart phone, tablet, or laptop. Once connected to the control's WIFI, a static IP address is used to access the Liftmoore page. Available features include crane diagnostics and a histogram.

### HYDRAULIC SYSTEM

All crane functions are hydraulically powered by an externally (engine) driven hydraulic pump. PTO, pump, reservoir and hoses are not supplied with the crane. Flow and pressure requirements are 8 GPM at 2,750 PSI. A proportional hydraulic valve in the manifold controls the crane's speed. All directional control valves are incorporated in a single series manifold, allowing use of multiple functions simultaneously. A pressure compensated flow control system is used. With this system, excess flow is dumped at the pressure required by the operating function. Heat buildup in the oil is kept to a minimum with this system.

### ROTATION SYSTEM

Unlimited rotation is provided on a ball slewing ring type bearing with an external gear driven by a worm gearbox. The worm gearbox is driven by a low speed, high torque hydraulic motor. A bronze worm gear is used in the gearbox for the smoothest operation. A dual-pole electric and hydraulic swivel enables unlimited rotation while connecting hydraulics as well as positive and negative wires directly to the crane.

### BOOM ELEVATION

The boom is capable of operating from -5 to +75 degrees. A double acting cylinder elevates the boom. The cylinder has an integral counterbalance valve. The counterbalance valve provides two safety purposes. It will hold the load in the event of a hose failure, and also functions as a relief valve when an overload condition is induced on the crane while controlling the rate of descent of the boom. The cylinder rod is chrome plated and seals in the cylinder are of U-Cup design for best possible load holding capability.

### BOOM EXTENSION

The boom extends hydraulically from 10 to 22 feet on the 22 foot boom model, or 13 to 30 feet on the 30 foot boom model. Two hydraulic cylinders with an integral counterbalance valve extend the boom.

### OVERLOAD PROTECTION

A transducer is included as standard equipment. The transducer is set up to limit overloads when using hoist up, boom extend out and boom down. Boom up is limited by the system's hydraulic pressure setting.

### ANTI-TWO BLOCK

The 6040DX includes an anti-two block feature that prevents contact between the boom tip and traveling block which could result in damaging or breaking the wire rope.

### MOUNTING

Four 7/8" grade 8 hex head bolts are required for mounting. Base plate is 17.5 x 17.5". Bolt pattern is 14.75" x 14.75". Mounting bolts are not included.

### BOOM REST

A boom rest is required to support the crane's boom while the vehicle is in motion. The boom rest can be purchased as an option from Liftmoore, Inc.

### OUTRIGGER

An optional manual or hydraulic outrigger is available from Liftmoore, Inc. Outriggers are necessary to keep the truck as level as possible protecting the crane's rotation mechanism and the truck's suspension.

# AVAILABLE OPTIONS

## 40K OUTRIGGER

- Hydraulic curbside out and down, streetside fixed and hydraulic down
- Hydraulic curbside out and down, hydraulic streetside out and down
- Manual curbside out and crank down, streetside fixed and crank down

## BOOM RESTS

Available for the following mounting applications:

- Crane stowed horizontally
- Crane stowed elevated above horizontal
- Crane mounted on pedestal

## 40K PEDESTAL

- Variable height pedestal
- Height must be specified at time of order

## LED Boom-Tip Lights

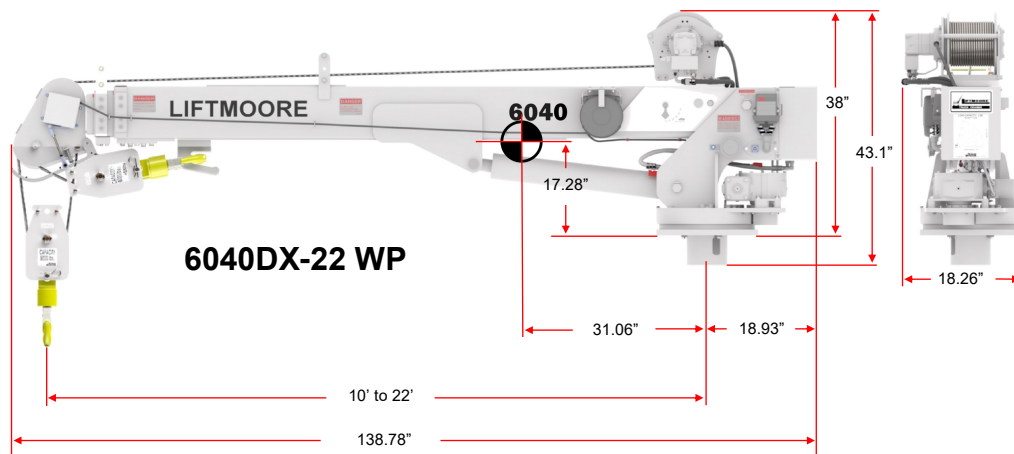
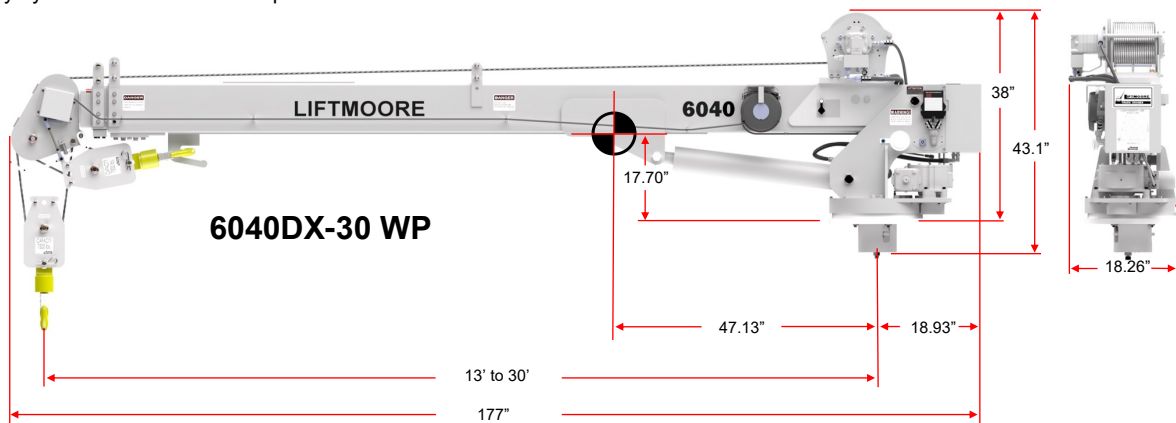
- 2 self-leveling LED lights
- 16 LEDs and 2,100 lumens per light
- Wide flood beam pattern
- Powder coated aluminum housing
- Shatter proof polycarbonate lens
- Can be configured to activate when crane is powered on, or manually by use of switch at boom-tip

## MOUNTING PLATE

- Mounting plates are for welding onto the truck body
- They are fabricated to fit under the crane matching the bolt pattern and cutouts needed

## WP CONTROL OPTIONS

- Wireless Engine Controls
  - Engine control receiver that can be mounted in cab
  - Engine start / stop
  - Idle hi / low
  - Auxiliary on / off
- Chassis Stability Monitoring System
  - Reports the X and Y axis of chassis on the transmitter
  - Crane will enter CHASSIS TILTED mode if either the X or Y reaches or exceeds 6 degrees
  - CHASSIS TILTED mode limits the crane to 50% speed on all functions and disables winch up, boom elevation down, and boom extension out
  - Crane will return to normal operation once the X and Y axis are both less than 6 degrees



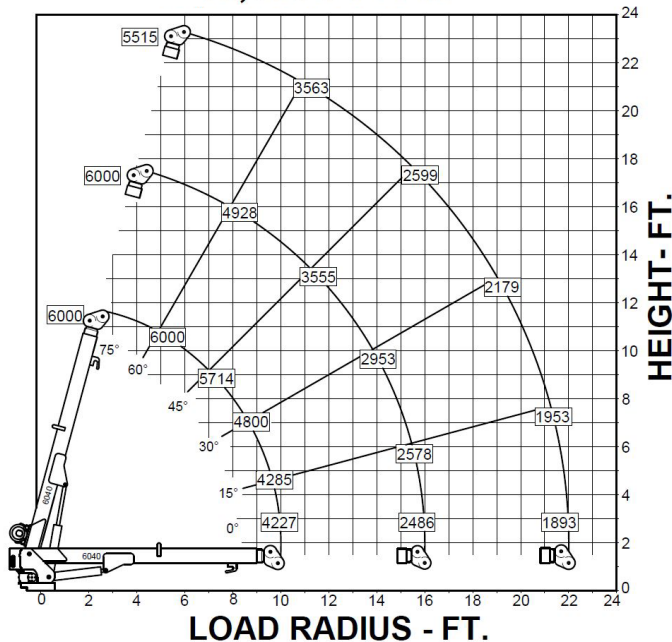


Since 1961  
Quality, Craftsmanship and Dependability



## 6040DX-22 WP

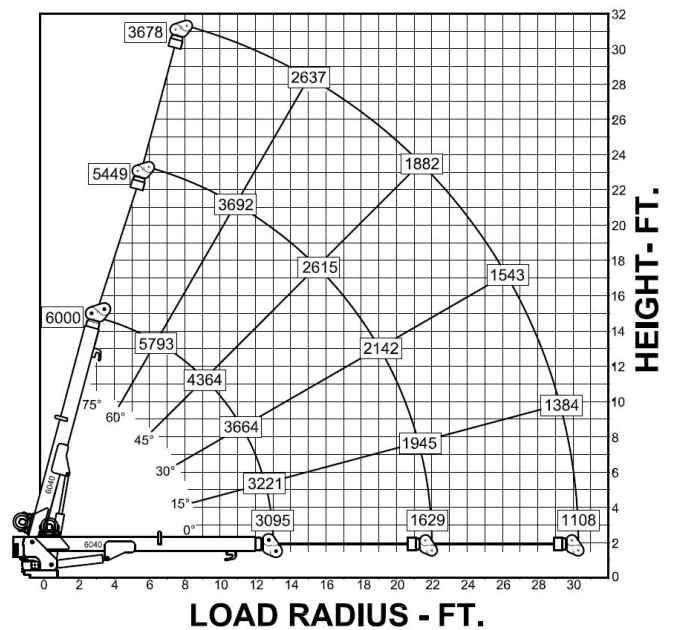
LOAD CAPACITY - LBS.  
40,000 FT-LBS



NOTE: USE DOUBLE LINE FOR LOADS ABOVE 3000 POUNDS

## 6040DX-30 WP

LOAD CAPACITY - LBS.  
40,000 FT-LBS



NOTE: USE DOUBLE LINE FOR LOADS ABOVE 3200 POUNDS

Liftmoore Inc.  
7810 Pinemont Dr.  
Houston, TX 77040  
Phone: (713) 688-5533  
Fax: (800) 824-5559 (USA & CANADA)  
salesdesk@liftmoore.com



www.liftmoore.com

