

# Liftmoore, Inc.

## PRODUCT LIST

Effective July 23, 2022

**This list is comprised of our Standard Units only  
Contact Liftmoore for Special Applications & Boom Lengths**

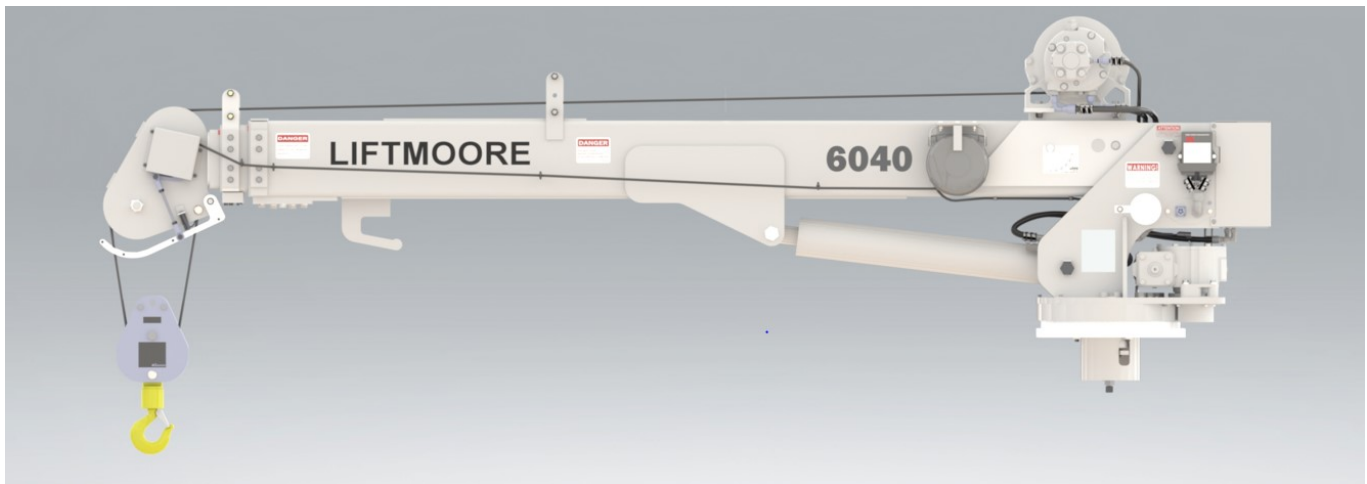
Since our founding in 1961, of the more than 50,000 cranes we have built, a number of models are no longer considered current production. Please contact Liftmoore for the equivalent new models or convey your requirements for older models.

### **Changes and improvements from last year's product listing include:**

Model 6040DX WP now replaces the 4064DXP with 22 and 30 foot boom configurations.

This is a hydraulic crane with wireless proportional controls and WIFI diagnostics  
6,000 Lb. maximum weight capacity with a 40,000 Ft.-Lb. maximum moment rating  
More information on the 6040DX-22 WP can be found on pages 48—49.

Due to component obsolescence, Models 1032, 1640, 2550X-20, 3660, and 5080  
will no longer be offered with the wireless control option.



Visit our website at [www.liftmoore.com](http://www.liftmoore.com) for specifications  
on the complete Liftmoore line of cranes, bodies, and accessories.

# TABLE OF CONTENTS

Discounts & Terms	Page 3
Liftmoore Warranty	Page 4
Notes	Page 5
<b>12V DC Powered Electric Cranes</b>	
L-8	Page 6-7
L-21-7	Page 8-9
L-21W-7	Page 10-11
2000	Page 12-13
206REL	Page 14-15
206REL W	Page 16-17
LA6K	Page 18-19
LA10K	Page 20-21
2700AR-14	Page 22-23
2010REL-15	Page 24-25
2010REE-15 / WP	Page 26-27
3200REE-15	Page 28-29
3612REL-15	Page 30-31
3612REE-15 / WP	Page 32-33
3612X 9-15 / WP	Page 34-35
4000X-16 / WP	Page 36-37
4000X-20 / WP	Page 38-39
5000X-20 / WP	Page 40-41
5000X 12-20 / WP	Page 42-43
6036X-20 / WP	Page 44-45

<b>Hydraulic Powered Cranes</b>	
<b>Full Power Boom Extension</b>	
<b>Wireless Control</b>	
<b>Planetary Gear Winch</b>	
2550XP 12-20	Page 46-47
6040DX WP	Page 48-49
8045DX WP	Page 50-51
60100DX WP	Page 52-53
72100DX WP	Page 54-55
<b>Legacy Hydraulic Powered Cranes</b>	
<b>Power and Manual Boom Extension</b>	
<b>Pendant Control only</b>	
1032XP	Page 56-57
1640XP	Page 58-59
2550XP Wormgear winch	Page 60-61
3660XP Wormgear winch	Page 62-63
5080XP Wormgear winch	Page 64-65
Boom Rests - Service Body and Flat Bed	Page 66-67
Jackstands	Page 68
Outrigger Description & Definition	Page 69
Outriggers - Rated to 12,000 Ft.-Lbs.	Page 70
Outriggers - Rated to 18,000 Ft.-Lbs.	Page 70
Outriggers - Rated to 25,000 Ft.-Lbs.	Page 71-72
Outriggers - Rated to 40,000 Ft.-Lbs.	Page 73
Outriggers - Rated to 45,000 Ft.-Lbs.	Page 74
Outriggers - Rated to 50,000 Ft.-Lbs.	Page 75
Outriggers - Rated to 72,000 Ft.-Lbs.	Page 76
Pedestals	Page 77
Mounting Plates	Page 78
Recommended Electric Components	Page 78
Recommended Hydraulic Components	Page 79
LED Boom Tip Light for Existing Cranes	Page 79
Service Tools	Page 80
<b>WP Control System</b>	<b>Page 81-82</b>

## DISCOUNTS AND TERMS

Liftmoore warrants its products for twelve (12) months from date of shipment as defined in its Limited Warranty.

A copy of the warranty is on the next page.

**All specifications are subject to correction due to typographical errors.**

# LIFTMOORE LIMITED WARRANTY

## Parts and Structural

Liftmoore, Inc. warrants each LIFTMOORE crane to be free from defects in materials and workmanship for twelve (12) months from the date of delivery to the original customer. Under the terms of this warranty the crane structural components manufactured by LIFTMOORE, Inc. are warranted for thirty-six (36) months from the date of delivery to the original customer. LIFTMOORE, Inc. will repair or replace, as its sole discretion, any equipment or part that is returned F.O.B. to LIFTMOORE, Inc.'s plant at 7810 Pinemont Drive, Houston, Texas 77040, or to one of its authorized dealers, and is found by LIFTMOORE, Inc. or its authorized dealer to have been defective at the time of original delivery.

The foregoing warranty is the exclusive warranty made by LIFTMOORE, Inc. with respect to its cranes and is in lieu of all other warranties. ANY AND ALL OTHER WARRANTIES, EXPRESS OR IMPLIED, INCLUDING ANY WARRANTY OF MERCHANTABILITY OR FITNESS OF ANY CRANE FOR A PARTICULAR PURPOSE OR OPERATION, ARE HERBY EXPRESSLY DISCLAIMED.

The foregoing warranty applies only to LIFTMOORE cranes under normal use and service and does not apply in the event of damage caused by repair or alteration or damage during shipment, accident, negligence, overloading, or misuse, including operator's failure to follow any of the instructions issued with the crane.

This warranty is limited to the original purchaser and is not assignable. In order to submit a claim, the original purchaser must provide a copy of the original invoice for the crane in question within twelve (12) months following the delivery date and within 30 days from the date of repair.

The warranty applies only when the LIFTMOORE crane is used for commercial purposes and does not cover any purchase for use for personal, family or household purposes.

**LIMITATION OF LIABILITY:** LIFTMOORE, Inc.'s liability for any losses or damages resulting from any cause whatsoever, including LIFTMOORE, Inc.'s NEGLIGENCE or from a defective crane irrespective of whether such defects are discoverable or latent, shall in no event exceed the purchase price of the crane to which losses or damages are claimed, or at the election of LIFTMOORE, Inc., the repair or replacement of the defective crane.

In no event shall LIFTMOORE, Inc. be liable for any special, incidental, or consequential damages, including commercial losses or costs of any kind sustained by purchaser or any other person or for any damages for which purchaser may be liable to other persons by reason of any defect in any LIFTMOORE crane or any part thereof.

LIFTMOORE, Inc. reserves the right to make changes in design or construction of its cranes at any time without obligating itself to make such changes on cranes previously manufactured.

No agent, employee, or representative of LIFTMOORE, Inc. has authority to amend or modify the foregoing warranty or to bind LIFTMOORE, Inc. by any other warranty, guaranty, or assumption of liability.

In the event any provision of this warranty is for any reason held ineffective, the remaining provisions shall remain in force and effect.

Some states do not allow limitations on how long an implied warranty lasts or the exclusion or limitation of incidental or consequential damages, so the above limitations and exclusions may not apply to you. This warranty gives you specific legal rights, and you may also have other legal rights that vary from state to state.

[illegible]

## **12V D.C. POWERED ELECTRIC CRANES**

### **MODEL L-8**

#### **SPECIFICATIONS**

Moment Rating: 4,500 Ft.-Lbs.

Maximum Capacity: 800 Lbs. at all load radii

Winch: Planetary gears with permanent magnet motor

Control System: On/Off 12V electric controls

Control Type: Remote pendant control, 12.5 Ft., removable

Wire Rope: Galvanized Aircraft Cable, 3/16 In. x 25 Ft., 4,200 Lb. breaking strength

Down haul pickle weight

Rotation: Manual 360 degree - tapered roller bearings for ease of movement with a manual band brake to control swing

Boom Elevation: Manual, four positions ranging from 0 Degrees to 75 Degrees

Boom stows vertically for travel

Boom Extension: Manual from 3.8 Ft. to 5.75 Ft.

Mounting plate is 12 In. square with a 9.5 In. square bolt pattern

**NOTE: ATB not offered on this model**

#### **INCLUDED**

Battery power cable #4 X 25 Ft. with quick disconnect mecon

Circuit breaker, 150 Amp

Ground Cable #4 x 3 Ft. for grounding the factory battery to the truck frame

Mounting Bolts Grade 8: 0.50 In. x 2.75 In. (qty. 4)

Recommended installation instructions and owner's manual

#### **REQUIRED (NOT INCLUDED)**

Protected, dedicated electrical circuit providing consistent 12V DC power source with sufficient amperage while operating under load.

Installer must assure the vehicle can maintain an appropriately level condition when the crane is in use.

#### **RECOMMENDED**

For optimum performance, a dedicated Group 24 deep cycle battery installed near the crane is advised.

Jackstand, to provide stability and an appropriately level condition

## 12V D.C. POWERED ELECTRIC CRANES MODEL L-8

### Crane Pricing and Recommended Options / Accessories

**ITEM NO.**

**CRANE OPTIONS**

**39005**

LIFTMOORE CRANE L-8

Standard pedestal height = 47.3 In.

Custom pedestal heights available if needed, specify height when ordering

WEIGHT: Shipping 305 Lbs. / Actual 240 Lbs.

**39044**

LIFTMOORE CRANE L-8S

Short pedestal for mounting on service body compartment top

Boom does not fold vertically for travel with short pedestal

WEIGHT: Shipping 395 Lbs. / Actual 158 Lbs.

**RECOMMENDED ACCESSORIES**

MOUNTING PLATE 30684 - See page 78

12K JACKSTAND - See page 68

CIRCUIT BREAKER KIT 29915 - See page 78

## **12V D.C. POWERED ELECTRIC CRANES**

### **MODEL L-21-7**

#### **SPECIFICATIONS**

Moment Rating: 6,000 Ft.-Lbs.

Maximum Capacity: 2,000 Lbs. at 3 Ft. load radius

Winch: Planetary gears with permanent magnet motor

Control System: On/Off 12V electric controls

Control Type: Remote pendant control, 12.5 Ft., removable

Wire Rope: Galvanized Aircraft Cable, 3/16 In. x 25 Ft., 4,200 Lb. breaking strength

Travel Block: For easy two-part line hook up, includes swivel safety hook

Rotation: Manual 360 degree - tapered roller bearings for ease of movement with a manual band brake to control swing

Boom Elevation: Manual, two positions at 20 Degrees and 45 Degrees

Boom stows vertically for travel

Boom Extension: Manual, two positions from 3.3 Ft. to 5 Ft. to 7.3 Ft.

ATB system included for cranes used in construction as per OSHA 1926.1441(d)(2) and OSHA 1926.1416(d)(3), available option to remove ATB

Mounting plate is 12 In. square with a 9.5 In. square bolt pattern

#### **INCLUDED**

Battery power cable #4 X 25 Ft. with quick disconnect mecon

Circuit breaker, 150 Amp

Ground Cable #4 x 3 Ft. for grounding the factory battery to the truck frame

Mounting Bolts Grade 8: 0.50 In. x 2.5 In. (qty. 4)

Recommended installation instructions and owner's manual

#### **REQUIRED (NOT INCLUDED)**

Protected, dedicated electrical circuit providing consistent 12V DC power source with sufficient amperage while operating under load

Installer must assure the vehicle can maintain an appropriately level condition when the crane is in use

#### **RECOMMENDED**

For optimum performance, a dedicated Group 24 deep cycle battery installed near the crane is advised

Jackstand, to provide stability and an appropriately level condition



## 12V D.C. POWERED ELECTRIC CRANES MODEL L-21-7

### Crane Pricing and Recommended Options / Accessories

**ITEM NO.**

**CRANE OPTIONS**

**39379**

LIFTMOORE CRANE L-21-7 ATB

Standard pedestal height = 42.625 In.

Custom pedestal heights available if needed, specify height when ordering

WEIGHT: Shipping 450 Lbs. / Actual 300 Lbs.

**OPTION**

Remove ATB on L-21-7 (38995)

**39378**

LIFTMOORE CRANE L-21S-7 ATB

Short pedestal for mounting on service body compartment top

Boom does not fold vertically for travel with short pedestal

WEIGHT: Shipping 330 Lbs. / Actual 231 Lbs.

**OPTION**

Remove ATB on L-21S-7 (38991)

**38994**

LIFTMOORE CRANE L-21

Standard pedestal height = 42.625 In.

Custom pedestal heights available if needed, specify height when ordering

Boom length 3 Ft. to 5 Ft., manually extended

ATB not offered on model L-21

Weight: Shipping 450 Lbs. \ Actual 265 Lbs.

**RECOMMENDED ACCESSORIES**

MOUNTING PLATE 30684 - See page 78

12K JACKSTAND - See page 68

CIRCUIT BREAKER KIT 29915 - See page 78

## **12V D.C. POWERED ELECTRIC CRANES MODEL L-21W-7**

### **SPECIFICATIONS**

Moment Rating: 6,000 Ft.-Lbs.

Maximum Capacity: 2,000 Lbs. at 3 Ft. load radius

Winch: Planetary gears with 2.4 HP permanent magnet motor, 2,000 Lbs. single line capacity

Control System: On/Off 12V electric controls

Control Type: Remote pendant control, 12.5 Ft., removable

Wire Rope: Galvanized Aircraft Cable, 1/4 In. x 62 Ft. with swivel safety hook  
7,000 Lb. breaking strength

Down haul pickle weight

Rotation: Manual 360 degree - tapered roller bearings for ease of movement with a manual band brake to control swing

Boom Elevation: Manual, two positions at 20 Degrees and 45 Degrees

Boom stows vertically for travel

Boom Extension: Manual, two positions from 3 Ft. to 5 Ft. to 7 Ft.

ATB system included for cranes used in construction as per OSHA 1926.1441(d)(2) and OSHA 1926.1416(d)(3)

Mounting plate is 12 In. square with a 9.5 In. square bolt pattern

### **INCLUDED**

Battery power cable #4 X 25 Ft. with quick disconnect mecon

Circuit breaker, 150 Amp

Ground Cable #4 x 3 Ft. for grounding the factory battery to the truck frame

Mounting Bolts Grade 8: 0.50 In. x 2.75 In. (qty. 4)

Recommended installation instructions and owner's manual

### **REQUIRED (NOT INCLUDED)**

Protected, dedicated electrical circuit providing consistent 12V DC power source with sufficient amperage while operating under load

Installer must assure the vehicle can maintain an appropriately level condition when the crane is in use

### **RECOMMENDED**

For optimum performance, a dedicated Group 24 deep cycle battery installed near the crane is advised

Jackstand, to provide stability and an appropriately level condition

## 12V D.C. POWERED ELECTRIC CRANES MODEL L-21W-7

### Crane Pricing and Recommended Options / Accessories

**ITEM NO.**

**CRANE OPTIONS**

**39314**

LIFTMOORE CRANE L-21W-7 ATB

Standard pedestal height = 42.625 In.

Custom pedestal heights available if needed, specify height when ordering

WEIGHT: Shipping 520 Lbs. / Actual 325 Lbs.

**39391**

LIFTMOORE CRANE L-21WS-7 ATB

Short pedestal for mounting on service body compartment top

Boom does not fold for travel with short pedestal

WEIGHT: Shipping 525 Lbs. / Actual 318 Lbs.

**RECOMMENDED ACCESSORIES**

MOUNTING PLATE 30684 - See page 78

12K JACKSTAND - See page 68

CIRCUIT BREAKER KIT 29915 - See page 78

## **12V D.C. POWERED ELECTRIC CRANES MODEL 2000**

### **SPECIFICATIONS**

Moment Rating: 6,000 Ft.-Lbs.

Maximum Capacity: 2,000 Lbs. at 3 Ft. load radius

Winch: Planetary gears with 2.4 HP permanent magnet motor, 2,000 Lbs. single line capacity

Control System: On/Off 12V electric controls

Control Type: Remote pendant control, 12.5 Ft., removable

Wire Rope: Galvanized Aircraft Cable, 1/4 In. x 62 Ft. with swivel safety hook  
7,000 Lb. breaking strength

Down haul pickle weight

Rotation: Manual 360 degree - tapered roller bearings for ease of movement with a manual band brake to control swing

Boom Elevation: Manual, five positions

Boom Extension: Manual extension from 5.5 Ft. to 9 Ft.

Mounting plate is 15 In. square with a 12 In. square bolt pattern

**NOTE: ATB not offered on this model**

### **INCLUDED**

Battery power cable #4 X 25 Ft. with quick disconnect mecon

Circuit breaker, 150 Amp

Ground Cable #4 x 3 Ft. for grounding the factory battery to the truck frame

Mounting Bolts Grade 8: 0.50 In. x 3.00 In. (qty. 4)

Recommended installation instructions and owner's manual

### **REQUIRED (NOT INCLUDED)**

Protected, dedicated electrical circuit providing consistent 12V DC power source with sufficient amperage while operating under load

Installer must assure the vehicle can maintain an appropriately level condition when the crane is in use

Boom rest or provision to prevent crane from rotating when the vehicle is in motion

### **RECOMMENDED**

For optimum performance, a dedicated Group 24 deep cycle battery installed near the crane is advised

Jackstand to provide stability and an appropriately level condition

## 12V D.C. POWERED ELECTRIC CRANES MODEL 2000

### Crane Pricing and Recommended Options / Accessories

**ITEM NO.**

**CRANE OPTIONS**

**39070**

LIFTMOORE CRANE 2000

Boom Length 5.5 Ft. to 9 Ft. manually extended

No ATB offered for Model 2000

WEIGHT: Shipping 450 Lbs. / Actual 385 Lbs.

**RECOMMENDED ACCESSORIES**

BOOM REST 22167 - See page 66 and 67

12K JACKSTAND - See page 68

CIRCUIT BREAKER KIT 29915 - See page 78

## **12V D.C. POWERED ELECTRIC CRANES MODEL 206REL**

### **SPECIFICATIONS**

Moment Rating: 6,500 Ft.-Lbs.

Maximum Capacity: 2,000 Lbs. at 3.25 Ft. load radius

Winch: Planetary gears with permanent magnet motor

Control System: On/Off 12V electric controls

Control Type: Remote pendant control, 18 Ft., removable

Wire Rope: Galvanized Aircraft Cable 3/16 In. x 35 Ft. with 4,200 Lb. breaking strength

Travel Block: For easy two-part line hook up, includes swivel safety hook

Rotation: Full power, unlimited on ball bearing slewing ring with electric swivel

Boom Elevation: Full power from 0 Degrees to 75 Degrees

Boom Extension: Manual extension from 5.5 Ft. to 9 Ft.

Counterbalance (holding) valve integrated in elevation cylinder

Overload protection system

ATB system included for cranes used in construction as per OSHA 1926.1441(d)(2)  
and OSHA 1926.1416(d)(3)

Mounting plate is 12 In. square with a 9.5 In. square bolt pattern

### **INCLUDED**

Battery power cable #4 X 25 Ft. with quick disconnect mecon

Circuit breaker, 150 Amp

Ground Cable #4 x 3 Ft. for grounding the factory battery to the truck frame

Master disconnect switch and bracket

Mounting Bolts Grade 8: 0.50 In. x 3.00 In. (qty. 4)

Recommended installation instructions and owner's manual

### **REQUIRED (NOT INCLUDED)**

Protected, dedicated electrical circuit providing consistent 12V DC power source with sufficient amperage while operating under load

Installer must assure the vehicle can maintain an appropriately level condition when the crane is in use

Boom rest or provision to prevent crane from rotating when the vehicle is in motion

### **RECOMMENDED**

For optimum performance, a dedicated Group 31 deep cycle battery installed near the crane is advised

Jackstand to provide stability and an appropriately level condition

## 12V D.C. POWERED ELECTRIC CRANES MODEL 206REL

### Crane Pricing and Recommended Options / Accessories

#### ITEM NO.

#### CRANE OPTIONS

**39371**

LIFTMOORE CRANE 206REL ATB

Lower pedestal height = 22.75 In.

Custom pedestal heights available if needed, specify height when ordering

WEIGHT: Shipping 555 Lbs. / Actual 412 Lbs.

**OPTION**

Remove ATB on 206REL (39214)

NOTE: Add on wireless control 28492 is not available on cranes with ATB removed

**39372**

LIFTMOORE CRANE 206RELS ATB

Short pedestal for mounting on service body compartment top

WEIGHT: Shipping 520 Lbs. / Actual 383 Lbs.

**OPTION**

Remove ATB on 206RELS (39213)

NOTE: Add on wireless control 28492 is not available on cranes with ATB removed

**39373**

LIFTMOORE CRANE 206RELS ATB SP

Same crane as 39372 with 15 In. square base plate and 12 In. square bolt pattern

WEIGHT: Shipping 520 Lbs. / Actual 383 Lbs.

#### CONTROL OPTIONS FOR 39371, 39372, 39373

**28492**

MEGA wireless control add-on, works interchangeably with wired pendant control

#### LED BOOM TIP LIGHTS (INSTALLED)

**INST-2008**

INSTALL 29167 KIT, LIGHT LED E

Includes two self-leveling LED boom tip lights rated at 2,100 lumens each

#### RECOMMENDED ACCESSORIES

BOOM REST 27860 or 22158 - See page 66 and 67

12K JACKSTAND - See page 68

12K OUTRIGGER - See page 70

CIRCUIT BREAKER KIT 29915 - See page 78

## **12V D.C. POWERED ELECTRIC CRANES MODEL 206REL W**

### **SPECIFICATIONS**

Moment Rating: 6,500 Ft.-Lbs.

Maximum Capacity: 2,000 Lbs. at 3.25 Ft. load radius

Winch: Planetary gears with 2.4 HP permanent magnet motor,  
2,000 Lbs. single line capacity

Control System: On/Off 12V electric controls

Control Type: Remote pendant control, 18 Ft., removable

Wire Rope: Galvanized Aircraft Cable, 1/4 In. x 62 Ft. with swivel safety hook  
7,000 Lb. breaking strength

Down haul pickle weight

Rotation: Full power, unlimited on ball bearing slewing ring with electric swivel

Boom Elevation: Full power from 0 Degrees to 75 Degrees

Boom Extension: Manual extension from 5.5 Ft. to 9 Ft.

Counterbalance (holding) valve integrated in elevation cylinder

Overload protection system

ATB system included for cranes used in construction as per OSHA 1926.1441(d)(2)  
and OSHA 1926.1416(d)(3)

Mounting plate is 12 In. square with a 9.5 In. square bolt pattern

### **INCLUDED**

Battery power cable #4 X 25 Ft. with quick disconnect mecon

Circuit breaker, 150 Amp

Ground Cable #4 x 3 Ft. for grounding the factory battery to the truck frame

Master disconnect switch and bracket

Mounting Bolts Grade 8: 0.50 In. x 3.00 In. (qty. 4)

Recommended installation instructions and owner's manual

### **REQUIRED (NOT INCLUDED)**

Protected, dedicated electrical circuit providing consistent 12V DC power source with  
sufficient amperage while operating under load

Installer must assure the vehicle can maintain an appropriately level condition when the  
crane is in use

Boom rest or provision to prevent crane from rotating when the vehicle is in motion

### **RECOMMENDED**

For optimum performance, a dedicated Group 31 deep cycle battery installed near the  
crane is advised

Jackstand to provide stability and an appropriately level condition



## 12V D.C. POWERED ELECTRIC CRANES MODEL 206REL W

### Crane Pricing and Recommended Options / Accessories

**ITEM NO.**

**CRANE OPTIONS**

**39404**

LIFTMOORE CRANE 206RELW VH ATB

Lower pedestal height = 22.75 In.

Custom pedestal heights available if needed, specify height when ordering

WEIGHT: Shipping 570 Lbs. / Actual 468 Lbs.

**39309**

LIFTMOORE CRANE 206RELWS ATB

Short pedestal for mounting on service body compartment top

WEIGHT: Shipping 545 Lbs. / Actual 428 Lbs.

**LED BOOM TIP LIGHTS (INSTALLED)**

**INST-2008**

INSTALL 29167 KIT, LIGHT LED E

Includes two self-leveling LED boom tip lights rated at 2,100 lumens each

**RECOMMENDED ACCESSORIES**

BOOM REST 27860 or 22158 - See page 66 and 67

12K JACKSTAND - See page 68

12K OUTRIGGER - See page 70

CIRCUIT BREAKER KIT 29915 - See page 78

## **12V D.C. POWERED ELECTRIC CRANES MODEL LA6K**

### **SPECIFICATIONS**

Moment Rating: 6,500 Ft.-Lbs.

Maximum Capacity: 2,000 Lbs. at 3.3 Ft. load radius

Winch: Planetary gears with 2.4 HP permanent magnet motor, 2,000 Lbs. single line

Control System: 12V electric controls (see crane and control options)

Control Type: (see crane and control options)

Wire Rope: Galvanized Aircraft Cable, 7/32 In. x 40 Ft. with ball bearing swivel safety hook. Ball bearings allow hook to swivel under load

Down haul pickle weight

Rotation: Full power, unlimited on a ball bearing slewing ring with electric swivel

A low speed high torque hydraulic motor driving a worm type gear set

Boom Elevation: Full power from -90 Degrees to 70 Degrees

Boom Extension: Power from 5.5 Ft. to 8.5 Ft. and manual to 11.5 Ft.

Counterbalance (holding) valve integrated in both elevation and extension cylinders

Overload protection system

ATB system included for cranes used in construction as per OSHA 1926.1441(d)(2) and OSHA 1926.1416(d)(3)

Mounting plate is 12 In. square with a 9.5 In. square bolt pattern

### **INCLUDED**

Battery power cable #4 X 25 Ft. with quick disconnect mecon

Circuit breaker, 150 Amp

Ground Cable #4 x 3 Ft. for grounding the factory battery to the truck frame

Master disconnect switch and bracket

Mounting Bolts Grade 8: 0.50 In. x 2.50 In. (qty. 4)

Crane truck stability plate

Recommended installation instructions and owner's manual

### **REQUIRED (NOT INCLUDED)**

Protected, dedicated electrical circuit providing consistent 12V DC power source with sufficient amperage while operating under load

Installer must assure the vehicle can maintain an appropriately level condition when the crane is in use

Boom rest or provision to prevent crane from rotating when the vehicle is in motion

### **RECOMMENDED**

For optimum performance, a dedicated Group 31 deep cycle battery installed near the crane is advised

Jackstand or outrigger to provide stability and an appropriately level condition

## 12V D.C. POWERED ELECTRIC CRANES MODEL LA6K

### Crane Pricing and Recommended Options / Accessories

#### ITEM NO.

#### CRANE OPTIONS - WIRELESS PROPORTIONAL

**39491**

LIFTMOORE CRANE LA6K EX-11 WP

Proportional wireless controls with WIFI connectivity and diagnostics

Includes 25 Ft. CAN cable and 12V DC lighter port charger

WEIGHT: Shipping 820 Lbs. / Actual 690 Lbs.



#### CONTROL OPTIONS FOR 39491

Kit for remote control of truck engine from crane control. Features include engine start and stop, engage high idle, and additional control for auxiliary equipment

#### SPECIFY CHASSIS AT TIME OF ORDER - COMPONENT 28793

**INST-2009**

Kit for monitoring chassis stability

#### CRANE OPTIONS - ON/OFF PENDANT CONTROL

**39363**

LIFTMOORE CRANE LA6K EX-11 ATB

WEIGHT: Shipping 820 Lbs. / Actual 690 Lbs.

#### CONTROL OPTIONS FOR 39363

**28492**

MEGA wireless control add-on, works interchangeably with wired pendant control

#### RECOMMENDED ACCESSORIES

MOUNTING PLATE 30684 - See page 78

12K JACKSTAND - See page 68

12K OUTRIGGER - See page 70

CIRCUIT BREAKER KIT 29915 - See page 78

**NOTE: List price for On/Off crane with pendant control plus wireless option, is equal to the list price of the WP crane which comes standard with wireless proportional controls and WIFI diagnostics**

## **12V D.C. POWERED ELECTRIC CRANES**

### **MODEL LA10K**

#### **SPECIFICATIONS**

Moment Rating: 10,000 Ft.-Lbs.

Maximum Capacity: 2,000 Lbs. at 5 Ft. load radius

Winch: Planetary gears with 2.4 HP permanent magnet motor, 2,000 Lbs. single line

Control System: 12V electric controls (see crane and control options)

Control Type: (see crane and control options)

Wire Rope: Galvanized Aircraft Cable, 7/32 In. x 40 Ft. with ball bearing swivel safety hook. Ball bearings allow hook to swivel under load

Down haul pickle weight

Rotation: Full power, unlimited on a ball bearing slewing ring with electric swivel

A low speed high torque hydraulic motor driving a worm type gear set

Boom Elevation: Full power from -70 Degrees to 60 Degrees

Boom Extension: Power from 5.5 Ft. to 8.5 Ft. and manual to 11.5 Ft.

Counterbalance (holding) valve integrated in both elevation and extension cylinders

Overload protection system

ATB system included for cranes used in construction as per OSHA 1926.1441(d)(2) and OSHA 1926.1416(d)(3)

Mounting plate is 15 In. square with a 12 In. square bolt pattern

#### **INCLUDED**

Battery power cable #1 X 25 Ft. with quick disconnect mecon

Circuit breaker, 150 Amp

Ground Cable #4 x 3 Ft. for grounding the factory battery to the truck frame

Master disconnect switch and bracket

Mounting Bolts Grade 8: 0.50 In. x 2.50 In. (qty. 4)

Terminal lugs #1 GA 0.25 In. Dia. (qty. 2) and #1 GA 0.37 In. Dia. (qty. 2)

Crane truck stability plate, bubble level

Recommended installation instructions and owner's manual

#### **REQUIRED (NOT INCLUDED)**

Protected, dedicated electrical circuit providing consistent 12V DC power source with sufficient amperage while operating under load

Installer must assure the vehicle can maintain an appropriately level condition when the crane is in use

Boom rest or provision to prevent crane from rotating when the vehicle is in motion

#### **RECOMMENDED**

For optimum performance, a dedicated Group 31 deep cycle battery installed near the crane is advised

Jackstand or outrigger to provide stability and an appropriately level condition

## 12V D.C. POWERED ELECTRIC CRANES MODEL LA10K

### Crane Pricing and Recommended Options / Accessories

#### ITEM NO.

**39493**



#### CRANE OPTIONS - WIRELESS PROPORTIONAL

LIFTMOORE CRANE LA10K EX-11 WP

Proportional wireless controls with WIFI connectivity and diagnostics

Includes 25 Ft. CAN cable and 12V DC lighter port charger

WEIGHT: Shipping 895 Lbs. / Actual 805 Lbs.

#### CONTROL OPTIONS FOR 39493

Kit for remote control of truck engine from crane control. Features include engine start and stop, engage high idle, and additional control for auxiliary equipment

#### SPECIFY CHASSIS AT TIME OF ORDER - COMPONENT 28793

**INST-2009**

Kit for monitoring chassis stability

**39377**

#### CRANE OPTIONS - ON/OFF PENDANT CONTROL

LIFTMOORE CRANE LA10K EX-11 ATB

WEIGHT: Shipping 895 Lbs. / Actual 805 Lbs.

#### CONTROL OPTIONS FOR 39377

**28492**

MEGA wireless control add-on, works interchangeably with wired pendant control

#### RECOMMENDED ACCESSORIES

MOUNTING PLATE 30685 - See page 78

12K JACKSTAND - See page 68

12K OUTRIGGER - See page 70

CIRCUIT BREAKER KIT 29915 - See page 78

**NOTE: List price for On/Off crane with pendant control plus wireless option, is equal to the list price of the WP crane which comes standard with wireless proportional controls and WIFI diagnostics**

## **12V D.C. POWERED ELECTRIC CRANES MODEL 2700AR**

### **SPECIFICATIONS**

Moment Rating: 8,100 Ft.-Lbs.

Maximum Capacity: 2,700 Lbs. at 3 Ft. load radius

Winch: Planetary gears with 2.4 HP permanent magnet motor

Control System: On/Off 12V electric controls

Control Type: Remote pendant control, 18 Ft., removable with E-Stop and audible signal function

Wire Rope: Galvanized Aircraft Cable, 1/4 In. x 62 Ft. with 7,000 Lb. breaking strength

Travel Block: For easy two-part line hook up, includes swivel safety hook

Rotation: Full power, unlimited by use of electric swivel

Boom Elevation: Full power from -5 Degrees to 75 Degrees

Boom Extension: Manual, two sections from 6 Ft. to 10 Ft. to 14 Ft.

Counterbalance (holding) valve integrated in elevation cylinder

Overload protection system

Anti-Two Block (ATB) system

Meets requirements of 29 CFR 1910.180, ANSI B30.5 and SAE J1063

Mounting plate is 15 In. square with a 12 In. square bolt pattern with nut for ground cable

### **INCLUDED**

Battery power cable #1 X 30 Ft. with quick disconnect mecon

Circuit breaker, 150 Amp

Ground Cable 1/0 x 3 Ft. for grounding the factory battery to the truck frame

Master disconnect switch and bracket

Mounting Bolts Grade 8: 0.50 In. x 2.50 In. (qty. 4)

Terminal lugs #1 GA 0.25 In. Dia. (qty. 2) and #1 GA 0.37 In. Dia. (qty. 2)

Crane truck stability plate, Bubble level

Recommended installation instructions and owner's manual

### **REQUIRED (NOT INCLUDED)**

Protected, dedicated electrical circuit providing consistent 12V DC power source with sufficient amperage while operating under load

For optimum performance, a dedicated Group 31 or larger deep cycle battery installed near the crane is advised

Installer responsible for meeting OSHA stability requirements of 29 CFR—1910.180(c)(1)

Boom rest

### **RECOMMENDED**

For optimum performance, a dedicated Group 31 deep cycle battery installed near the crane is advised

12K outrigger or jackstand to provide stability and an appropriately level condition

## 12V D.C. POWERED ELECTRIC CRANES MODEL 2700AR

### Crane Pricing and Recommended Options / Accessories

**ITEM NO.**

**CRANE OPTIONS**

**39497** LIFTMOORE CRANE 2700AR-14  
WEIGHT: Shipping 775 Lbs. / Actual 608 Lbs.

**CONTROL OPTIONS**

**28492** MEGA wireless control add-on, works interchangeably with wired pendant control

**LED BOOM TIP LIGHTS (INSTALLED)**

**INST-2008** INSTALL 29167 KIT, LIGHT LED E  
Includes two self-leveling LED boom tip lights rated at 2,100 lumens each

**RECOMMENDED ACCESSORIES**

BOOM REST 27860 or 22158 - See page 66 and 67

MOUNTING PLATE 30685 - See page 78

12K PEDESTAL 18375 or 22796 - See page 77

12K JACKSTAND - See page 68

12K OUTRIGGER - See page 70

CIRCUIT BREAKER KIT 29915 - See page 78

## **12V D.C. POWERED ELECTRIC CRANES MODEL 2010REL**

### **SPECIFICATIONS**

Moment Rating: 10,000 Ft.-Lbs.

Maximum Capacity: 2,000 Lbs. at 5 Ft. load radius

Winch: Planetary gears with 2.4 HP permanent magnet motor, winch mounted on boom

Control System: On/Off 12V electric controls

Control Type: Remote pendant control, 18 Ft., removable with E-Stop and audible signal function

Wire Rope: Galvanized Aircraft Cable 1/4 In. x 50 Ft. with ball bearing swivel safety hook and 7,000 Lb. breaking strength

Down haul pickle weight

Rotation: Full power, unlimited by use of electric swivel

Boom Elevation: Full power from -5 Degrees to 75 Degrees

Boom Extension: Manual, two sections from 7 Ft. to 11 Ft. to 15 Ft.

Counterbalance (holding) valve integrated in elevation cylinder

Overload protection system

Anti-Two Block (ATB) system

Meets requirements of 29 CFR 1910.180, ANSI B30.5 and SAE J1063

Mounting plate is 14 In. square with a 12 In. square bolt pattern

Ground cable 1/0 x 5 Ft. installed on bottom of base plate to ground post of auxiliary battery or appropriate proximity to chassis frame

Digital readout voltmeter / ammeter for monitoring DC supply to crane

### **INCLUDED**

Battery power cable #1 X 30 Ft. with quick disconnect mecon

Circuit breaker, 150 Amp (qty. 2)

Ground Cable 1/0 x 3 Ft. for grounding the factory battery to the truck frame

Master disconnect switch and bracket

Mounting Bolts Grade 8: 0.50 In. x 2.50 In. (qty. 4)

Terminal lugs #1 GA 0.25 In. Dia. (qty. 2) and #1 GA 0.37 In. Dia. (qty. 2)

Crane truck stability plate, Bubble level

Recommended installation instructions and owner's manual

### **REQUIRED (NOT INCLUDED)**

Protected, dedicated electrical circuit providing consistent 12V DC power source with sufficient amperage while operating under load

Installer responsible for meeting OSHA stability requirements of 29 CFR—1910.180(c)(1)

Boom rest

### **RECOMMENDED**

For optimum performance, a dedicated Group 31 or larger deep cycle battery installed near the crane is advised

12K outrigger or jackstand to provide stability and an appropriately level condition



## 12V D.C. POWERED ELECTRIC CRANES MODEL 2010REL

### Crane Pricing and Recommended Options / Accessories

#### ITEM NO.

#### CRANE OPTIONS

**39442** LIFTMOORE CRANE 2010REL-15  
WEIGHT: Shipping 780 Lbs. / Actual 640 Lbs.

#### CONTROL OPTIONS

**28492** MEGA wireless control add-on, works interchangeably with wired pendant control

#### LED BOOM TIP LIGHTS (INSTALLED)

**INST-2008** INSTALL 29167 KIT, LIGHT LED E  
Includes two self-leveling LED boom tip lights rated at 2,100 lumens each

#### RECOMMENDED ACCESSORIES

BOOM REST 27860 or 22158 - See page 66 and 67

MOUNTING PLATE 28694 - See page 78

12K PEDESTAL 18375 or 22796 - See page 77

12K JACKSTAND - See page 68

12K OUTRIGGER - See page 70

CIRCUIT BREAKER KIT 29915 - See page 78

## **12V D.C. POWERED ELECTRIC CRANES MODEL 2010REE**

### **SPECIFICATIONS**

Moment Rating: 10,000 Ft.-Lbs.

Maximum Capacity: 2,000 Lbs. at 5 Ft. load radius

Winch: Planetary gears with 2.4 HP permanent magnet motor, winch mounted on boom

Control System: 12V electric controls (see crane and control options)

Control Type: (see crane and control options)

Wire Rope: Galvanized Aircraft Cable 1/4 In. x 50 Ft. with ball bearing swivel safety hook and 7,000 Lb. breaking strength

Down haul pickle weight

Rotation: Full power, unlimited by use of electric swivel

Boom Elevation: Full power from –5 Degrees to 75 Degrees

Boom Extension: Power from 7 Ft. to 11 Ft. and manual from 11 Ft. to 15 Ft.

Counterbalance (holding) valve integrated in both elevation and extension cylinders

Overload protection system

Anti-Two Block (ATB) system

Meets requirements of 29 CFR 1910.180, ANSI B30.5 and SAE J1063

Mounting plate is 14 In. square with a 12 In. square bolt pattern

Ground cable 1/0 x 5 Ft. installed on bottom of base plate to ground post of auxiliary battery or appropriate proximity to chassis frame

Digital readout voltmeter / ammeter for monitoring DC supply to crane

### **INCLUDED**

Battery power cable #1 X 30 Ft. with quick disconnect mecon

Circuit breaker, 150 Amp (qty. 2)

Ground Cable 1/0 x 3 Ft. for grounding the factory battery to the truck frame

Master disconnect switch and bracket

Mounting Bolts Grade 8: 0.50 In. x 2.50 In. (qty. 4)

Terminal lugs #1 GA 0.25 In. Dia. (qty. 2) and #1 GA 0.37 In. Dia. (qty. 2)

Crane truck stability plate, Bubble level

Recommended installation instructions and owner's manual

### **REQUIRED (NOT INCLUDED)**

Protected, dedicated electrical circuit providing consistent 12V DC power source with sufficient amperage while operating under load

Installer responsible for meeting OSHA stability requirements of 29 CFR—1910.180(c)(1)

Boom rest

### **RECOMMENDED**

For optimum performance, a dedicated Group 31 or larger deep cycle battery installed near the crane is advised

12K outrigger or jackstand to provide stability and an appropriately level condition

## 12V D.C. POWERED ELECTRIC CRANES MODEL 2010REE

### Crane Pricing and Recommended Options / Accessories

#### ITEM NO.

#### CRANE OPTIONS - WIRELESS PROPORTIONAL

39457

LIFTMOORE CRANE 2010REE-15 WP

Proportional wireless controls with WIFI connectivity and diagnostics

Includes 25 Ft. CAN cable and 12V DC lighter port charger

WEIGHT: Shipping 845 Lbs. / Actual 705 Lbs.



#### CONTROL OPTIONS FOR 39457

Kit for remote control of truck engine from crane control. Features include engine start and stop, engage high idle, and additional control for auxiliary equipment

#### SPECIFY CHASSIS AT TIME OF ORDER - COMPONENT 28793

INST-2009

Kit for monitoring chassis stability

#### CRANE OPTIONS - ON/OFF PENDANT CONTROL

39434

LIFTMOORE CRANE 2010REE-15

On/Off remote pendant control, 18 Ft., removable with E-Stop and audible signal function

WEIGHT: Shipping 845 Lbs. / Actual 705 Lbs.

#### CONTROL OPTIONS FOR 39434

28492

MEGA wireless control add-on, works interchangeably with wired pendant control

#### LED BOOM TIP LIGHTS (INSTALLED)

INST-2008

INSTALL 29167 KIT, LIGHT LED E

Includes two self-leveling LED boom tip lights rated at 2,100 lumens each

#### RECOMMENDED ACCESSORIES

BOOM REST 27860 or 22158 - See page 66 and 67

MOUNTING PLATE 28694 - See page 78

12K PEDESTAL 18375 or 22796 - See page 77

12K JACKSTAND - See page 68

12K OUTRIGGER - See page 70

CIRCUIT BREAKER KIT 29915 - See page 78

**NOTE: List price for On/Off crane with pendant control plus wireless option, is equal to the list price of the WP crane which comes standard with wireless proportional controls and WIFI diagnostics**

## **12V D.C. POWERED ELECTRIC CRANES**

### **MODEL 3200REE**

#### **SPECIFICATIONS**

Moment Rating: 10,000 Ft.-Lbs.

Maximum Capacity: 3,200 Lbs. at 3 Ft. load radius

Winch: Planetary gears with 2.4 HP permanent magnet motor

Control System: On/Off 12V electric controls

Control Type: Remote pendant control, 18 Ft., removable with E-Stop and audible signal function

Wire Rope: Galvanized Aircraft Cable, 1/4 In. x 62 Ft. with 7,000 Lb. breaking strength

Travel Block: For easy two-part line hook up, includes swivel safety hook

Rotation: Full power, unlimited by use of electric swivel

Boom Elevation: Full power from –5 Degrees to 75 Degrees

Boom Extension: Power from 7 Ft. to 11 Ft. and manual from 11 Ft. to 15 Ft.

Counterbalance (holding) valve integrated in both elevation and extension cylinders

Overload protection system

Anti-Two Block (ATB) system

Meets requirements of 29 CFR 1910.180, ANSI B30.5 and SAE J1063

Mounting plate is 15 In. square with a 12 In. square bolt pattern with nut for ground cable

#### **INCLUDED**

Battery power cable #1 X 30 Ft. with quick disconnect mecon

Circuit breaker, 150 Amp (qty. 2)

Ground Cable 1/0 x 3 Ft. for grounding the factory battery to the truck frame

Master disconnect switch and bracket

Mounting Bolts Grade 8: 0.50 In. x 2.50 In. (qty. 4)

Terminal lugs #1 GA 0.25 In. Dia. (qty. 2) and #1 GA 0.37 In. Dia. (qty. 2)

Bubble level

Crane truck stability plate

Recommended installation instructions and owner's manual

#### **REQUIRED (NOT INCLUDED)**

Protected, dedicated electrical circuit providing consistent 12V DC power source with sufficient amperage while operating under load

Installer responsible for meeting OSHA stability requirements of 29 CFR—1910.180(c)(1)

Boom rest

#### **RECOMMENDED**

For optimum performance, a dedicated Group 31 or larger deep cycle battery installed near the crane is advised

12K outrigger or jackstand to provide stability and an appropriately level condition

## 12V D.C. POWERED ELECTRIC CRANES MODEL 3200REE

### Crane Pricing and Recommended Options / Accessories

#### ITEM NO.

#### CRANE OPTIONS

**39496** LIFTMOORE CRANE 3200REE-15  
WEIGHT: Shipping 865 Lbs. / Actual 733 Lbs.

#### CONTROL OPTIONS

**28492** MEGA wireless control add-on, works interchangeably with wired pendant control

#### RECOMMENDED ACCESSORIES

BOOM REST 27860 or 22158 - See page 66 and 67

MOUNTING PLATE 30685 - See page 78

12K PEDESTAL 18375 or 22796 - See page 77

12K JACKSTAND - See page 68

12K OUTRIGGER - See page 70

CIRCUIT BREAKER KIT 29915 - See page 78

**NOTE: The 3200REL / 3200REE has been replaced by the 3612REL / 3612REE**  
**The 3200REE will still be produced in cases where the crane is written in a**  
**specification. Supporting documentation or specification must be submitted**  
**to Liftmoore for pricing.**

## **12V D.C. POWERED ELECTRIC CRANES**

### **MODEL 3612REL**

#### **SPECIFICATIONS**

Moment Rating: 12,000 Ft.-Lbs.

Maximum Capacity: 3,600 Lbs. at 3.3 Ft. load radius

Winch: Planetary gears with 2.4 HP permanent magnet motor, winch mounted on boom

Control System: On/Off 12V electric controls

Control Type: Remote pendant control, 18 Ft., removable with E-Stop and audible signal function

Wire Rope: Galvanized Aircraft Cable, 1/4 In. x 62 Ft. with 7,000 Lb. breaking strength

Travel Block: For easy two-part line hook up, includes swivel safety hook

Rotation: Full power, unlimited by use of electric swivel

Boom Elevation: Full power from -5 Degrees to 75 Degrees

Boom Extension: Manual two sections from 7 Ft. to 11 Ft. to 15 Ft.

Counterbalance (holding) valve integrated in elevation cylinder

Overload protection system

Anti-Two Block (ATB) system

Meets requirements of 29 CFR 1910.180, ANSI B30.5 and SAE J1063

Mounting plate is 14 In. square with a 12 In. square bolt pattern

Ground cable 1/0 x 5 Ft. installed on bottom of base plate to ground post of auxiliary battery or appropriate proximity to chassis frame

Digital readout voltmeter / ammeter for monitoring DC supply to crane

#### **INCLUDED**

Battery power cable #1 X 30 Ft. with quick disconnect mecon

Circuit breaker, 150 Amp (qty. 2)

Ground Cable 1/0 x 3 Ft. for grounding the factory battery to the truck frame

Master disconnect switch and bracket

Mounting Bolts Grade 8: 0.50 In. x 2.50 In. (qty. 4)

Terminal lugs #1 GA 0.25 In. Dia. (qty. 2) and #1 GA 0.37 In. Dia. (qty. 2)

Crane truck stability plate, Bubble level

Recommended installation instructions and owner's manual

#### **REQUIRED (NOT INCLUDED)**

Protected, dedicated electrical circuit providing consistent 12V DC power source with sufficient amperage while operating under load

Installer responsible for meeting OSHA stability requirements of 29 CFR—1910.180(c)(1)

Boom rest

#### **RECOMMENDED**

For optimum performance, a dedicated Group 31 or larger deep cycle battery installed near the crane is advised

12K outrigger or jackstand to provide stability and an appropriately level condition

## 12V D.C. POWERED ELECTRIC CRANES MODEL 3612REL

### Crane Pricing and Recommended Options / Accessories

#### ITEM NO.

#### CRANE OPTIONS

**39438** LIFTMOORE CRANE 3612REL-15  
WEIGHT: Shipping 780 Lbs. / Actual 640 Lbs.

#### CONTROL OPTIONS

**28492** MEGA wireless control add-on, works interchangeably with wired pendant control

#### LED BOOM TIP LIGHTS (INSTALLED)

**INST-2008** INSTALL 29167 KIT, LIGHT LED E  
Includes two self-leveling LED boom tip lights rated at 2,100 lumens each

#### RECOMMENDED ACCESSORIES

BOOM REST 27860 or 22158 - See page 66 and 67

MOUNTING PLATE 28694 - See page 78

12K PEDESTAL 18375 or 22796 - See page 77

12K JACKSTAND - See page 68

12K OUTRIGGER - See page 70

CIRCUIT BREAKER KIT 29915 - See page 78

## **12V D.C. POWERED ELECTRIC CRANES**

### **MODEL 3612REE**

#### **SPECIFICATIONS**

Moment Rating: 12,000 Ft.-Lbs.  
Maximum Capacity: 3,600 Lbs. at 3.3 Ft. load radius  
Winch: Planetary gears with 2.4 HP permanent magnet motor, winch mounted on boom  
Control System: 12V electric controls (see crane and control options)  
Control Type: (see crane and control options)  
Wire Rope: Galvanized Aircraft Cable, 1/4 In. x 62 Ft. with 7,000 Lb. breaking strength  
Travel Block: For easy two-part line hook up, includes swivel safety hook  
Rotation: Full power, unlimited by use of electric swivel  
Boom Elevation: Full power from –5 Degrees to 75 Degrees  
Boom Extension: Power from 7 Ft. to 11 Ft. and manual from 11 Ft. to 15 Ft.  
Counterbalance (holding) valve integrated in both elevation and extension cylinders  
Overload protection system  
Anti-Two Block (ATB) system  
Meets requirements of 29 CFR 1910.180, ANSI B30.5 and SAE J1063  
Mounting plate is 14 In. square with a 12 In. square bolt pattern  
Ground cable 1/0 x 5 Ft. installed on bottom of base plate to ground post of auxiliary battery or appropriate proximity to chassis frame  
Digital readout voltmeter / ammeter for monitoring DC supply to crane

#### **INCLUDED**

Battery power cable #1 X 30 Ft. with quick disconnect mecon  
Circuit breaker, 150 Amp (qty. 2)  
Ground Cable 1/0 x 3 Ft. for grounding the factory battery to the truck frame  
Master disconnect switch and bracket  
Mounting Bolts Grade 8: 0.50 In. x 2.50 In. (qty. 4)  
Terminal lugs #1 GA 0.25 In. Dia. (qty. 2) and #1 GA 0.37 In. Dia. (qty. 2)  
Crane truck stability plate, Bubble level  
Recommended installation instructions and owner's manual

#### **REQUIRED (NOT INCLUDED)**

Protected, dedicated electrical circuit providing consistent 12V DC power source with sufficient amperage while operating under load  
Installer responsible for meeting OSHA stability requirements of 29 CFR—1910.180(c)(1)  
Boom rest

#### **RECOMMENDED**

For optimum performance, a dedicated Group 31 or larger deep cycle battery installed near the crane is advised  
12K outrigger or jackstand to provide stability and an appropriately level condition



## 12V D.C. POWERED ELECTRIC CRANES MODEL 3612REE

### Crane Pricing and Recommended Options / Accessories

#### ITEM NO.

#### CRANE OPTIONS - WIRELESS PROPORTIONAL

39458

LIFTMOORE CRANE 3612REE-15 WP

Proportional wireless controls with WIFI connectivity and diagnostics

Includes 25 Ft. CAN cable and 12V DC lighter port charger

WEIGHT: Shipping 845 Lbs. / Actual 705 Lbs.



#### CONTROL OPTIONS FOR 39458

Kit for remote control of truck engine from crane control. Features include engine start and stop, engage high idle, and additional control for auxiliary equipment

#### SPECIFY CHASSIS AT TIME OF ORDER - COMPONENT 28793

INST-2009

Kit for monitoring chassis stability

#### CRANE OPTIONS - ON/OFF PENDANT CONTROL

39440

LIFTMOORE CRANE 3612REE-15

On/Off remote pendant control, 18 Ft., removable with E-Stop and audible signal function

WEIGHT: Shipping 845 Lbs. / Actual 705 Lbs.

#### CONTROL OPTIONS FOR 39440

28492

MEGA wireless control add-on, works interchangeably with wired pendant control

#### LED BOOM TIP LIGHTS (INSTALLED)

INST-2008

INSTALL 29167 KIT, LIGHT LED E

Includes two self-leveling LED boom tip lights rated at 2,100 lumens each

#### RECOMMENDED ACCESSORIES

BOOM REST 27860 or 22158 - See page 66 and 67

MOUNTING PLATE 28694 - See page 78

12K PEDESTAL 18375 or 22796 - See page 77

12K JACKSTAND - See page 68

12K OUTRIGGER - See page 70

CIRCUIT BREAKER KIT 29915 - See page 78

**NOTE: List price for On/Off crane with pendant control plus wireless option, is equal to the list price of the WP crane which comes standard with wireless proportional controls and WIFI diagnostics**

## **12V D.C. POWERED ELECTRIC CRANES**

### **MODEL 3612X 9-15**

#### **SPECIFICATIONS**

Moment Rating: 12,000 Ft.-Lbs.

Maximum Capacity: 3,600 Lbs. at 3.3 Ft. load radius

Winch: Planetary gears with 2.4 HP permanent magnet motor, winch mounted on boom

Control System: 12V electric controls (see crane and control options)

Control Type: (see crane and control options)

Wire Rope: Galvanized Aircraft Cable, 1/4 In. x 62 Ft. with 7,000 Lb. breaking strength

Travel Block: For easy two-part line hook up, includes swivel safety hook

Rotation: Full power, unlimited by use of electric swivel

Boom Elevation: Full power from -5 Degrees to 75 Degrees

Boom Extension: Full power from 9 Ft. to 15 Ft. in one section

Counterbalance (holding) valve integrated in both elevation and extension cylinders

Overload protection system

Anti-Two Block (ATB) system

Meets requirements of 29 CFR 1910.180, ANSI B30.5 and SAE J1063

Mounting plate is 14 In. square with a 12 In. square bolt pattern

Ground cable 1/0 x 5 Ft. installed on bottom of base plate to ground post of auxiliary battery or appropriate proximity to chassis frame

Digital readout voltmeter / ammeter for monitoring DC supply to crane

#### **INCLUDED**

Battery power cable #1 X 30 Ft. with quick disconnect mecon

Circuit breaker, 150 Amp (qty. 2)

Ground Cable 1/0 x 3 Ft. for grounding the factory battery to the truck frame

Master disconnect switch and bracket

Mounting Bolts Grade 8: 0.50 In. x 2.50 In. (qty. 4)

Terminal lugs #1 GA 0.25 In. Dia. (qty. 2) and #1 GA 0.37 In. Dia. (qty. 2)

Crane truck stability plate, Bubble level

Recommended installation instructions and owner's manual

#### **REQUIRED (NOT INCLUDED)**

Protected, dedicated electrical circuit providing consistent 12V DC power source with sufficient amperage while operating under load

Installer responsible for meeting OSHA stability requirements of 29 CFR—1910.180(c)(1)

Boom rest

#### **RECOMMENDED**

For optimum performance, a dedicated Group 31 or larger deep cycle battery installed near the crane is advised

12K outrigger or jackstand to provide stability and an appropriately level condition

## 12V D.C. POWERED ELECTRIC CRANES MODEL 3612X 9-15

### Crane Pricing and Recommended Options / Accessories

#### ITEM NO.

#### CRANE OPTIONS - WIRELESS PROPORTIONAL

**39456**

LIFTMOORE CRANE 3612X 9-15 WP



Proportional wireless controls with WIFI connectivity and diagnostics

Includes 25 Ft. CAN cable and 12V DC lighter port charger

WEIGHT: Shipping 905 Lbs. / Actual 755 Lbs.

#### CONTROL OPTIONS FOR 39456

Kit for remote control of truck engine from crane control. Features include engine start and stop, engage high idle, and additional control for auxiliary equipment

#### SPECIFY CHASSIS AT TIME OF ORDER - COMPONENT 28793

**INST-2009**

Kit for monitoring chassis stability

#### CRANE OPTIONS - ON/OFF PENDANT CONTROL

**39445**

LIFTMOORE CRANE 3612X 9-15

On/Off remote pendant control, 18 Ft., removable with E-Stop and audible signal function

WEIGHT: Shipping 905 Lbs. / Actual 755 Lbs.

#### CONTROL OPTIONS FOR 39445

**28492**

MEGA wireless control add-on, works interchangeably with wired pendant control

#### LED BOOM TIP LIGHTS (INSTALLED)

**INST-2008**

INSTALL 29167 KIT, LIGHT LED E

Includes two self-leveling LED boom tip lights rated at 2,100 lumens each

#### RECOMMENDED ACCESSORIES

BOOM REST 27860 or 22158 - See page 66 and 67

MOUNTING PLATE 28694 - See page 78

12K PEDESTAL 18375 or 22796 - See page 77

12K JACKSTAND - See page 68

12K OUTRIGGER - See page 70

CIRCUIT BREAKER KIT 29915 - See page 78

**NOTE: List price for On/Off crane with pendant control plus wireless option, is equal to the list price of the WP crane which comes standard with wireless proportional controls and WIFI diagnostics**

## **12V D.C. POWERED ELECTRIC CRANES**

### **MODEL 4000X-16**

#### **SPECIFICATIONS**

Moment Rating: 16,000 Ft.-Lbs.

Maximum Capacity: 4,000 Lbs. at 4 Ft. load radius

Winch: Planetary gears with 2.4 HP permanent magnet motor

Control System: 12V electric controls (see crane and control options)

Control Type: (see crane and control options)

Wire Rope: Galvanized Aircraft Cable, 1/4 In. x 75 Ft. with 7,000 Lb. breaking strength

Travel Block: For easy two-part line hook up, includes swivel safety hook

Rotation: Full power, unlimited by use of electric swivel

Boom Elevation: Full power from –5 Degrees to 75 Degrees

Boom Extension: Power from 8 Ft. to 12 Ft. and manual from 12 Ft. to 16 Ft.

Counterbalance (holding) valve integrated in both elevation and extension cylinders

Overload protection system

Anti-Two Block (ATB) system

Meets requirements of 29 CFR 1910.180, ANSI B30.5 and SAE J1063

Mounting plate is 15 In. square with a 12 In. square bolt pattern

Ground cable 1/0 x 5 Ft. installed on bottom of base plate to ground post of auxiliary battery or appropriate proximity to chassis frame

Digital readout voltmeter / ammeter for monitoring DC supply to crane

#### **INCLUDED**

Battery power cable #1 X 30 Ft. with quick disconnect mecon

Circuit breaker, 150 Amp (qty. 2)

Ground Cable 1/0 x 3 Ft. for grounding the factory battery to the truck frame

Master disconnect switch and bracket

Mounting Bolts Grade 8: 0.75 In. x 3.50 In. (qty. 4)

Terminal lugs #1 GA 0.25 In. Dia. (qty. 2) and #1 GA 0.37 In. Dia. (qty. 2)

Crane truck stability plate, Bubble level

Recommended installation instructions and owner's manual

#### **REQUIRED (NOT INCLUDED)**

Protected, dedicated electrical circuit providing consistent 12V DC power source with sufficient amperage while operating under load

Installer responsible for meeting OSHA stability requirements of 29 CFR—1910.180(c)(1)

Boom rest

#### **RECOMMENDED**

For optimum performance, a dedicated Group 31 or larger deep cycle battery installed near the crane is advised

18K outrigger or jackstand to provide stability and an appropriately level condition

## 12V D.C. POWERED ELECTRIC CRANES

### MODEL 4000X-16

#### Crane Pricing and Recommended Options / Accessories

##### ITEM NO.

##### CRANE OPTIONS - WIRELESS PROPORTIONAL

**39460**

LIFTMOORE CRANE 4000X-16 WP

Proportional wireless controls with WIFI connectivity and diagnostics

Includes 25 Ft. CAN cable and 12V DC lighter port charger

WEIGHT: Shipping 960 Lbs. / Actual 858 Lbs.



##### CONTROL OPTIONS FOR 39460

Kit for remote control of truck engine from crane control. Features include engine start and stop, engage high idle, and additional control for auxiliary equipment

##### SPECIFY CHASSIS AT TIME OF ORDER - COMPONENT 28793

**INST-2009**

Kit for monitoring chassis stability

##### CRANE OPTIONS - ON/OFF PENDANT CONTROL

**39454**

LIFTMOORE CRANE 4000X-16

On/Off remote pendant control, 25 Ft., removable with E-Stop and audible signal function

WEIGHT: Shipping 960 Lbs. / Actual 858 Lbs.

##### CONTROL OPTIONS FOR 39454

**28492**

MEGA wireless control add-on, works interchangeably with wired pendant control

##### LED BOOM TIP LIGHTS (INSTALLED)

**INST-2008**

INSTALL 29167 KIT, LIGHT LED E

Includes two self-leveling LED boom tip lights rated at 2,100 lumens each

##### RECOMMENDED ACCESSORIES

BOOM REST 27860 or 22158 - See page 66 and 67

MOUNTING PLATE 16698 - See page 78

16K PEDESTAL 34076 - See page 77

18K OUTRIGGER - See page 70

CIRCUIT BREAKER KIT 29915 - See page 78

**NOTE: List price for On/Off crane with pendant control plus wireless option, is equal to the list price of the WP crane which comes standard with wireless proportional controls and WIFI diagnostics**

## **12V D.C. POWERED ELECTRIC CRANES**

### **MODEL 4000X-20**

#### **SPECIFICATIONS**

Moment Rating: 16,000 Ft.-Lbs.

Maximum Capacity: 4,000 Lbs. at 4 Ft. load radius

Winch: Planetary gears with 2.4 HP permanent magnet motor

Control System: 12V electric controls (see crane and control options)

Control Type: (see crane and control options)

Wire Rope: Galvanized Aircraft Cable, 1/4 In. x 75 Ft. with 7,000 Lb. breaking strength

Travel Block: For easy two-part line hook up, includes swivel safety hook

Rotation: Full power, unlimited by use of electric swivel

Boom Elevation: Full power from –5 Degrees to 75 Degrees

Boom Extension: Power from 10 Ft. to 16 Ft. and manual from 16 Ft. to 20 Ft.

Counterbalance (holding) valve integrated in both elevation and extension cylinders

Overload protection system

Anti-Two Block (ATB) system

Meets requirements of 29 CFR 1910.180, ANSI B30.5 and SAE J1063

Mounting plate is 15 In. square with a 12 In. square bolt pattern

Ground cable 1/0 x 5 Ft. installed on bottom of base plate to ground post of auxiliary battery or appropriate proximity to chassis frame

Digital readout voltmeter / ammeter for monitoring DC supply to crane

#### **INCLUDED**

Battery power cable #1 X 30 Ft. with quick disconnect mecon

Circuit breaker, 150 Amp (qty. 2)

Ground Cable 1/0 x 3 Ft. for grounding the factory battery to the truck frame

Master disconnect switch and bracket

Mounting Bolts Grade 8: 0.75 In. x 3.50 In. (qty. 4)

Terminal lugs #1 GA 0.25 In. Dia. (qty. 2) and #1 GA 0.37 In. Dia. (qty. 2)

Crane truck stability plate, Bubble level

Recommended installation instructions and owner's manual

#### **REQUIRED (NOT INCLUDED)**

Protected, dedicated electrical circuit providing consistent 12V DC power source with sufficient amperage while operating under load

Installer responsible for meeting OSHA stability requirements of 29 CFR—1910.180(c)(1)

Boom rest

#### **RECOMMENDED**

For optimum performance, a dedicated Group 31 or larger deep cycle battery installed near the crane is advised

18K outrigger or jackstand to provide stability and an appropriately level condition

## 12V D.C. POWERED ELECTRIC CRANES

### MODEL 4000X-20

#### Crane Pricing and Recommended Options / Accessories

##### ITEM NO.

##### CRANE OPTIONS - WIRELESS PROPORTIONAL

**39461**

LIFTMOORE CRANE 4000X-20 WP

Proportional wireless controls with WIFI connectivity and diagnostics

Includes 25 Ft. CAN cable and 12V DC lighter port charger

WEIGHT: Shipping 995 Lbs. / Actual 913 Lbs.



##### CONTROL OPTIONS FOR 39461

Kit for remote control of truck engine from crane control. Features include engine start and stop, engage high idle, and additional control for auxiliary equipment

##### SPECIFY CHASSIS AT TIME OF ORDER - COMPONENT 28793

**INST-2009**

Kit for monitoring chassis stability

##### CRANE OPTIONS - ON/OFF PENDANT CONTROL

**39452**

LIFTMOORE CRANE 4000X-20

On/Off remote pendant control, 25 Ft., removable with E-Stop and audible signal function

WEIGHT: Shipping 995 Lbs. / Actual 913 Lbs.

##### CONTROL OPTIONS FOR 39452

**28492**

MEGA wireless control add-on, works interchangeably with wired pendant control

##### LED BOOM TIP LIGHTS (INSTALLED)

**INST-2008**

INSTALL 29167 KIT, LIGHT LED E

Includes two self-leveling LED boom tip lights rated at 2,100 lumens each

##### RECOMMENDED ACCESSORIES

BOOM REST 27860 or 22158 - See page 66 and 67

MOUNTING PLATE 16698 - See page 78

16K PEDESTAL 34076 - See page 77

18K OUTRIGGER - See page 70

CIRCUIT BREAKER KIT 29915 - See page 78

**NOTE: List price for On/Off crane with pendant control plus wireless option, is equal to the list price of the WP crane which comes standard with wireless proportional controls and WIFI diagnostics**

## **12V D.C. POWERED ELECTRIC CRANES**

### **MODEL 5000X-20**

#### **SPECIFICATIONS**

Moment Rating: 25,000 Ft.-Lbs.

Maximum Capacity: 5,000 Lbs. at 5 Ft. load radius

Winch: Planetary gears with 2.5 HP series wound motor

Control System: 12V electric controls (see crane and control options)

Control Type: (see crane and control options)

Wire Rope: Galvanized Aircraft Cable, 5/16 In. x 80 Ft. with 9,600 Lb. breaking strength

Travel Block: For easy two-part line hook up, includes roller bearing swivel safety hook

Rotation: Full power, unlimited by use of electric swivel

Boom Elevation: Full power from –5 Degrees to 75 Degrees

Boom Extension: Power from 10 Ft. to 16 Ft. and manual from 16 Ft. to 20 Ft.

Counterbalance (holding) valve integrated in both elevation and extension cylinders

Overload protection system

Anti-Two Block (ATB) system

Meets requirements of 29 CFR 1910.180, ANSI B30.5 and SAE J1063

Mounting plate is 16.75 In. square with a 14.75 In. square bolt pattern

Ground cable 1/0 x 5 Ft. installed on bottom of base plate to ground post of auxiliary battery or appropriate proximity to chassis frame

Digital readout voltmeter / ammeter for monitoring DC supply to crane

#### **INCLUDED**

Battery power cable 1/0 X 30 Ft. with quick disconnect mecon

Circuit breaker, 150 Amp (qty. 2) and 200 amp (qty. 1)

Ground Cable 1/0 x 3 Ft. for grounding the factory battery to the truck frame

Master disconnect switch and bracket

Terminal lugs 1/0 0.25 In. Dia. (qty. 4), 1/0 0.37 In. Dia. (qty. 4), 1/0 0.31 In. Dia. (qty. 1)

Crane truck stability plate, Bubble level

Recommended installation instructions and owner's manual

#### **REQUIRED (NOT INCLUDED)**

Protected, dedicated electrical circuit providing consistent 12V DC power source with sufficient amperage while operating under load

For optimum performance, a dedicated Group 4D or (2) Group 31 deep cycle batteries installed near the crane is advised

Mounting Bolts Grade 8: 0.875 In. (qty. 4)

Installer responsible for meeting OSHA stability requirements of 29 CFR—1910.180(c)(1)

Boom rest

#### **RECOMMENDED**

25K outrigger to provide stability and an appropriately level condition



## 12V D.C. POWERED ELECTRIC CRANES

### MODEL 5000X-20

#### Crane Pricing and Recommended Options / Accessories

##### ITEM NO.

##### CRANE OPTIONS - WIRELESS PROPORTIONAL

**39462**

LIFTMOORE CRANE 5000X-20 WP



Proportional wireless controls with WIFI connectivity and diagnostics

Includes 25 Ft. CAN cable and 12V DC lighter port charger

WEIGHT: Shipping 1,670 Lbs. / Actual 1,317 Lbs.

##### CONTROL OPTIONS FOR 39462

Kit for remote control of truck engine from crane control. Features include engine start and stop, engage high idle, and additional control for auxiliary equipment

##### SPECIFY CHASSIS AT TIME OF ORDER - COMPONENT 28793

**INST-2009**

Kit for monitoring chassis stability

##### CRANE OPTIONS - ON/OFF PENDANT CONTROL

**39418**

LIFTMOORE CRANE 5000X-20

On/Off remote pendant control, 25 Ft., removable with E-Stop and audible signal function

WEIGHT: Shipping 1,670 Lbs. / Actual 1,317 Lbs.

##### CONTROL OPTIONS FOR 39418

**28492**

MEGA wireless control add-on, works interchangeably with wired pendant control

##### LED BOOM TIP LIGHTS (INSTALLED)

**INST-2008**

INSTALL 29167 KIT, LIGHT LED E

Includes two self-leveling LED boom tip lights rated at 2,100 lumens each

##### RECOMMENDED ACCESSORIES

BOOM REST - See page 66 and 67

MOUNTING PLATE 31821 - See page 78

25K PEDESTAL 32624 - See page 77

25K OUTRIGGER - See page 71 and 72

**NOTE: List price for On/Off crane with pendant control plus wireless option, is equal to the list price of the WP crane which comes standard with wireless proportional controls and WIFI diagnostics**

## **12V D.C. POWERED ELECTRIC CRANES**

### **MODEL 5000X 12-20**

#### **SPECIFICATIONS**

Moment Rating: 25,000 Ft.-Lbs.

Maximum Capacity: 5,000 Lbs. at 5 Ft. load radius

Winch: Planetary gears with 2.5 HP series wound motor

Control System: 12V electric controls (see crane and control options)

Control Type: (see crane and control options)

Wire Rope: Galvanized Aircraft Cable, 5/16 In. x 80 Ft. with 9,600 Lb. breaking strength

Travel Block: For easy two-part line hook up, includes roller bearing swivel safety hook

Rotation: Full power, unlimited by use of electric swivel

Boom Elevation: Full power from –5 Degrees to 75 Degrees

Boom Extension: Full power from 12 Ft. to 20 Ft. in one section

Counterbalance (holding) valve integrated in both elevation and extension cylinders

Overload protection system

Anti-Two Block (ATB) system

Meets requirements of 29 CFR 1910.180, ANSI B30.5 and SAE J1063

Mounting plate is 16.75 In. square with a 14.75 In. square bolt pattern

Ground cable 1/0 x 5 Ft. installed on bottom of base plate to ground post of auxiliary battery or appropriate proximity to chassis frame

Digital readout voltmeter / ammeter for monitoring DC supply to crane

#### **INCLUDED**

Battery power cable 1/0 X 30 Ft. with quick disconnect mecon

Circuit breaker, 150 Amp (qty. 2) and 200 amp (qty. 1)

Ground Cable 1/0 x 3 Ft. for grounding the factory battery to the truck frame

Master disconnect switch and bracket

Terminal lugs 1/0 0.25 In. Dia. (qty. 4), 1/0 0.37 In. Dia. (qty. 4), 1/0 0.31 In. Dia. (qty. 1)

Crane truck stability plate, Bubble level

Recommended installation instructions and owner's manual

#### **REQUIRED (NOT INCLUDED)**

Protected, dedicated electrical circuit providing consistent 12V DC power source with sufficient amperage while operating under load

For optimum performance, a dedicated Group 4D or (2) Group 31 deep cycle batteries installed near the crane is advised

Mounting Bolts Grade 8: 0.875 In. (qty. 4)

Installer responsible for meeting OSHA stability requirements of 29 CFR—1910.180(c)(1)

Boom rest

#### **RECOMMENDED**

25K outrigger to provide stability and an appropriately level condition

## 12V D.C. POWERED ELECTRIC CRANES

### MODEL 5000X 12-20

#### Crane Pricing and Recommended Options / Accessories

##### ITEM NO.

##### CRANE OPTIONS - WIRELESS PROPORTIONAL

**39463**

LIFTMOORE CRANE 5000X 12-20 WP

Proportional wireless controls with WIFI connectivity and diagnostics

Includes 25 Ft. CAN cable and 12V DC lighter port charger

WEIGHT: Shipping 1,685 Lbs. / Actual 1,392 Lbs.



##### CONTROL OPTIONS FOR 39463

Kit for remote control of truck engine from crane control. Features include engine start and stop, engage high idle, and additional control for auxiliary equipment

##### SPECIFY CHASSIS AT TIME OF ORDER - COMPONENT 28793

**INST-2009**

Kit for monitoring chassis stability

##### CRANE OPTIONS - ON/OFF PENDANT CONTROL

**39419**

LIFTMOORE CRANE 5000X 12-20

On/Off remote pendant control, 25 Ft., removable with E-Stop and audible signal function

WEIGHT: Shipping 1,685 Lbs. / Actual 1,392 Lbs.

##### CONTROL OPTIONS FOR 39419

**28492**

MEGA wireless control add-on, works interchangeably with wired pendant control

##### LED BOOM TIP LIGHTS (INSTALLED)

**INST-2008**

INSTALL 29167 KIT, LIGHT LED E

Includes two self-leveling LED boom tip lights rated at 2,100 lumens each

##### RECOMMENDED ACCESSORIES

BOOM REST - See page 66 and 67

MOUNTING PLATE 31821 - See page 78

25K PEDESTAL 32624 - See page 77

25K OUTRIGGER - See page 71 and 72

**NOTE: List price for On/Off crane with pendant control plus wireless option, is equal to the list price of the WP crane which comes standard with wireless proportional controls and WIFI diagnostics**

## **12V D.C. POWERED ELECTRIC CRANES**

### **MODEL 6036X-20**

#### **SPECIFICATIONS**

Moment Rating: 36,000 Ft.-Lbs.

Maximum Capacity: 6,000 Lbs. at 6 Ft. load radius

Winch: Planetary gears with 2.5 HP series wound motor

Control System: 12V electric controls (see crane and control options)

Control Type: (see crane and control options)

Wire Rope: Galvanized wire rope, 6X36, 5/16 In. x 90 Ft. with 10,540 Lb. breaking strength

Travel Block: For easy two-part line hook up, includes roller bearing swivel safety hook

Rotation: Full power, unlimited by use of electric swivel

Boom Elevation: Full power from -5 Degrees to 75 Degrees

Boom Extension: Power from 10 Ft. to 16 Ft. and manual from 16 Ft. to 20 Ft.

Counterbalance (holding) valve integrated in both elevation and extension cylinders

Overload protection system

Anti-Two Block (ATB) system

Meets requirements of 29 CFR 1910.180, ANSI B30.5 and SAE J1063

Mounting plate is 16.75 In. square with a 14.75 In. square bolt pattern

Ground cable 1/0 x 5 Ft. installed on bottom of base plate to ground post of auxiliary battery or appropriate proximity to chassis frame

Digital readout voltmeter / ammeter for monitoring DC supply to crane

#### **INCLUDED**

Battery power cable 1/0 X 30 Ft. with quick disconnect mecon

Circuit breaker, 150 Amp (qty. 2) and 200 amp (qty. 1)

Ground Cable 1/0 x 3 Ft. for grounding the factory battery to the truck frame

Master disconnect switch and bracket

Terminal lugs 1/0 0.25 In. Dia. (qty. 4), 1/0 0.37 In. Dia. (qty. 4), 1/0 0.31 In. Dia. (qty. 1)

Crane truck stability plate, Bubble level

Recommended installation instructions and owner's manual

#### **REQUIRED (NOT INCLUDED)**

Protected, dedicated electrical circuit providing consistent 12V DC power source with sufficient amperage while operating under load

For optimum performance, a dedicated Group 4D or (2) Group 31 deep cycle batteries installed near the crane is advised

Mounting Bolts Grade 8: 0.875 In. (qty. 4)

Installer responsible for meeting OSHA stability requirements of 29 CFR—1910.180(c)(1)

Boom rest

#### **RECOMMENDED**

40K outrigger to provide stability and an appropriately level condition

## 12V D.C. POWERED ELECTRIC CRANES

### MODEL 6036X-20

#### Crane Pricing and Recommended Options / Accessories

##### ITEM NO.

##### CRANE OPTIONS - WIRELESS PROPORTIONAL

**39459**

LIFTMOORE CRANE 6036X-20 WP



Proportional wireless controls with WIFI connectivity and diagnostics

Includes 25 Ft. CAN cable and 12V DC lighter port charger

WEIGHT: Shipping 1,730 Lbs. / Actual 1,484 Lbs.

##### CONTROL OPTIONS FOR 39459

Kit for remote control of truck engine from crane control. Features include engine start and stop, engage high idle, and additional control for auxiliary equipment

##### SPECIFY CHASSIS AT TIME OF ORDER - COMPONENT 28793

**INST-2009**

Kit for monitoring chassis stability

##### CRANE OPTIONS - ON/OFF PENDANT CONTROL

**39403**

LIFTMOORE CRANE 6036X-20

On/Off remote pendant control, 25 Ft., removable with E-Stop and audible signal function

WEIGHT: Shipping 1,730 Lbs. / Actual 1,484 Lbs.

##### CONTROL OPTIONS FOR 39403

**28492**

MEGA wireless control add-on, works interchangeably with wired pendant control

##### LED BOOM TIP LIGHTS (INSTALLED)

**INST-2008**

INSTALL 29167 KIT, LIGHT LED E

Includes two self-leveling LED boom tip lights rated at 2,100 lumens each

##### RECOMMENDED ACCESSORIES

BOOM REST - See page 66 and 67

MOUNTING PLATE 31821- See page 78

36K PEDESTAL 32624 - See page 77

40K OUTRIGGER - See page 73

**NOTE: List price for On/Off crane with pendant control plus wireless option, is equal to the list price of the WP crane which comes standard with wireless proportional controls and WIFI diagnostics**

## **HYDRAULIC POWERED CRANES**

### **Full Power Boom Extension, Wireless Control, Planetary Gear Winch**

#### **MODEL 2550XP 12-20**

##### **SPECIFICATIONS**

Moment Rating: 25,000 Ft.-Lbs.

Maximum Capacity: 5,000 Lbs. at 5 Ft. load radius

Winch: Planetary gears, single line speed of 31 FPM at 6 GPM

Control System: 12V proportional

Control Type: Wireless remote control with E-Stop and audible signal function

Wire Rope: Galvanized Aircraft Cable, 5/16 In. x 80 Ft. with 9,600 Lb. breaking strength

Travel Block: For easy two-part line hook up, includes roller bearing swivel safety hook

Rotation: Full power, unlimited by use of electric and hydraulic swivel

Boom Elevation: Full power from -5 Degrees to 75 Degrees

Boom Extension: Full power from 12 Ft. to 20 Ft. in one section

Counterbalance (holding) valve integrated in both elevation and extension cylinders

Overload protection system

Anti-Two Block (ATB) system

Meets requirements of 29 CFR 1910.180, ANSI B30.5 and SAE J1063

Mounting plate is 16.75 In. square with a 14.75 In. square bolt pattern

##### **INCLUDED**

Battery power cable 10 GA. X 25 Ft. with toggle switch, switch bracket, terminal rings, and fuse for the required DC power connection to vehicle

Bubble level

Crane truck stability plate

Recommended installation instructions and owner's manual

##### **REQUIRED (NOT INCLUDED)**

Hydraulic power supply such as PTO, pump, reservoir, filter and hoses

Pump should supply 6 GPM at 2,750 PSI

Protected, dedicated electrical circuit providing consistent 12V DC power source

Mounting bolts Grade 8: 0.875 In. (qty. 4)

Installer responsible for meeting OSHA stability requirements of 29 CFR—1910.180(c)(1)

Boom rest

##### **RECOMMENDED**

Adjustable pressure relief and flow control valves will ensure that the optimum performance can be obtained

25K outriggers for meeting vehicle stability requirements

## HYDRAULIC POWERED CRANES

Full Power Boom Extension, Wireless Control, Planetary Gear Winch

### MODEL 2550XP 12-20 KTG

#### Crane Pricing and Recommended Options / Accessories

#### ITEM NO.

##### CRANE OPTIONS

**39334**

LIFTMOORE CRANE 2550XP 12-20 KTG

Proportional wireless controls

Includes 25 Ft. CAN cable and 12V DC lighter port charger

WEIGHT: Shipping 1,620 Lbs. / Actual 1,365 Lbs.

##### CONTROL OPTIONS

Kit for remote control of truck engine from crane control. Features include engine start and stop, engage high idle, and additional control for auxiliary equipment

**SPECIFY CHASSIS AT TIME OF ORDER - COMPONENT 28793**

##### LED BOOM TIP LIGHTS (INSTALLED)

**INST-2029**

INSTALL 29602 KIT, LIGHT LED H

Includes two self-leveling LED boom tip lights rated at 2,100 lumens each

##### RECOMMENDED ACCESSORIES

BOOM REST - See page 66 and 67

MOUNTING PLATE 31821 - See page 78

25K PEDESTAL 32624 - See page 77

25K OUTRIGGER - See page 71 and 72

## **HYDRAULIC POWERED CRANES**

### **Full Power Boom Extension, Wireless Control, Planetary Gear Winch**

#### **MODEL 6040DX WP**

##### **SPECIFICATIONS**

Moment Rating: 40,000 Ft.-Lbs.

Maximum Capacity: 6,000 Lbs. at 6.7 Ft. load radius

Winch: Planetary gears, single line speed of 45 FPM at 8 GPM

Control System: 12V proportional

Control Type: Wireless remote control with E-Stop and audible signal function

Wire Rope: Galvanized 6X36WS EIP, 5/16 In. with 10,540 Lb. breaking strength

Wire rope: 6040DX-22 includes 90 Ft. / 6040DX-30 includes 115 Ft.

Travel Block: For easy two-part line hook up, includes roller bearing swivel safety hook

Rotation: Full power, unlimited by use of electric and hydraulic swivel

Boom Elevation: Full power from -5 Degrees to 75 Degrees

Boom Extension: Full power from 10 Ft. to 22 Ft. or 13 Ft. to 30 Ft.

Counterbalance (holding) valve integrated in both elevation and extension cylinders

Overload protection system

Anti-Two Block (ATB) system

Meets requirements of 29 CFR 1910.180, ANSI B30.5 and SAE J1063

Mounting plate is 17.75 In. square with a 14.75 In. square bolt pattern

##### **INCLUDED**

Battery power cable 10 GA. X 25 Ft. with toggle switch, switch bracket, terminal rings, and fuse for the required DC power connection to vehicle

Bubble level

Crane truck stability plate

Recommended installation instructions and owner's manual

##### **REQUIRED (NOT INCLUDED)**

Hydraulic power supply such as PTO, pump, reservoir, filter and hoses

Pump should supply 8 GPM at 2,750 PSI

Protected, dedicated electrical circuit providing consistent 12V DC power source

Mounting bolts Grade 8: 0.875 In. (qty. 4)

Installer responsible for meeting OSHA stability requirements of 29 CFR—1910.180(c)(1)

Boom rest

##### **RECOMMENDED**

Adjustable pressure relief and flow control valves will ensure that the optimum performance can be obtained

40K outriggers for meeting vehicle stability requirements



## HYDRAULIC POWERED CRANES

Full Power Boom Extension, Wireless Control, Planetary Gear Winch

### MODEL 6040DX WP

#### Crane Pricing and Recommended Options / Accessories

##### ITEM NO.

##### CRANE OPTIONS

**39503**



LIFTMOORE CRANE 6040DX-22 WP

Proportional wireless controls with WIFI connectivity and diagnostics

Includes 25 Ft. CAN cable and 12V DC lighter port charger

WEIGHT: Shipping 2,194 Lbs. / Actual 1,904 Lbs.

**39502**



LIFTMOORE CRANE 6040DX-30 WP

Proportional wireless controls with WIFI connectivity and diagnostics

Includes 25 Ft. CAN cable and 12V DC lighter port charger

WEIGHT: Shipping 2,521 Lbs. / Actual 2,190 Lbs.

##### CONTROL OPTIONS

Kit for remote control of truck engine from crane control. Features include engine start and stop, engage high idle, and additional control for auxiliary equipment

**SPECIFY CHASSIS AT TIME OF ORDER - COMPONENT 28793**

##### LED BOOM TIP LIGHTS (INSTALLED)

**INST-2029**

INSTALL 29602 KIT, LIGHT LED H

Includes two self-leveling LED boom tip lights rated at 2,100 lumens each

##### RECOMMENDED ACCESSORIES

BOOM REST - See page 66 and 67

MOUNTING PLATE 22136 - See page 78

40K PEDESTAL 23176 - See page 77

40K OUTRIGGER - See page 73

## **HYDRAULIC POWERED CRANES**

### **Full Power Boom Extension, Wireless Control, Planetary Gear Winch**

#### **MODEL 8045DX WP**

##### **SPECIFICATIONS**

Moment Rating: 45,000 Ft.-Lbs.

Maximum Capacity: 8,000 Lbs. at 4 Ft. load radius

Winch: Planetary gears, single line speed of 56 FPM at 8 GPM

Control System: 12V proportional

Control Type: Wireless remote control with E-Stop and audible signal function

Wire Rope: Galvanized Aircraft Cable, 3/8 In. with 14,400 Lb. breaking strength  
8045DX-22 includes 95 Ft. and 8045DX-30 includes 115 Ft.

Travel Block: For easy two-part line hook up, includes ball bearing swivel safety hook

Rotation: Full power, unlimited by use of dual-pole electric and hydraulic swivel

Boom Elevation: Full power from -5 Degrees to 75 Degrees

Boom Extension: Full power from 10 Ft. to 22 Ft. or 13 Ft. to 30Ft.

Counterbalance (holding) valve integrated in both elevation and extension cylinders

Overload protection system

Anti-Two Block (ATB) system

Meets requirements of 29 CFR 1910.180, ANSI B30.5 and SAE J1063

Mounting plate is 17.5 In. square with a 14.75 In. square bolt pattern

##### **INCLUDED**

Battery power cable 10 GA. X 25 Ft. with toggle switch, switch bracket, terminal rings,  
and fuse for the required DC power connection to vehicle

Bubble level

Crane truck stability plate

Recommended installation instructions and owner's manual

##### **REQUIRED (NOT INCLUDED)**

Hydraulic power supply such as PTO, pump, reservoir, filter and hoses

Pump should supply 8 GPM at 2,750 PSI

Protected, dedicated electrical circuit providing consistent 12V DC power source

Mounting bolts Grade 8: 0.875 In. (qty. 4)

Installer responsible for meeting OSHA stability requirements of 29 CFR—1910.180(c)(1)

Boom rest

##### **RECOMMENDED**

Adjustable pressure relief and flow control valves will ensure that the optimum  
performance can be obtained

45K outriggers for meeting vehicle stability requirements

## HYDRAULIC POWERED CRANES

Full Power Boom Extension, Wireless Control, Planetary Gear Winch

### MODEL 8045DX WP

#### Crane Pricing and Recommended Options / Accessories

##### ITEM NO.

##### CRANE OPTIONS

39490



LIFTMOORE CRANE 8045DX-22 WP

Proportional wireless controls with WIFI connectivity and diagnostics

Includes 25 Ft. CAN cable and 12V DC lighter port charger

WEIGHT: Shipping 2,223Lbs. / Actual 1,926 Lbs.

##### CRANE OPTIONS

39489



LIFTMOORE CRANE 8045DX-30 WP

Proportional wireless controls with WIFI connectivity and diagnostics

Includes 25 Ft. CAN cable and 12V DC lighter port charger

WEIGHT: Shipping 2,550 Lbs. / Actual 2,212 Lbs.

##### CONTROL OPTIONS

Kit for remote control of truck engine from crane control. Features include engine start and stop, engage high idle, and additional control for auxiliary equipment

##### SPECIFY CHASSIS AT TIME OF ORDER - COMPONENT 28793

INST-2009

Kit for monitoring chassis stability

##### LED BOOM TIP LIGHTS (INSTALLED)

INST-2029

INSTALL 29602 KIT, LIGHT LED H

Includes two self-leveling LED boom tip lights rated at 2,100 lumens each

##### RECOMMENDED ACCESSORIES

BOOM REST - See page 66 and 67

MOUNTING PLATE 29925 - See page 78

45K PEDESTAL 29924 - See page 77

45K OUTRIGGER - See page 74

# **HYDRAULIC POWERED CRANES**

## **Full Power Boom Extension, Wireless Control, Planetary Gear Winch**

### **MODEL 60100DX WP**

#### **SPECIFICATIONS**

Moment Rating: 60,000 Ft.-Lbs.

Maximum Capacity: 10,000 Lbs. at 6 Ft. load radius

Winch: Planetary gears, single line speed of 45 FPM at 8 GPM

Control System: 12V proportional

Control Type: Wireless remote control with E-Stop and audible signal function

Wire Rope: Galvanized Aircraft Cable, 7/16 In. x 135 Ft. with 17,600 Lb. breaking strength

Travel Block: For easy two-part line hook up, includes ball bearing swivel safety hook

Rotation: Full power, unlimited by use of electric and hydraulic swivel

Boom Elevation: Full power from -5 Degrees to 75 Degrees

Boom Extension: Full power from 12 Ft. to 24 Ft. or 15 Ft. to 30 Ft.

Counterbalance (holding) valve integrated in both elevation and extension cylinders

Overload protection system

Anti-Two Block (ATB) system

Meets requirements of 29 CFR 1910.180, ANSI B30.5 and SAE J1063

Mounting plate is 21 In. square with a 15.5 In. x 18.5 In. bolt pattern

#### **INCLUDED**

Battery power cable 10 GA. X 25 Ft. with toggle switch, switch bracket, terminal rings, and fuse for the required DC power connection to vehicle

Bubble level

Crane truck stability plate

Recommended installation instructions and owner's manual

#### **REQUIRED (NOT INCLUDED)**

Hydraulic power supply such as PTO, pump, reservoir, filter and hoses

Pump should supply 8 GPM at 2,750 PSI

Protected, dedicated electrical circuit providing consistent 12V DC power source

Mounting bolts Grade 8: 1.25 In. (qty. 4)

Installer responsible for meeting OSHA stability requirements of 29 CFR—1910.180(c)(1)

Boom rest

#### **RECOMMENDED**

Adjustable pressure relief and flow control valves will ensure that the optimum performance can be obtained

72K outriggers for meeting vehicle stability requirements

## HYDRAULIC POWERED CRANES

Full Power Boom Extension, Wireless Control, Planetary Gear Winch

### MODEL 60100DX WP

#### Crane Pricing and Recommended Options / Accessories

##### ITEM NO.

##### CRANE OPTIONS

39487



LIFTMOORE CRANE 60100DX-24 WP

Proportional wireless controls with WIFI connectivity and diagnostics

Includes 25 Ft. CAN cable and 12V DC lighter port charger

WEIGHT: Shipping 2,927 Lbs. / Actual 2,579 Lbs.

39488



LIFTMOORE CRANE 60100DX-30 WP

Proportional wireless controls with WIFI connectivity and diagnostics

Includes 25 Ft. CAN cable and 12V DC lighter port charger

WEIGHT: Shipping 3,315 Lbs. / Actual 2,980 Lbs.

##### CONTROL OPTIONS

Kit for remote control of truck engine from crane control. Features include engine start and stop, engage high idle, and additional control for auxiliary equipment

**SPECIFY CHASSIS AT TIME OF ORDER - COMPONENT 28793**

INST-2009

Kit for monitoring chassis stability

##### LED BOOM TIP LIGHTS (INSTALLED)

INST-2029

INSTALL 29602 KIT, LIGHT LED H

Includes two self-leveling LED boom tip lights rated at 2,100 lumens each

##### RECOMMENDED ACCESSORIES

BOOM REST - See page 66 and 67

MOUNTING PLATE 21954 - See page 78

72K PEDESTAL 22807 - See page 77

72K OUTRIGGER - See page 76

## **HYDRAULIC POWERED CRANES**

### **Full Power Boom Extension, Wireless Control, Planetary Gear Winch**

#### **MODEL 72100DX WP**

##### **SPECIFICATIONS**

Moment Rating: 72,000 Ft.-Lbs.

Maximum Capacity: 10,000 Lbs. at 7.2 Ft. load radius

Winch: Planetary gears, single line speed of 45 FPM at 8 GPM

Control System: 12V proportional

Control Type: Wireless remote control with E-Stop and audible signal function

Wire Rope: Galvanized Aircraft Cable, 7/16 In. with 17,600 Lb. breaking strength

Wire Rope: 72100DX-24 WP includes 100 Ft. / 72100DX-30 WP includes 135 Ft.

Travel Block: For easy two-part line hook up, includes ball bearing swivel safety hook

Rotation: Full power, unlimited by use of electric and hydraulic swivel

Boom Elevation: Full power from -5 Degrees to 75 Degrees

Boom Extension: Full power from 11 Ft. to 24 Ft. or 15 Ft. to 30 Ft.

Counterbalance (holding) valve integrated in both elevation and extension cylinders

Overload protection system

Anti-Two Block (ATB) system

Meets requirements of 29 CFR 1910.180, ANSI B30.5 and SAE J1063

Mounting plate is 21 In. square with a 15.5 In. x 18.5 In. bolt pattern

##### **INCLUDED**

Battery power cable 10 GA. X 25 Ft. with toggle switch, switch bracket, terminal rings, and fuse for the required DC power connection to vehicle

Bubble level

Crane truck stability plate

Recommended installation instructions and owner's manual

##### **REQUIRED (NOT INCLUDED)**

Hydraulic power supply such as PTO, pump, reservoir, filter and hoses

Pump should supply 8 GPM at 2,750 PSI

Protected, dedicated electrical circuit providing consistent 12V DC power source

Mounting bolts Grade 8: 1.25 In. (qty. 4)

Installer responsible for meeting OSHA stability requirements of 29 CFR—1910.180(c)(1)

Boom rest

##### **RECOMMENDED**

Adjustable pressure relief and flow control valves will ensure that the optimum performance can be obtained

72K outriggers for meeting vehicle stability requirements

# HYDRAULIC POWERED CRANES

## Full Power Boom Extension, Wireless Control, Planetary Gear Winch

### MODEL 72100DX WP

#### Crane Pricing and Recommended Options / Accessories

##### ITEM NO.

##### CRANE OPTIONS

**39479**



LIFTMOORE CRANE 72100DX-24 WP

Proportional wireless controls with WIFI connectivity and diagnostics

Includes 25 Ft. CAN cable and 12V DC lighter port charger

WEIGHT: Shipping 3,145 Lbs. / Actual 2,580 Lbs.

**39483**



LIFTMOORE CRANE 72100DX-30 WP

Proportional wireless controls with WIFI connectivity and diagnostics

Includes 25 Ft. CAN cable and 12V DC lighter port charger

WEIGHT: Shipping 3,375 Lbs. / Actual 2,985 Lbs.

##### CONTROL OPTIONS

Kit for remote control of truck engine from crane control. Features include engine start and stop, engage high idle, and additional control for auxiliary equipment

**SPECIFY CHASSIS AT TIME OF ORDER - COMPONENT 28793**

**INST-2009**

Kit for monitoring chassis stability

##### LED BOOM TIP LIGHTS (INSTALLED)

**INST-2029**

INSTALL 29602 KIT, LIGHT LED H

Includes two self-leveling LED boom tip lights rated at 2,100 lumens each

##### RECOMMENDED ACCESSORIES

BOOM REST 26718 or 22842 - See page 66 and 67

MOUNTING PLATE 21954 - See page 78

72K PEDESTAL 22807 - See page 77

72K OUTRIGGER - See page 76

# **HYDRAULIC POWERED CRANES**

## **Power and Manual Boom Extension, Pendant Control**

### **MODEL 1032XP**

#### **SPECIFICATIONS**

Moment Rating: 10,000 Ft.-Lbs.

Maximum Capacity: 3,200 Lbs. at 3 Ft. load radius

Winch: Planetary gears, single line speed of 20 FPM at 3 GPM

Control System: 12V proportional

Control Type: Remote pendant control with E-Stop and audible signal function

Wire Rope: Galvanized Aircraft Cable, 1/4 In. x 62 Ft. with 7,000 Lb. breaking strength

Travel Block: For easy two-part line hook up, includes swivel safety hook

Rotation: Full power, 365 degrees limited

Boom Elevation: Full power from –5 Degrees to 75 Degrees

Boom Extension: Power from 7 Ft. to 11 Ft. and manual from 11 Ft. to 15 Ft.

Counterbalance (holding) valve integrated in both elevation and extension cylinders

Overload protection system

Anti-Two Block (ATB) system

Meets requirements of 29 CFR 1910.180, ANSI B30.5 and SAE J1063

Mounting plate is 15 In. square with a 12 In. square bolt pattern

#### **INCLUDED**

Battery power cable 10 GA. X 25 Ft. with toggle switch, switch bracket, terminal rings, and fuse for the required DC power connection to vehicle

Mounting bolts Grade 8: 0.50 In. X 2.50 In. (qty. 4)

Bubble level

Crane truck stability plate

Recommended installation instructions and owner's manual

#### **REQUIRED (NOT INCLUDED)**

Hydraulic power supply such as PTO, pump, reservoir, filter and hoses

Pump should supply 2 GPM at 2,500 PSI

Protected, dedicated electrical circuit providing consistent 12V DC power source

Installer responsible for meeting OSHA stability requirements of 29 CFR—1910.180(c)(1)

Boom rest

#### **RECOMMENDED**

Adjustable pressure relief and flow control valves will ensure that the optimum performance can be obtained

12K outriggers for meeting vehicle stability requirements



**HYDRAULIC POWERED CRANES**  
**Power and Manual Boom Extension, Pendant Control**  
**MODEL 1032XP**

**Crane Pricing and Recommended Options / Accessories**

**ITEM NO.**

**CRANE OPTIONS**

**39256** LIFTMOORE CRANE 1032XP-15 HE  
WEIGHT: Shipping 930 Lbs. / Actual 724 Lbs.

**LED BOOM TIP LIGHTS (INSTALLED)**

**INST-2017** INSTALL 29313 KIT, LIGHT LED H  
Includes two self-leveling LED boom tip lights rated at 2,100 lumens each

**RECOMMENDED ACCESSORIES**

BOOM REST 27860 or 22158 - See page 66 and 67

MOUNTING PLATE 30685 - See page 78

12K PEDESTAL 18375 or 22796 - See page 77

12K JACKSTAND - See page 68

12K OUTRIGGER (manual type) - See page 70

25K OUTRIGGER (hydraulic type) - See page 72

# **HYDRAULIC POWERED CRANES**

## **Power and Manual Boom Extension, Pendant Control**

### **MODEL 1640XP**

#### **SPECIFICATIONS**

Moment Rating: 16,000 Ft.-Lbs.

Maximum Capacity: 4,000 Lbs. at 4 Ft. load radius

Winch: Planetary gears, single line speed of 15 FPM at 3 GPM

Control System: 12V proportional

Control Type: Remote pendant control with E-Stop and audible signal function

Wire Rope: Galvanized Aircraft Cable, 1/4 In. x 100 Ft. with 7,000 Lb. breaking strength

Travel Block: For easy two-part line hook up, includes swivel safety hook

Rotation: Full power, 365 degrees limited

Boom Elevation: Full power from -5 Degrees to 75 Degrees

Boom Extension: 1640XP-16 Power from 8 Ft. to 12 Ft. and manual from 12 Ft. to 16 Ft.

Boom Extension: 1640XP-20 Power from 10 Ft. to 16 Ft. and manual from 16 Ft. to 20 Ft.

Counterbalance (holding) valve integrated in both elevation and extension cylinders

Overload protection system

Anti-Two Block (ATB) system

Meets requirements of 29 CFR 1910.180, ANSI B30.5 and SAE J1063

Mounting plate is 15 In. square with a 12 In. square bolt pattern

#### **INCLUDED**

Battery power cable 10 GA. X 25 Ft. with toggle switch, switch bracket, terminal rings, and fuse for the required DC power connection to vehicle

Mounting bolts Grade 8: 0.75 In. X 3.00 In. (qty. 4)

Bubble level

Crane truck stability plate

Recommended installation instructions and owner's manual

#### **REQUIRED (NOT INCLUDED)**

Hydraulic power supply such as PTO, pump, reservoir, filter and hoses

Pump should supply 3 GPM at 2,750 PSI

Protected, dedicated electrical circuit providing consistent 12V DC power source

Installer responsible for meeting OSHA stability requirements of 29 CFR—1910.180(c)(1)

Boom rest

#### **RECOMMENDED**

Adjustable pressure relief and flow control valves will ensure that the optimum performance can be obtained

18K outriggers for meeting vehicle stability requirements

**HYDRAULIC POWERED CRANES**  
**Power and Manual Boom Extension, Pendant Control**  
**MODEL 1640XP**

**Crane Pricing and Recommended Options / Accessories**

**ITEM NO.**

**CRANE OPTIONS**

**39265** LIFTMOORE CRANE 1640XP-16 HE  
WEIGHT: Shipping 1,035 Lbs. / Actual 920 Lbs.

**39436** LIFTMOORE CRANE 1640XP-20 HE  
WEIGHT: Shipping 1,065 Lbs. / Actual 965 Lbs.

**LED BOOM TIP LIGHTS (INSTALLED)**

**INST-2017** INSTALL 29313 KIT, LIGHT LED H  
Includes two self-leveling LED boom tip lights rated at 2,100 lumens each

**RECOMMENDED ACCESSORIES**

BOOM REST 27860 or 22158 - See page 66 and 67

MOUNTING PLATE 16698 - See page 78

16K PEDESTAL 34076 - See page 77

18K OUTRIGGER (manual type) - See page 70

25K OUTRIGGER (hydraulic type) - See page 72

# **HYDRAULIC POWERED CRANES**

## **Power and Manual Boom Extension, Pendant Control**

### **MODEL 2550XP**

#### **SPECIFICATIONS**

Moment Rating: 25,000 Ft.-Lbs.

Maximum Capacity: 5,000 Lbs. at 5 Ft. load radius

Winch: Worm gear, single line speed of 20 FPM at 6 GPM

Control System: 12V proportional

Control Type: Remote pendant control with E-Stop and audible signal function

Wire Rope: Galvanized Aircraft Cable, 5/16 In. x 80 Ft. with 9,800 Lb. breaking strength

Travel Block: For easy two-part line hook up, includes roller bearing swivel safety hook

Rotation: Full power, unlimited by use of electric and hydraulic swivel

Boom Elevation: Full power from –5 Degrees to 75 Degrees

Boom Extension: Power from 10 Ft. to 16 Ft. and manual from 16 Ft. to 20 Ft.

Counterbalance (holding) valve integrated in both elevation and extension cylinders

Overload protection system

Anti-Two Block (ATB) system

Meets requirements of 29 CFR 1910.180, ANSI B30.5 and SAE J1063

Mounting plate is 16.75 In. square with a 14.75 In. square bolt pattern

#### **INCLUDED**

Battery power cable 10 GA. X 25 Ft. with toggle switch, switch bracket, terminal rings, and fuse for the required DC power connection to vehicle

Bubble level

Crane truck stability plate

Recommended installation instructions and owner's manual

#### **REQUIRED (NOT INCLUDED)**

Hydraulic power supply such as PTO, pump, reservoir, filter and hoses

Pump should supply 6 GPM at 2,750 PSI

Protected, dedicated electrical circuit providing consistent 12V DC power source

Mounting bolts Grade 8: 0.875 In. (qty. 4)

Installer responsible for meeting OSHA stability requirements of 29 CFR—1910.180(c)(1)

Boom rest

#### **RECOMMENDED**

Adjustable pressure relief and flow control valves will ensure that the optimum performance can be obtained

25K outriggers for meeting vehicle stability requirements

**HYDRAULIC POWERED CRANES**  
**Power and Manual Boom Extension, Pendant Control**  
**MODEL 2550XP**

**Crane Pricing and Recommended Options / Accessories**

**ITEM NO.**

**CRANE OPTIONS**

**39327** LIFTMOORE CRANE 2550XP-20 HE  
WEIGHT: Shipping 1,608 Lbs. / Actual 1,302 Lbs.

**LED BOOM TIP LIGHTS (INSTALLED)**

**INST-2017** INSTALL 29313 KIT, LIGHT LED H  
Includes two self-leveling LED boom tip lights rated at 2,100 lumens each

**RECOMMENDED ACCESSORIES**

BOOM REST - See page 66 and 67  
MOUNTING PLATE 31821 - See page 78  
25K PEDESTAL 32624 - See page 77  
25K OUTRIGGER - See page 71 and 72

# **HYDRAULIC POWERED CRANES**

## **Power and Manual Boom Extension, Pendant Control**

### **MODEL 3660XP**

#### **SPECIFICATIONS**

Moment Rating: 36,000 Ft.-Lbs.

Maximum Capacity: 6,000 Lbs. at 6 Ft. load radius

Winch: Worm gear, single line speed of 19 FPM at 6 GPM

Control System: 12V proportional

Control Type: Remote pendant control with E-Stop and audible signal function

Wire Rope: Galvanized Aircraft Cable, 3/8 In. x 95 Ft. with 14,400 Lb. breaking strength

Travel Block: For easy two-part line hook up, includes roller bearing swivel safety hook

Rotation: Full power, unlimited by use of electric and hydraulic swivel

Boom Elevation: Full power from –5 Degrees to 75 Degrees

Boom Extension: Power from 10 Ft. to 16 Ft. and manual from 16 Ft. to 20 Ft.

Counterbalance (holding) valve integrated in both elevation and extension cylinders

Overload protection system

Anti-Two Block (ATB) system

Meets requirements of 29 CFR 1910.180, ANSI B30.5 and SAE J1063

Mounting plate is 16.75 In. square with a 14.75 In. square bolt pattern

#### **INCLUDED**

Battery power cable 10 GA. X 25 Ft. with toggle switch, switch bracket, terminal rings, and fuse for the required DC power connection to vehicle

Bubble level

Crane truck stability plate

Recommended installation instructions and owner's manual

#### **REQUIRED (NOT INCLUDED)**

Hydraulic power supply such as PTO, pump, reservoir, filter and hoses

Pump should supply 6 GPM at 2,750 PSI

Protected, dedicated electrical circuit providing consistent 12V DC power source

Mounting bolts Grade 8: 0.875 In. (qty. 4)

Installer responsible for meeting OSHA stability requirements of 29 CFR—1910.180(c)(1)

Boom rest

#### **RECOMMENDED**

Adjustable pressure relief and flow control valves will ensure that the optimum performance can be obtained

40K outriggers for meeting vehicle stability requirements

**HYDRAULIC POWERED CRANES**  
**Power and Manual Boom Extension, Pendant Control**  
**MODEL 3660XP**

**Crane Pricing and Recommended Options / Accessories**

**ITEM NO.**

**CRANE OPTIONS**

**39465** LIFTMOORE CRANE 3660XP-20 HE  
WEIGHT: Shipping 1,775 Lbs. / Actual 1,532 Lbs.

**LED BOOM TIP LIGHTS (INSTALLED)**

**INST-2017** INSTALL 29313 KIT, LIGHT LED H  
Includes two self-leveling LED boom tip lights rated at 2,100 lumens each

**RECOMMENDED ACCESSORIES**

BOOM REST - See page 66 and 67  
MOUNTING PLATE 31821 - See page 78  
36K PEDESTAL 32624 - See page 77  
40K OUTRIGGER - See page 73

# **HYDRAULIC POWERED CRANES**

## **Power and Manual Boom Extension, Pendant Control**

### **MODEL 5080XP**

#### **SPECIFICATIONS**

Moment Rating: 50,000 Ft.-Lbs.

Maximum Capacity: 8,000 Lbs. at 6.25 Ft. load radius

Winch: Worm gear, single line speed of 19 FPM at 8 GPM

Control System: 12V proportional

Control Type: Remote pendant control with E-Stop and audible signal function

Wire Rope: Galvanized Aircraft Cable, 3/8 In. x 95 Ft. with 14,400 Lb. breaking strength

Travel Block: For easy two-part line hook up, includes roller bearing swivel safety hook

Rotation: Full power, unlimited by use of electric and hydraulic swivel

Boom Elevation: Full power from –5 Degrees to 75 Degrees

Boom Extension: Power from 10 Ft. to 16 Ft. and manual from 16 Ft. to 20 Ft.

Counterbalance (holding) valve integrated in both elevation and extension cylinders

Overload protection system

Anti-Two Block (ATB) system

Meets requirements of 29 CFR 1910.180, ANSI B30.5 and SAE J1063

Mounting plate is 16.75 In. square with a 14.75 In. square bolt pattern

#### **INCLUDED**

Battery power cable 10 GA. X 25 Ft. with toggle switch, switch bracket, terminal rings, and fuse for the required DC power connection to vehicle

Bubble level

Crane truck stability plate

Recommended installation instructions and owner's manual

#### **REQUIRED (NOT INCLUDED)**

Hydraulic power supply such as PTO, pump, reservoir, filter and hoses

Pump should supply 8 GPM at 2,750 PSI

Protected, dedicated electrical circuit providing consistent 12V DC power source

Mounting bolts Grade 8: 1.00 In. (qty. 4)

Installer responsible for meeting OSHA stability requirements of 29 CFR—1910.180(c)(1)

Boom rest

#### **RECOMMENDED**

Adjustable pressure relief and flow control valves will ensure that the optimum performance can be obtained

50K outriggers for meeting vehicle stability requirements



**HYDRAULIC POWERED CRANES**  
**Power and Manual Boom Extension, Pendant Control**  
**MODEL 5080XP**

**Crane Pricing and Recommended Options / Accessories**

**ITEM NO.**

**CRANE OPTIONS**

**39399** LIFTMOORE CRANE 5080XP-20 HE  
WEIGHT: Shipping 1,915 Lbs. / Actual 1,692 Lbs.

**LED BOOM TIP LIGHTS (INSTALLED)**

**INST-2017** INSTALL 29313 KIT, LIGHT LED H  
Includes two self-leveling LED boom tip lights rated at 2,100 lumens each

**RECOMMENDED ACCESSORIES**

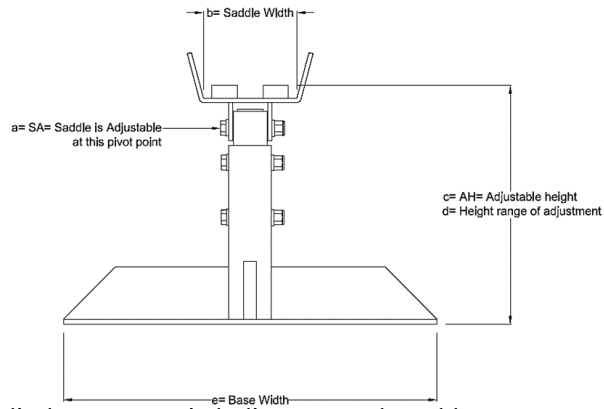
BOOM REST - See page 66 and 67  
MOUNTING PLATE 33905 - See page 78  
50K PEDESTAL 33654 - See page 77  
50K OUTRIGGER - See page 75

## BOOM RESTS

A boom rest is required for all power rotation cranes. Boom rests are designed to hold the boom in a nearly horizontal position. A loop is included for attaching the hook except on 5,000 lbs. capacity and above cranes as these have a hook on the boom. These boom rests are designed for typical body configurations. For custom applications, please contact Liftmoore. Sufficient reinforcement of the body or flat bed is required.

### First Line Description - Service Body Mount

- a = SA = Saddle is Adjustable to match the boom angle  
b = 5.0" = The maximum boom width that the saddle is designed to handle  
c = AH = Adjustable height  
d = 14"-19" = The height range between which the saddle is adjustable

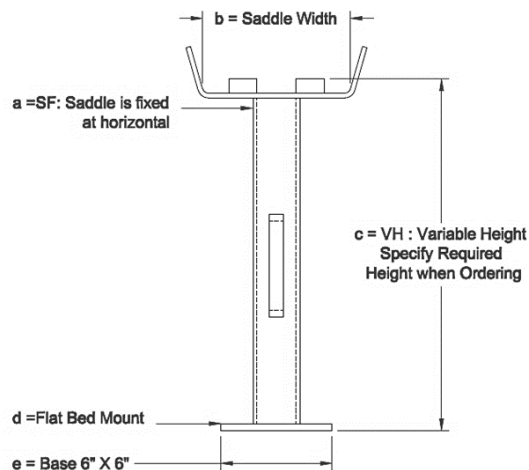


### Second Line Description - Service Body Mount

- e = BASE WIDTH = 20.0" - Length of the angle iron of the base that corresponds to the compartment top  
206REL - 4000 Crane models or range of crane models that works with the boom rest  
W/BC - For use when crane will be stowed above horizontal (over bottle compartment)

### First Line Description - Flat Bed Mount

- a = SF = Saddle is Fixed assuming horizontal stowing of the boom  
b = 5.0" = The maximum boom width that the saddle is designed to handle  
c = VH = Variable height, to be determined at time of order  
d = FLAT BED = Designates these are designed for use on other than a compartment top



### Second Line Description - Flat Bed Mount

- e = BASE 6" X 6" = The dimensions of the base plate of the boom rest are noted  
206REL - 4000 = Crane models or range of crane models the boom rest is designed for

Model	2000	206R 4000 1640	206REL	208	2700 3200 1032	2010 3612REE	3612X	5000 2550	6036 3660	5080	4064 8045	60100 72100
Bottom of base to bottom of boom	10.63"	17.25"	18.00"	18.6"	17.4"	15.25"	14.9"	18.5"	18.16"	22.38"	16.5"	21.5"

## BOOM RESTS

### SERVICE BODY MOUNT

#### ITEM NO.

- 27860** REST, BOOM SA 5.0" AH 14"-19"  
BASE WIDTH = 20.0" 206-4000  
For use with models 206REL, 208EL, 2700AR, 2010, 3200, 1032, 3612, 4000, 1640
- 27818** REST, BOOM SA 7.0" AH 18"-27"  
BASE WIDTH = 22.0" 5000-60100  
For use with models 5000, 2550, 3055, 6036, 3660, 4064, 8045, 5080, and 60100
- 24913** REST, BOOM SA 7.0" AH 23"-37"  
BASE WIDTH = 22.5" 5000-60100 W/BC  
For use with models 5000, 2550, 3055, 6036, 3660, 4064, 8045, 5080, and 60100  
For use when cranes are stowed above horizontal
- 26718** REST, BOOM SA 8.0" AH 25"-37"  
BASE WIDTH=22.5" 72100 W/BC  
For use with Model 72100 when stowed above horizontal

### FLAT BED MOUNT - FOR USE WITH CRANE MOUNTED ON PEDESTAL

(Required height must be specified when ordering)

- 22167** REST, BOOM SF 3" VH FLAT BED  
BASE 6" X 6" 2000/206R  
For use with models 2000 and 206R (not 206REL)
- 22158** REST, BOOM SF 5.0" VH FLAT BED  
BASE 6" X 6" 206REL - 4000  
For use with Models 206REL, 208EL, 2700AR, 2010, 3200, 1032, 3612, 4000, 1640
- 24589** REST, BOOM SF 7.0" VH FLAT BED  
BASE 6" X 6" 5000 - 60100  
For use with Models 5000, 2550, 3055, 6036, 3660, 4064, 8045, 5080, and 60100
- 22842** REST, BOOM SF 8.0" VH FLAT BED  
BASE 6" X 6" 72100  
For use with Model 72100

## JACKSTANDS

NOTE: 12K,18K,25K & 36K refer to the crane moment rating in 1,000 Ft.-Lbs.

**ITEM NO.**

- |              |   |
|--------------|---|
| <b>30328</b> | JACKSTAND, 12K OVERCENTER<br>RIGHT SIDE   |
| <b>38638</b> | JACKSTAND, 12K OVERCENTER<br>LEFT SIDE  |
| <b>38518</b> | JACKSTAND, 12K OVERCENTER VH<br>HEIGHT UNDER BODY = ____" L.S.<br>Specify required underbody height when ordering |
| <b>31131</b> | JACKSTAND, 12K DROP DOWN TUBE<br>w/SCREW BASE - PERMANENT MOUNT   |
| <b>30329</b> | JACKSTAND, 36K OVERCENTER<br>RIGHT SIDE   |
| <b>38658</b> | JACKSTAND, 36K OVERCENTER<br>LEFT SIDE  |
| <b>38517</b> | JACKSTAND, 36K OVERCENTER VH<br>HEIGHT UNDER BODY = ____" L.S.<br>Specify required underbody height when ordering |

## OUTRIGGER DESCRIPTION & DEFINITION

Outrigger descriptions are used to indicate how the outrigger is configured  
Understanding this will assist you in selecting the correct outrigger

### Sample Description and its Meaning

## OUTRIGGER, 40K 36CHOHD-12SHOHD

40K Indicates the capacity of the Outrigger Package (i.e. 40,000 Ft.-Lbs.)

36 Indicates the movement in inches Outrigger extends

C Indicates the side of truck movement occurs on (C = Curb Side)

H Indicates the type of movement (H = Hydraulic, M = Manual, FX = Fixed)

O Indicates direction of movement (O = Out)

H Indicates type of Jack (H = Hydraulic, C = Crank, NJ = No Jack)

D Indicates direction of movement (D = Down)

12 Indicates the movement in inches Outrigger extends

S Indicates the side of truck movement occurs on (S = Street Side)

H Indicates the type of movement (H = Hydraulic, M = Manual, FX = Fixed)

O Indicates direction of movement (O = Out)

H Indicates type of Jack (H = Hydraulic, C = Crank, NJ = No Jack)

D Indicates direction of movement (D = Down)

## OUTRIGGERS

### Up to 12,000 Ft. - Lbs. Cranes Center Tube Dimension 2.5" x 5.0"

ITEM NO.

**Manual In / Out and Manual Crank Up / Down Operation**

- |              |   |
|--------------|---|
| <b>38885</b> | OUTRIGGER, 12K 30CMOCD-SFXNJ<br>WEIGHT: Shipping 235 lbs.    Actual 175 lbs.                    |
| <b>38860</b> | OUTRIGGER, 12K 25CMOCD-15SMOCD (79" Body Width)<br>WEIGHT: Shipping 265 lbs.    Actual 185 lbs. |
| <b>38862</b> | OUTRIGGER, 12K 30CMOCD-15SMOCD (89" Body Width)<br>WEIGHT: Shipping 285 lbs.    Actual 175 lbs. |
| <b>38851</b> | OUTRIGGER, 12K 30CMOCD-15SMOCD (94" Body Width)<br>WEIGHT: Shipping 285 lbs.    Actual 178 lbs. |

### Up to 18,000 Ft. - Lbs. Cranes Center Tube Dimension 4.0" x 6.0"

**Manual In / Out and Manual Crank Up / Down Operation**

- |              |  |
|--------------|--|
| <b>39481</b> | OUTRIGGER, 18K 36CMOCD-12SMOCD (95" Body Width)<br>93.5" OAW BOLT ON JACKS<br>WEIGHT: Shipping 315 lbs.    Actual 275 lbs. |
|--------------|--|

## OUTRIGGERS

Up to 25,000 Ft. - Lbs. Cranes  
Center Tube Dimension 5.0" x 7.0"

ITEM NO.

**Manual In / Out and Manual Crank Up / Down Operation**

- |              |  |
|--------------|--|
| <b>38426</b> | OUTRIGGER, 25K 36CMOCD-12SMOCD (90" Body Width)<br>WEIGHT: Shipping 515 lbs. Actual 344 lbs.   |
| <b>38427</b> | OUTRIGGER, 25K 36CMOCD-12SMOCD (95" Body Width)<br>WEIGHT: Shipping 520 lbs. Actual 354 lbs.   |
| <b>38962</b> | OUTRIGGER, 25K 24CMOCD-24SMOCD (95" Body Width)<br>WEIGHT: Shipping 525 lbs. Actual 355 lbs.<br>NOTE: DESIGNED FOR CENTER MOUNTED APPLICATIONS |

## OUTRIGGERS

**Up to 25,000 Ft. - Lbs. Cranes**  
**Center Tube Dimension 5.0" x 7.0"**

### ITEM NO.

#### Manual In / Out and Hydraulic Up / Down Operation

These outriggers are offered with manual pull out and hydraulic up/down jacks.  
The outrigger package includes diverter valve for selecting either outrigger or crane operation, lever operated directional control valve with hoses and fittings for cylinder to control valve only.

**38461** OUTRIGGER, 25K 36CMOHD-12SMOHD (95" Body Width)  
WEIGHT: Shipping 585 lbs. Actual 429 lbs.

**38443** OUTRIGGER, 25K 24CMOHD-24SMOHD (95" Body Width)  
WEIGHT: Shipping 585 lbs. Actual 430 lbs.  
NOTE: DESIGNED FOR CENTER MOUNTED APPLICATIONS

#### Hydraulic In / Out and Hydraulic Up / Down Operation

These outriggers are offered with hydraulic in/out extension and hydraulic up/down jacks.  
The outrigger package includes diverter valve for selecting either outrigger or crane operation, lever operated directional control valve with hoses and fittings for cylinder to control valve only.

**39276** OUTRIGGER, 25K 36CHOHD-12SHOHD (95" Body Width)  
WEIGHT: Shipping 590 lbs. Actual 476 lbs.

**39223** OUTRIGGER, 25K 20CHOHD-20SHOHD (95" Body Width)  
WEIGHT: Shipping 590 lbs. Actual 483 lbs.  
NOTE: DESIGNED FOR CENTER MOUNTED APPLICATIONS

**39278** OUTRIGGER, 25K 36CHOHD-SFXHD (95" Body Width)  
WEIGHT: Shipping 590 lbs. Actual 405 lbs.  
NOTE: EXTENDS CURB SIDE ONLY, STREET SIDE FIXED

**34198** KIT, OUTRIG HYD. PUMP 12V 25K+  
USE WITH HYDRAULIC OUTRIGGER

For hydraulic operation outriggers when no other hydraulic system is available. Most commonly used with a 12V DC powered crane. The pump kit includes: electric hydraulic pump with starter solenoid and control switch.



## OUTRIGGERS

**Up to 40,000 Ft. - Lbs. Cranes**  
**Center Tube Dimension 6.0" x 8.0"**

### ITEM NO.

#### Manual In / Out and Manual Crank Up / Down Operation

**38038** OUTRIGGER, 40K 36CMOCD-12SMOCD  
WEIGHT: Shipping 535 lbs. Actual 395 lbs.

**38702** OUTRIGGER, 40K 24CMOCD-24SMOCD  
WEIGHT: Shipping 565 lbs. Actual 443 lbs.

NOTE: DESIGNED FOR CENTER MOUNTED APPLICATIONS

#### Manual In / Out and Hydraulic Up / Down Operation

These outriggers are offered with manual pull out and hydraulic up/down jacks.  
The outrigger package includes diverter valve for selecting either outrigger or crane operation, lever operated directional control valve with hoses and fittings for cylinder to control valve only.

**38588** OUTRIGGER, 40K 36CMOHD-12SMOHD  
WEIGHT: Shipping 610 lbs. Actual 493 lbs.

#### Hydraulic In / Out and Hydraulic Up / Down Operation

These outriggers are offered with hydraulic in/out extension and hydraulic up/down jacks.  
The outrigger package includes diverter valve for selecting either outrigger or crane operation, lever operated directional control valve with hoses and fittings for cylinder to control valve only.

**39279** OUTRIGGER, 40K 36CHOHD-12SHOHD  
WEIGHT: Shipping 645 lbs. Actual 568 lbs.

**39227** OUTRIGGER, 40K 20CHOHD-20SHOHD  
WEIGHT: Shipping 635 lbs. Actual 525 lbs.

NOTE: DESIGNED FOR CENTER MOUNTED APPLICATIONS

**39219** OUTRIGGER, 40K 42CHOHD-SFXHD  
WEIGHT: Shipping 585 lbs. Actual 400 lbs.  
NOTE: EXTENDS CURB SIDE ONLY, STREET SIDE FIXED  
NOTE: INTERNAL HOSES FOR THE DOWN CYLINDERS

**34198** KIT, OUTRIG HYD. PUMP 12V 25K+

USE WITH HYDRAULIC OUTRIGGER

For hydraulic operation outriggers when no other hydraulic system is available. Most commonly used with a 12V DC powered crane. The pump kit includes: electric hydraulic pump with starter solenoid and control switch.

## OUTRIGGERS

Up to 45,000 Ft. - Lbs. Cranes  
Center Tube Dimension 6.0" x 8.0"

### ITEM NO.

#### Manual In / Out and Manual Crank Up / Down Operation

**39494** OUTRIGGER, 45K 42CMOCD-SFXCD

NOTE: EXTENDS CURB SIDE ONLY, STREET SIDE FIXED

#### Hydraulic In / Out and Hydraulic Up / Down Operation

This outrigger includes curbside hydraulic in/out extension and hydraulic up/down jacks.  
The outrigger package does **NOT** include diverter valve, directional control valves, hose or fittings. See valve options and kit below.

**39492** OUTRIGGER, 45K 42CHOHD-SFXHD

NOTE: EXTENDS CURB SIDE ONLY, STREET SIDE FIXED

NOTE: INTERNAL HOSES FOR THE DOWN CYLINDERS

**32332** VALVE, DIVERTER 3 WAY W/ KNOB



**23560** VALVE ASSY, 4 WAY LVR, 3 SCT

Outrigger control valves including handles, adapters, and relief valve



**34535** VALVE ASSY, 4LVR 4SCT DIV PB

Integrated valve block including outrigger control valves, handles, adapters, diverter valve, relief valve and power beyond



**34534** KIT, OUTRIG INST CHOHD-SFXHD

Installation kit including adapters, fittings and hose

**34198** KIT, OUTRIG HYD. PUMP 12V 25K+

USE WITH HYDRAULIC OUTRIGGER

For hydraulic operation outriggers when no other hydraulic system is available. Most commonly used with a 12V DC powered crane. The pump kit includes: electric hydraulic pump with starter solenoid and control switch.

## OUTRIGGERS

**Up to 50,000 Ft. - Lbs. Cranes**  
**Center Tube Dimension 7.0" x 9.0"**

### ITEM NO.

#### Manual In / Out and Manual Crank Up / Down Operation

**38312**     OUTRIGGER, 50K 36CMOCD-12SMOCD  
WEIGHT: Shipping 620 lbs.     Actual 454 lbs.

**38421**     OUTRIGGER, 50K 24CMOCD-24SMOCD  
WEIGHT: Shipping 620 lbs.     Actual 458 lbs.

NOTE: DESIGNED FOR CENTER MOUNTED APPLICATIONS

#### Manual In / Out and Hydraulic Up / Down Operation

These outriggers are offered with manual pull out and hydraulic up/down jacks.  
The outrigger package includes diverter valve for selecting either outrigger or crane operation, lever operated directional control valve with hoses and fittings for cylinder to control valve only.

**38590**     OUTRIGGER, 50K 36CMOHD-12SMOHD  
WEIGHT: Shipping 620 lbs.     Actual 531 lbs.

**39098**     OUTRIGGER, 50K 24CMOHD-24SMOHD  
WEIGHT: Shipping 625 lbs.     Actual 535 lbs.

NOTE: DESIGNED FOR CENTER MOUNTED APPLICATIONS

#### Hydraulic In / Out and Hydraulic Up / Down Operation

These outriggers are offered with hydraulic in/out extension and hydraulic up/down jacks.  
The outrigger package includes diverter valve for selecting either outrigger or crane operation, lever operated directional control valve with hoses and fittings for cylinder to control valve only.

**39282**     OUTRIGGER, 50K 36CHOHD-12SHOHD  
WEIGHT: Shipping 685 lbs.     Actual 593 lbs.

**39230**     OUTRIGGER, 50K 20CHOHD-20SHOHD  
WEIGHT: Shipping 690 lbs.     Actual 596 lbs.

NOTE: DESIGNED FOR CENTER MOUNTED APPLICATIONS

**34198**     KIT, OUTRIG HYD. PUMP 12V 25K+

USE WITH HYDRAULIC OUTRIGGER

For hydraulic operation outriggers when no other hydraulic system is available. Most commonly used with a 12V DC powered crane. The pump kit includes: electric hydraulic pump with starter solenoid and control switch.

## OUTRIGGERS

**Up to 72,000 Ft. - Lbs. Cranes**  
**Center Tube Dimension 8.0" x 10.0"**

### ITEM NO.

#### Manual In / Out and Manual Crank Up / Down Operation

**38804**     OUTRIGGER, 72K 48CMOCD-SFXCD  
WEIGHT: Shipping 625 lbs.     Actual 504 lbs.

#### Manual In / Out and Hydraulic Up / Down Operation

These outriggers are offered with manual pull out and hydraulic up/down jacks.  
The outrigger package includes diverter valve for selecting either outrigger or crane operation, lever operated directional control valve with hoses and fittings for cylinder to control valve only.

**38719**     OUTRIGGER, 72K 36CMOHD-12SMOHD  
WEIGHT: Shipping 640 lbs.     Actual 583 lbs.

#### Hydraulic In / Out and Hydraulic Up / Down Operation

These outriggers are offered with hydraulic in/out extension and hydraulic up/down jacks.  
The outrigger package includes diverter valve for selecting either outrigger or crane operation, lever operated directional control valve with hoses and fittings for cylinder to control valve only.

**39283**     OUTRIGGER, 72K 36CHOHD-12SHOHD  
WEIGHT: Shipping 725 lbs.     Actual 615 lbs.

**39229**     OUTRIGGER, 72K 20CHOHD-20SHOHD  
WEIGHT: Shipping 728 lbs.     Actual 618 lbs.

NOTE: DESIGNED FOR CENTER MOUNTED APPLICATIONS

**39402**     OUTRIGGER, 72K 42CHOHD-SFXHD  
NOTE: EXTENDS CURB SIDE ONLY, STREET SIDE FIXED  
NOTE: INTERNAL HOSES FOR THE DOWN CYLINDERS

**34198**     KIT, OUTRIG HYD. PUMP 12V 25K+  
USE WITH HYDRAULIC OUTRIGGER

For hydraulic operation outriggers when no other hydraulic system is available. Most commonly used with a 12V DC powered crane. The pump kit includes: electric hydraulic pump with starter solenoid and control switch.

## PEDESTALS FOR FLAT BED MOUNTING

Designed to match the mounting requirements of crane.  
Heights up to 36 inches can be supplied at the below prices.  
For taller pedestals contact Liftmoore. Specify height when ordering.

### ITEM NO.

<b>18375</b>	PEDESTAL, 12K FT-LB 24"+ HEIGHT:____" FOR ABOVE 24"
<b>22796</b>	PEDESTAL, 12K FT-LB 24"- HEIGHT:____" FOR 24" & BELOW
<b>34076</b>	PEDESTAL, 16K FT-LB HEIGHT:____"
<b>32624</b>	PEDESTAL, 25K/36K FT-LB/24"+ HEIGHT:____" FOR ABOVE 24"
<b>23176</b>	PEDESTAL, 40K FT-LB / 24"+ HEIGHT:____" FOR ABOVE 24"
<b>29924</b>	PEDESTAL, 45K FT-LB / 18"+ HEIGHT:____" FOR ABOVE 18"
<b>33654</b>	PEDESTAL, 50K FT-LB / 24"+ HEIGHT:____" FOR ABOVE 24"
<b>22807</b>	PEDESTAL, 72K FT-LB VH HEIGHT:____" FOR ABOVE 24"

## MOUNTING PLATES

Mounting plates are for welding onto the truck body. They are fabricated to fit under the crane matching the bolt pattern and cutouts needed.

### ITEM NO.

<b>30684</b>	PLATE, MOUNTING L-21F/L-22/206 0.50" X 12" X 12" DRILLED FOR L-SERIES AND LA6K
<b>28694</b>	PLATE, MOUNTING 2010 & 3612 MACH 0.50" X 14" X 14" FOR 2010 & 3612
<b>30685</b>	PLATE, MOUNTING 2700/3200 MACH 0.50" X 15" X 15" FOR 208, 2000A, LA10K, 2700, 3200 & 1032
<b>16698</b>	PLATE, MOUNTING 4000 MACH 0.75" X 15" X 15" FOR 4000 & 1640
<b>31821</b>	PLATE, MOUNTING 25K/36K MACH 0.75" X 16.75" X 16.75" FOR 5000, 2550, 6036, & 3660
<b>22136</b>	PLATE, MOUNTING 4064 MACH 0.75" X 17.75" X 17.75" FOR 4064
<b>29925</b>	PLATE, MOUNTING 45K MACH 1.0 X 18.50 SQR. FOR MODEL 8045
<b>33905</b>	PLATE, MOUNTING 50K MACH 1.00" X 16.75" X 16.75" FOR 5080
<b>21954</b>	PLATE, MOUNTING 72K MACH 1.25" X 21" X 21" FOR 60100 & 72100

## RECOMMENDED ELECTRIC COMPONENTS

<b>29915</b>	KIT, CIRCUIT BREAKER (1) 150 A One additional circuit breaker for use with auxiliary battery
--------------	---

## RECOMMENDED HYDRAULIC COMPONENTS

### ITEM NO.

- 24211** KIT, RESERVOIR 10G. W/FILTER  
10 Gallon hydraulic reservoir with return line filter, no hoses or fittings. (40 Lbs.)  
Maximum 6 GPM system with only a crane
- 27369** VALVE, RELIEF ASSY W/FITTINGS  
Adjustable Pressure Relief Valve for all hydraulic cranes
- 24679** VALVE, VARIABLE FLOW CONTROL  
For all hydraulic cranes - no fittings

## LED BOOM TIP LIGHT KITS FOR EXISTING CRANES

All kits include 2 self-leveling lights. Each light contains 16 LEDs, and are rated for 2,100 lumens providing a total of 4,200 lumens. The lights provide a wide flood beam pattern and are constructed with a powder coated aluminum housing and shatter proof polycarbonate lens. Mounting Bracket, instructions, hardware, and required wiring are included with each kit.

- 29167** KIT, LIGHT LED BOOM TIP ELEC A  
For electric crane models: 206REL, 2700AR, 3200, 3612, 4000, 5000, and 6036X
- 29313** KIT, LIGHT LED BOOM TIP HYD A  
For hydraulic crane models: 1032, 1640, 2550, 3660, and 5080
- 29249** KIT, LIGHT LED BOOM TIP HYD Z  
For hydraulic crane models: 4064, 60100, and 72100 with existing 3-wire cord reel
- 29314** KIT, LIGHT LED BOOM TIP ELEC Z  
For electric crane model: 6036DX-22 with existing 3-wire cord reel
- 29602** KIT, LIGHT LED BOOM TIP HYD Z  
For hydraulic crane models: 4064, 8045, 60100, and 72100 with existing 4-wire cord reel

## SERVICE TOOLS

### ITEM NO.

<b>26304</b>	BOX, PENDANT TEST FOR DIAGNOSING WIRED PENDANT CONTROLS
<b>26386</b>	ADAPTER, WIRE 14-PIN TO 10-PIN WIRES HARNESS USE W/26304
<b>26391</b>	WRENCH, LOCKNUT WELDMENT AN-19 Fits 2700,3200 & 1032
<b>26503</b>	WRENCH, LOCKNUT WELDMENT AN-20 Fits 4000 & 1640
<b>26681</b>	TOOL, CRIMP DEUTSCH
<b>18759</b>	EXTRACTOR, DEUTSCH 16 GA PIN
<b>27348</b>	KIT, PALM PILOT DIAGNOSTICS FOR USE DIAGNOSING MULTIPLE BOARDS AND RECEIVERS
<b>26906</b>	PRESSURE GAUGE, 0-5000 PSI LIQUID FILLED, TO TEST HYDRAULIC SYSTEM, FITTINGS NOT INCLUDED
<b>27379</b>	VALVE, ASSY FLOW METER
<b>TTCT-1001</b>	EWB, REPROGRAMMING KTFM



## WP CONTROL SYSTEM

Available on select models of 12V DC electric powered cranes and hydraulic powered cranes

### SPECIFICATIONS FOR 12V D.C. POWERED CRANES

Proportional control of all hydraulic functions (rotation, boom elevation, boom extension). Winch remains on/off.

Proportional control achieved by controlling the speed of the pump motor via the trigger on the transmitter

Receiver: Sends output to all control circuitry including pump motor. Includes 2 LED lights for transmitter communication and error code flash patterns.

### SPECIFICATIONS FOR HYDRAULIC POWERED CRANES

Proportional control of all functions (winch, rotation, boom elevation, boom extension)

Proportional control achieved by controlling the proportional valve via the trigger on the transmitter

Receiver: Sends output to all control circuitry including proportional valve. Includes 1 LED light for transmitter communication and 1 display for error codes.

### GENERAL SPECIFICATIONS

Radio Transmitter: 900MHz frequency, up to 1,000 Ft. operating distance, rechargeable 3.7V Lithium-ion battery

Radio or CAN: The included 25' CAN cable can be used to hardwire the transmitter to the crane and eliminate radio signal. The CAN cable can also charge the batteries when plugged in to the crane and powered on.

Transmitter Display: Standard on all WP crane models. Includes visual for radio signal strength, transmitter battery life, system voltage from auxiliary or truck battery, percent load capacity, error codes, chassis X and Y axis measured in degrees (if equipped with chassis stability monitoring option)

Transmitter Switches: E-stop, horn, rotation, boom extension, boom elevation, hoist, trigger for speed control.

Transmitter also includes switches for engine start/stop, idle hi/low, and aux. on/off (optional engine control Receiver is required to enable these functions)

Charging indicator light: Located on bottom side of transmitter.

Charging terminal: Located on bottom of transmitter handle. Can accept a Liftmoore 12V DC charger, 110V AC charger, and CAN cable.

### WIFI DIAGNOSTICS

The built in WIFI connectivity enables diagnostic information and error code history which are viewable in a webpage using a static IP address which does not require cellular or data service. The WIFI can be used with any WIFI enabled device that has web browsing capabilities such as a smart phone, tablet, or laptop.

### INCLUDED

Paired transmitter and receiver, 25' CAN cable, 12V D.C. lighter port charger, WIFI connectivity

### AVAILABLE OPTIONS

Chassis stability monitoring system

Engine control receiver

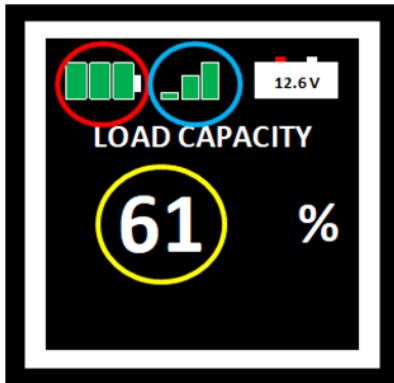
## WP CONTROL SYSTEM



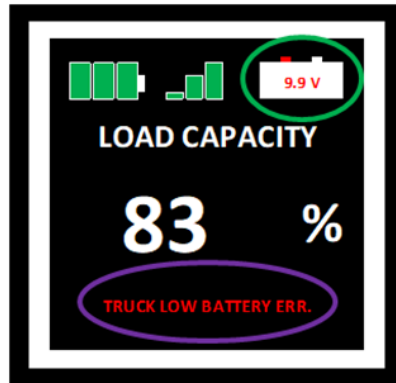
25' CAN cable



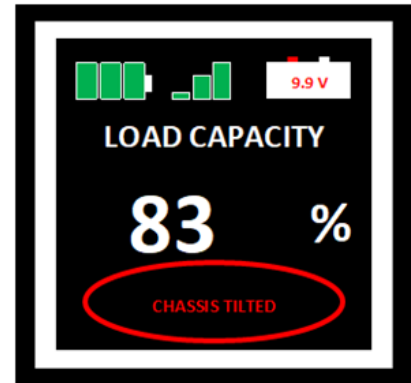
12V DC charger



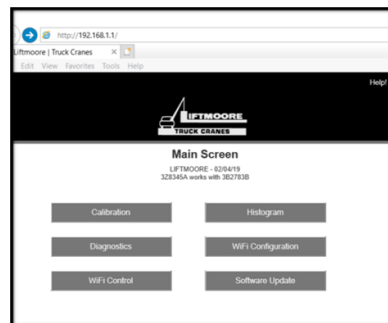
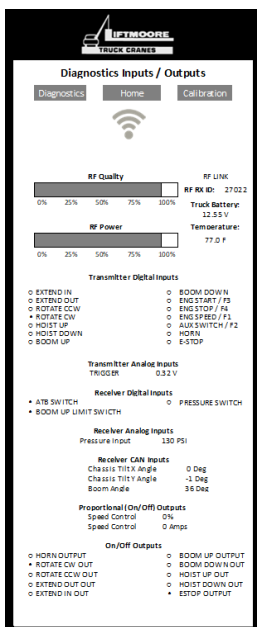
- Transmitter battery
- Signal Strength
- Percent Load Capacity



- System voltage
- Active errors



- Chassis tilted warning (if equipped with optional chassis stability monitor)



The menu options include a Diagnostics page which details the inputs from the transmitter and crane to the receiver, and the outputs of the receiver to the crane.

Also included in the menu options is a Histogram page, which indicates any active errors and the number of times an error or fault has been recorded for the life of the control system.

