

HOUSTON, TEXAS www.liftmoore.com
PHONE: (713) 688-5533 • FAX: (713) 688-6324
FAX: (800) 824-5559 (USA & CANADA)

Operating & Installation Instructions

Manual Out / Crank Down 45K Ft.-Lb. Outriggers

!ATTENTION!

KEEP THIS MANUAL WITH THE CRANE. OPERATION INSTRUCTIONS ARE CONTAINED IN A SEPARATE MANUAL. NEW OPERATORS SHOULD READ AND BE FAMILIAR WITH THE OPERATING INSTRUCTIONS BEFORE OPERATING THIS CRANE.

ORDER PARTS USING PART NUMBER, CRANE MODEL NUMBER AND CRANE SERIAL NUMBER TO ASSURE ACCURACY OF ORDERS.

**TABLE OF CONTENTS
P/N 34796**

**MANUAL OUT / CRANK DOWN
40K FT.-LB. OUTRIGGERS**

<u>DESCRIPTION</u>	<u>LOCATION</u>
TABLE OF CONTENTS.....	FORM 2780-0 / P.2
OPERATING INSTRUCTIONS.....	FORM 2780-0 / P.3
INSTALLATION INSTRUCTIONS.....	FORM 2780-0 / P.4
INSTALLATION DRAWING	DRAWING 50959-0
OUTRIGGER ASSEMBLY DRAWING.....	DRAWING 34684-0
DETENT PIN ASSEMBLY	DRAWING 22062-0



OPERATING INSTRUCTIONS

MANUAL OUT / CRANK DOWN 45K FT.-LB. OUTRIGGERS

Before using the crane, the outriggers must be set properly. It is advised that the front wheels of the truck are blocked, and the parking brake set to prevent the truck from rolling.

Always keep the truck as level as possible when operating the crane. Set the outriggers on firm ground that will not yield under load.

Check for overhead obstructions and especially for electrical wires. The crane must always be more than 10 Feet away from electrical wires.

Raise the outrigger detent pin and pull the outrigger out until the pin is engaged in the stop hole. Do not use the outrigger unless this pin is fully engaged. There are only two positions for the pull out section, either fully retracted or fully extended.

Manually lower the innermost telescoping portion of the jack by raising the "U" shaped handle. This handle releases the pins holding the manual outrigger section in place. After lowering, make sure the pins are set by pushing down on the handle until it contacts the jack's outer tube. Then crank the jack until there is lifting of the truck bed. The higher the truck, the less the truck must tilt to counterbalance the crane and its load. Leave the truck wheels in contact with the ground. Set the opposite side outrigger using the same method.

The outrigger is set and the crane is ready for use.

NOTE: At no time should the tire on the opposite side from the lifting side loose contact with the ground. If the tire rises above the ground, relocate the truck closer to the load to prevent this.

Do not operate the crane until you have read and understand the crane's operation as explained in the manual.

To put up the outrigger, crank the outrigger so that the cranked section is fully retracted, then raise the manual portion by lifting the "U" shaped handle and raising the manual section. **NOTE:** Some manual sections have a spring retraction mechanism. Make sure the pins engage the manual section and that the handle is again in its down position. Lift the detent pin and slide the outrigger in. Make sure the detent pin is engaged into the outrigger. The outrigger can slide out during a sharp turn if the detent pin is not engaged.



INSTALLATION INSTRUCTIONS

MANUAL OUT / CRANK DOWN 45K FT.-LB. OUTRIGGERS

Refer to Drawing No. 50959 for outrigger layout.

Read these instructions completely before starting installation.

This kit includes the outrigger center tube, with manual pull-out sections, crank down jack(s) and one crank handle.

Before mounting the outrigger center tube, orient the outrigger so that the longer manual pull out section is on the same side of the truck as the crane.

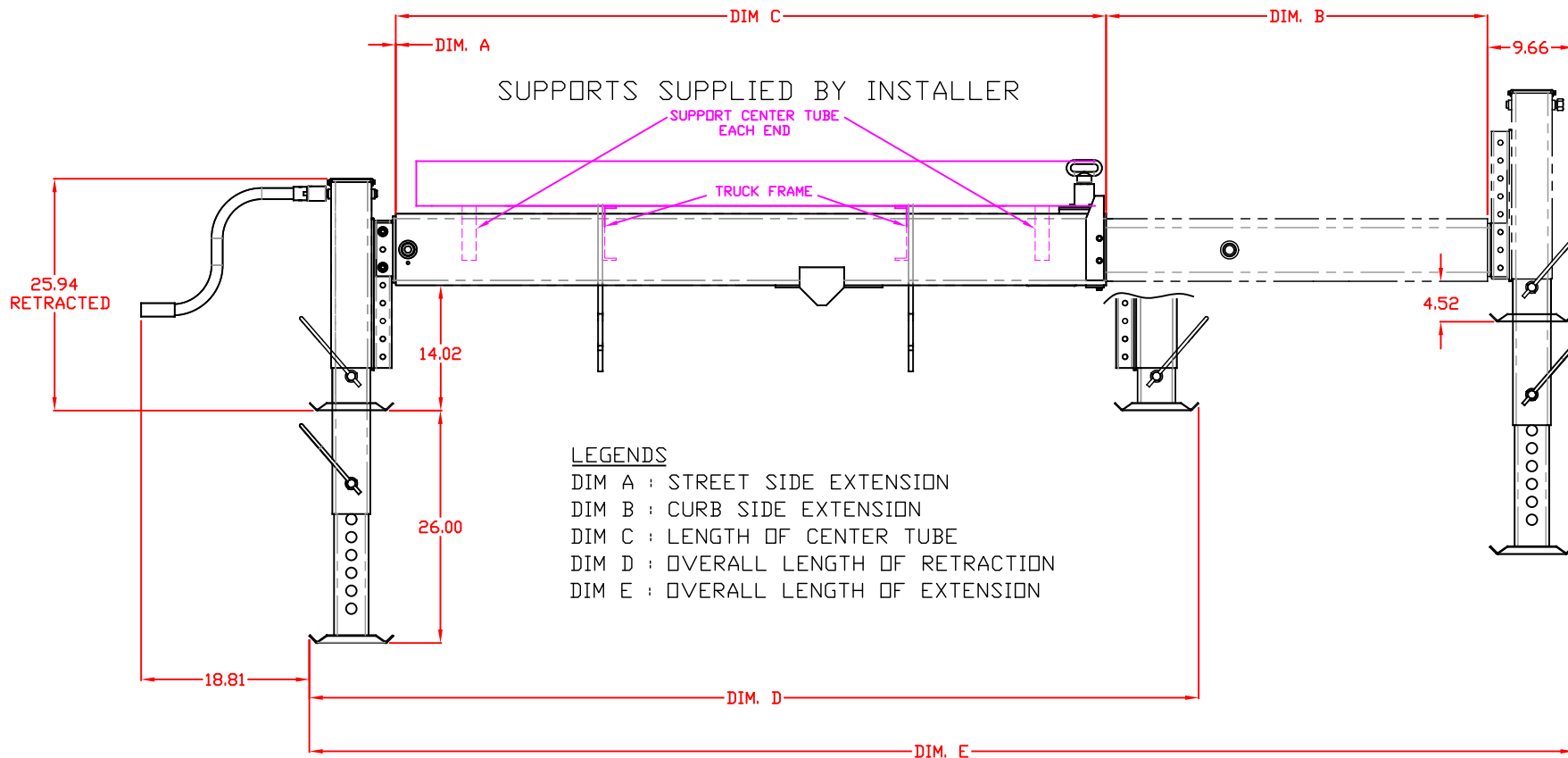
IMPORTANT: The outrigger center tube must be supported at the truck frame, at its outer end under the crane's structural support, and at the end opposite the crane. The center tube should not be supported by the body sheet metal.

Locate the outrigger as close to the crane as possible.

1. Set the outrigger with clearance from the truck body so that the pull out or extendable portion will clear the body when fully retracted. Set the vertical height so that the outrigger will be able to penetrate at least 6" below the ground. The outrigger jack is 25" long when retracted. It extends a maximum length of 51". The crank travel length is 13" and the total extension is 26".
2. Fabricate an "L" shaped mounting bracket for welding to the truck frame (also see drawing for center tube dimensions). The bracket is not furnished. Weld the cross tube securely to the bracket. This will provide support for the outrigger at the truck frames.
3. Weld the outer end of the cross tube securely to the crane support structure using 4" channel or stronger steel bars. This outer end of the cross tube must be supported to carry the crane load and prevent bending of the center tube, and/or truck body. This should be done below the crane and on the side opposite the crane.
4. Also check the outrigger for operation. Especially note that the detent pins on the pull out and drop down sections fully engage in all operating positions.

Place labels on the crank down jacks warning of crushing injury. The outrigger is ready for use!





#	DESCRIPTION	DIM. A	DIM. B	DIM. C	DIM. D	DIM. E
39494	OUTRIGGER, 45K 42CMQCD-SFXCD	0"	42.00"	79.50"	99.5"	141.5"



Houston TX
 (713)-688-5533
 www.liftmoore.com

DRWN AT 1/24/2022 SHEET: 1-1
 REV.
 DESC:

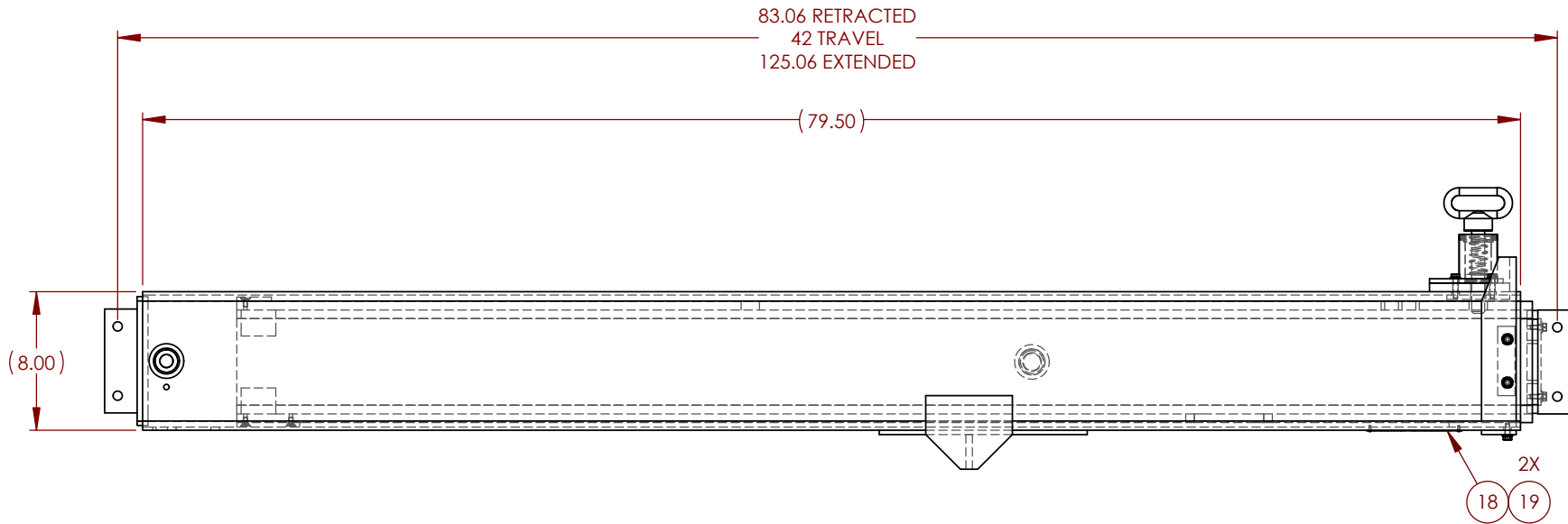
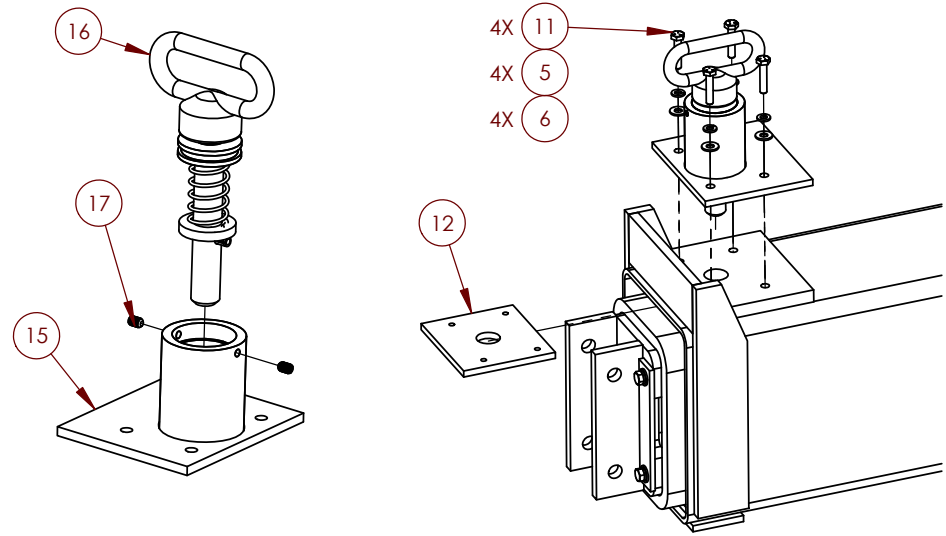
DWG, OUTRIGGER 45K HOCD INST

DRAWING NO.

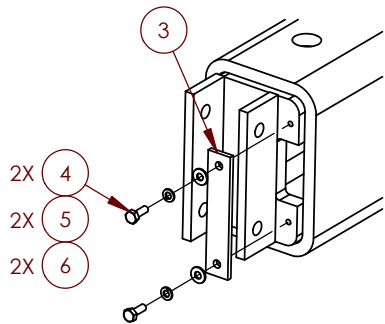
50959

REV.

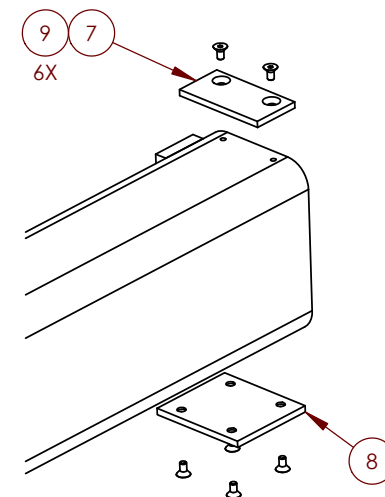
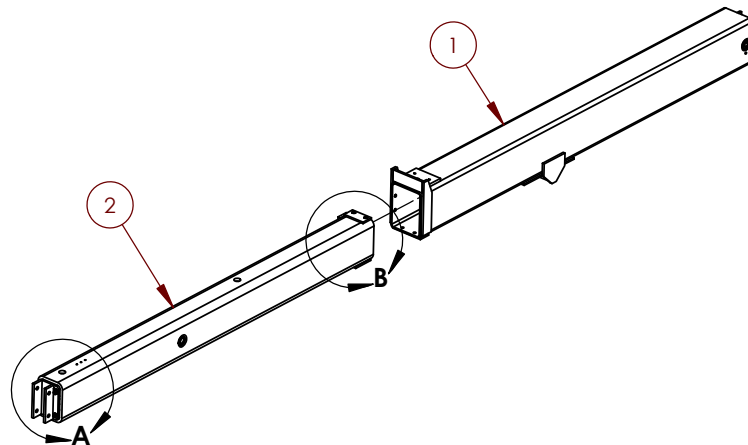
ITEM NO.	PART NUMBER	PART DESC	QTY
1	29795	OUTRIG, CEN 45K 42CMOHO-SFX WD	1
2	29804	OUTRIG, CURB 45K 42CHOHD WELD	1
3	28931	PLATE, COVER BULKHEAD 40K	1
4	28699	SCREW, HHC 0.25-20 X 0.75 SS	4
5	28690	WASHER, LOCK 0.25 316 SS	10
6	33352	WASHER, FLAT 0.25 SAE SS GR304	10
7	33952	PAD, NYLON 0.25 X 3.87 X 2 CSK	1
8	33950	PAD, NYLON 0.26 X 4 X 3.62 CSK	1
9	28698	SCREW, SOC FH 0.25-20 X 0.50 SS	6
10	28705	SCREW, HHC 0.25-20 X 1.00 SS	2
11	28833	SCREW, HHC 0.25-20 X 1.25 SS	4
12	29950	PLATE, SPACER BOOM END .25-4HO	1
13	16820	PLATE, SPACER BOOM END .50-2HO	1
14	25621	PAD, NYLON 0.26 X 3.87 X 2 TAP	1
15	29797	TUBE DETENT W/PLATE WELD	1
16	22062	DETENT, INNER ASSY H.D. 4.75"	1
17	32587	SCREW, SET 0.25-20 X 0.37 PL.	2
18	23389	PLATE, SERIAL NO. MACHINING	1
19	22406	SCREW, DRIVE	2



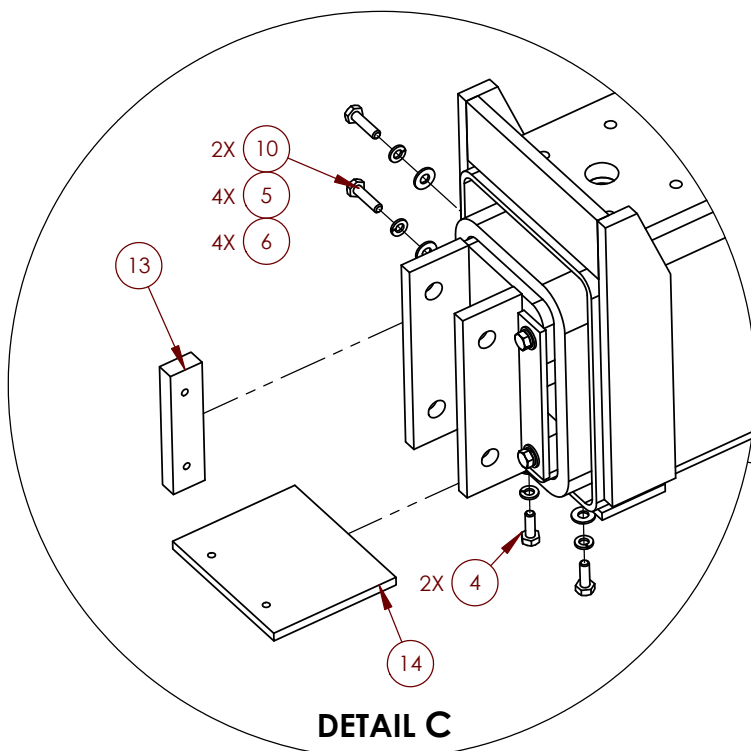
UNLESS SPECIFIED MACHINED PART MINIMUM 250 RMS 1/4" MIN. WELDS USE E70 ROD DIM. TOLERANCES .XXX ± .005 .XX ± .030 .X ± .100 FRAC. ± 1/16 XX° ± .5°	PROPRIETARY & CONFIDENTIAL THE INFORMATION CONTAINED IN THIS DRAWING IS THE SOLE PROPERTY OF LIFTMOORE INC. ANY REPRODUCTION IN PART OR AS A WHOLE WITHOUT THE WRITTEN PERMISSION OF LIFTMOORE INC. IS PROHIBITED.		<h1>LIFTMOORE INC.</h1>	
	THIRD ANGLE PROJECTION		OUTRIG ASSY 45K 42MOCD-SFXCD	
CHECKED	JE	11/11/2019	MTRL:	SHEET 1 - 2
ENG APPR.	DP	DP	WEIGHT: 373.35 Lbs	DWG. NO. 34684
DESC:				REV A



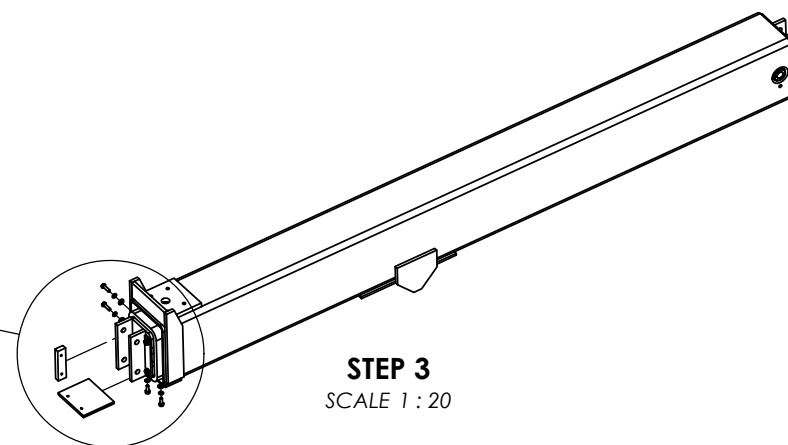
DETAIL A/STEP 1
SCALE 1:7



DETAIL B/STEP 2
SCALE 1:7

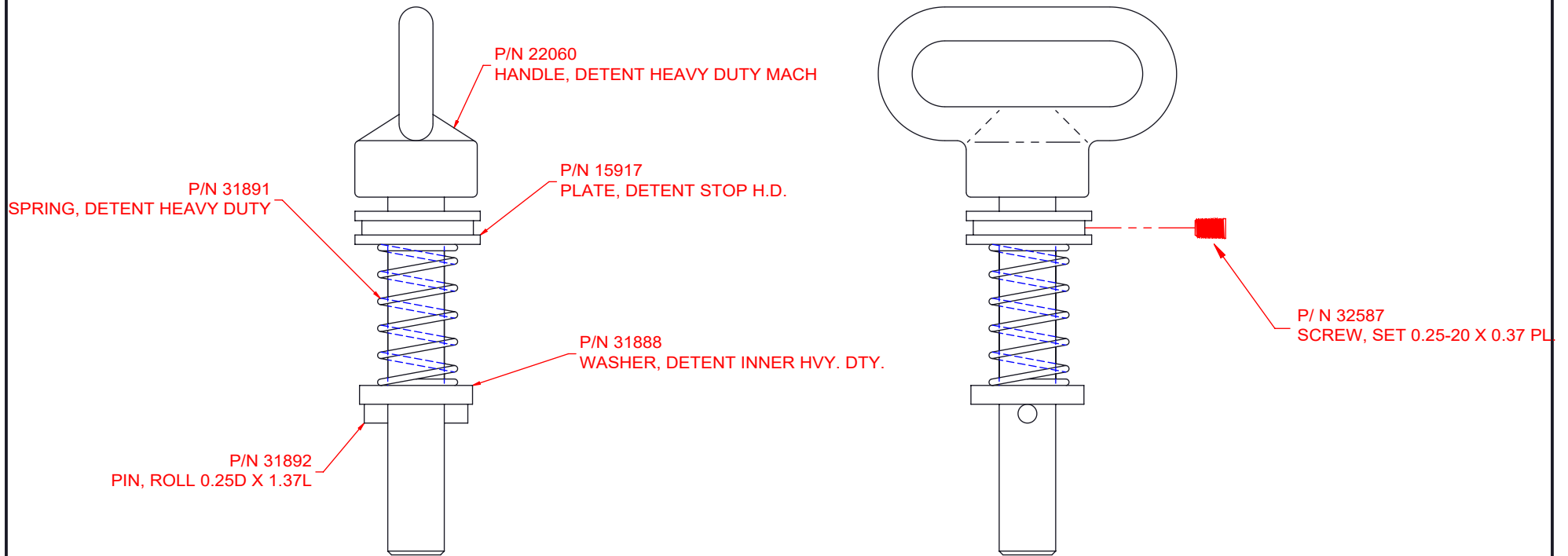


DETAIL C



STEP 3
SCALE 1:20

UNLESS SPECIFIED MACHINED PART MINIMUM 250 RMS 1/4" MIN. WELDS USE E70 ROD DIM. TOLERANCES .XXX ± .005 .XX ± .030 .X ± .100 FRAC. ± 1/16 XX° ± .5°	PROPRIETARY & CONFIDENTIAL THE INFORMATION CONTAINED IN THIS DRAWING IS THE SOLE PROPERTY OF LIFTMOORE INC. ANY REPRODUCTION IN PART OR AS A WHOLE WITHOUT THE WRITTEN PERMISSION OF LIFTMOORE INC. IS PROHIBITED.		<h1>LIFTMOORE INC.</h1>		REV A
	THIRD ANGLE PROJECTION		OUTRIG ASSY 45K 42MOCD-SFXCD		
CHECKED JE ENG APPR. DP	JE DP	11/11/2019 DP	DRAWN AT MTRL: SHEET 2 - 2 WEIGHT: 373.35 Lbs	DWG. NO. 34684	REV A



PRE-BUILD

REPORT ERRORS OR CHANGES TO
ENGINEERING IMMEDIATELY

TYPICAL TOLERANCES		LIFTMOORE, INC Houston TX (713)-688-5533					
MACHINE	± .005						
PLASMA	± 1/32	DETENT, INNER ASSY H.D. 4.75" OUTRIGGERS					
WELD	± 1/16						
ADDED SET SCREW	JC	9/05/08	A	CAD DRAWING	DRWN BY: TV	DATE: 4/18/06	DRAWING NO. 22062
DESCRIPTION	BY	DATE	REV.	DO NOT SCALE	CHK'D BY:	MATRL:	