

TABLE OF CONTENTS
USERS MANUAL P/N 29601
L-21W-7 VH ATB
7 FT. BOOM, W/WINCH 23872 & SS ROPE

SECTION I

CRANE INSTALLATION INSTRUCTIONS

CRANE INSTALLATION INSTRUCTIONS	F1487-E.....	1-1
MOUNTING PATTERN.....	DWG.50389-C	1-3
ELECTRICAL INSTALLATION	DWG.50377-G	1-4

SECTION II

GENERAL OPERATION, INSPECTION, AND MAINTENANCE

CRANE SAFETY RULES.....	F1122-C.....	2-1
INTRODUCTION	F1111-D.....	2-3
OPERATING RESTRICTIONS	F1482-A	2-4
OPERATING PRACTICES.....	F1482-A	2-4
INSPECTION AND MAINTENANCE.....	F1483-0	2-7
MONTHLY INSPECTION REPORT	F1484-0	2-8

SECTION III

CRANE SYSTEMS AND TROUBLESHOOTING

CRANE OPERATION	F1485-A	3-1
MANUAL FUNCTIONS.....	F1401-A	3-2

SECTION IV

CRANE SPECIFICATIONS

LIFTING CAPACITIES	F1629-A	4-1
BOLT SPECIFICATIONS	F1629-A	4-1

SECTION V

PARTS

BOX PARTS LIST.....	F2712-A	5-1
CRANE ASSEMBLY	DWG.29597-B	5-2
PENDANT CONTROL	DWG.30448-A.....	5-4
BASE-HOUSING ASSEMBLY.....	DWG.25374-B	5-5
FLANGE FRAME ASSEMBLY.....	DWG.25373-B	5-6
BOOM ASSEMBLY – 7 FT	DWG.29568-B	5-7
BOOM PRE-ASSEMBLY – 7 FT.....	DWG.26982-C	5-9
WINCH BREAKDOWN	DWG.23872-C	5-10
WINCH PARTS LIST.....	DWG.23872-C	5-11
CONTACTOR BOX ASSEMBLY.....	DWG.26130-A.....	5-12
ELECTRICAL SCHEMATIC.....	DWG.50388-A.....	5-14

WARRANTY	F1442-A	
----------------	---------------	--



THIS PAGE INTENTIONALLY LEFT BLANK



HOUSTON, TEXAS
FAX: (800) 824-5559 (USA & Canada)
FAX: (713) 688-6324
PHONE: (713) 688-5533
www.liftmoore.com

MODEL L-15 & L-21W INSTALLATION INSTRUCTIONS

Read these Instructions completely before starting the Installation.

Before installing make sure you have all necessary parts. Please refer to the Owner's manual Parts Section box parts list for the list of parts required for installation. Report any shortages to Liftmoore, Inc. immediately.

The mounting for this crane must be adequate for the moment rating (6,000 Ft.-Lbs.) and for the maximum load (2,000 Lbs.). Liftmoore can supply recommended installation drawings for your application if requested.

Drill four 9/16" holes in the mounting plate on a 9.5" square pattern to match the crane's base plate. Bolt the crane to the mounting structure using the 1/2" x 2-1/2" Grade 8 bolts and hex nuts supplied torque to (106 FT-LBS DRY), (80 FT-LBS LUBRICATED).

If the crane cannot be folded vertically for travel, an eyebolt or other device must be mounted on the body near the boom tip. The hook must engage the eyebolt and the wire line be secure whenever the truck is in motion.

A manual disconnect switch with mounting bracket and terminals is provided with the crane. This switch will act as the main power disconnect for the crane. Removing power from the crane during periods of non-use will help to increase the life of the crane's electrical components. The switch should be mounted as near as possible to the crane and in a position which will facilitate its use. Determine the appropriate mounting position for the switch and use the supplied terminals to splice into the crane's main power cable. We recommend that this be below the welding connector supplied with the crane. Drawing No. 50932 illustrates where we recommend installing the disconnect switch, welding connector and circuit breaker (Install the circuit breaker near the battery). Always leave this switch turned to the off position to take the crane out of the electrical circuit when it is not in use.

Run the No. 4 battery cable along the inside of the chassis frame to the battery's positive terminal. Leave enough cable extending outside the body to connect to the crane and allow 360-degree rotation of the crane. Use universal type or marine type terminals to secure all wiring to the battery post. Protect the cable from heat sources such as the catalytic converter exhaust manifold and muffler. Wrap electrical tape around the cable or enclose it in loom whenever it passes through the body or frame.

Use the extra ground wire supplied to connect the battery's negative post to the truck frame. Leave all original wiring as it was. This heavy ground wire is necessary to keep the crane running as efficiently as possible and so that the crane will not be grounded through the truck's wiring harness.

Insert the brake handle in the brake band and tighten securely. Do not over tighten.

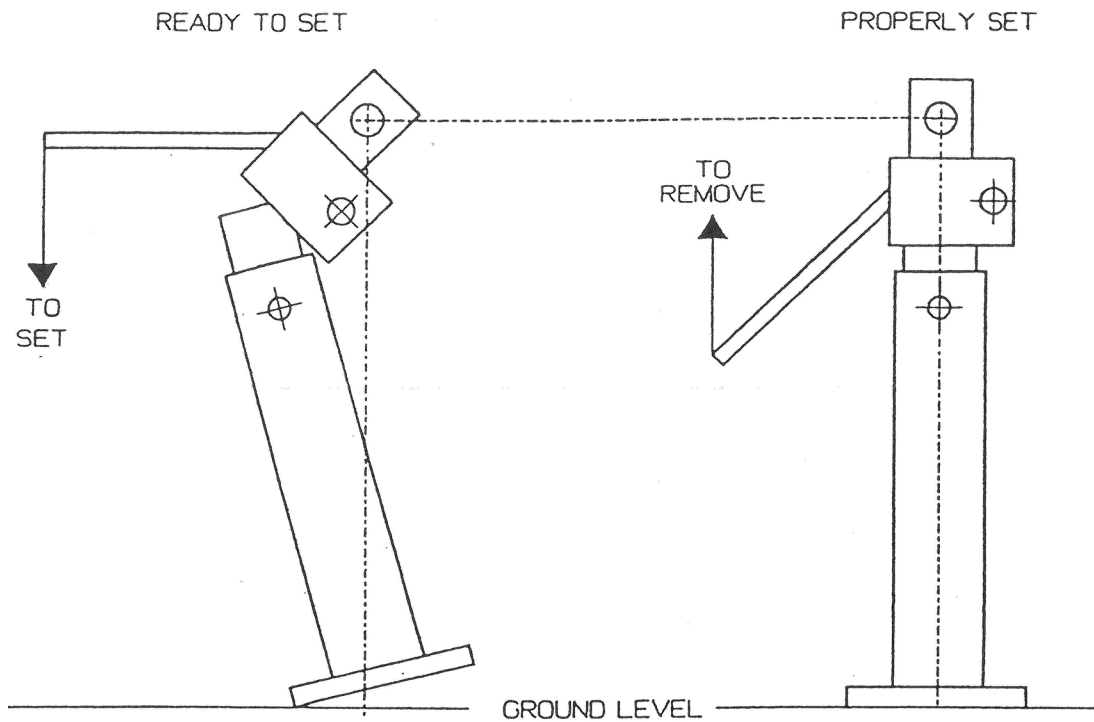
Check that boom and housing pins are in place and have hairpin keepers included.

Install a jackstand or outrigger to stabilize the truck when lifting with the crane.

The crane is now ready to use. Do not operate the crane until you have read and understand the Operating Instructions section of this manual.



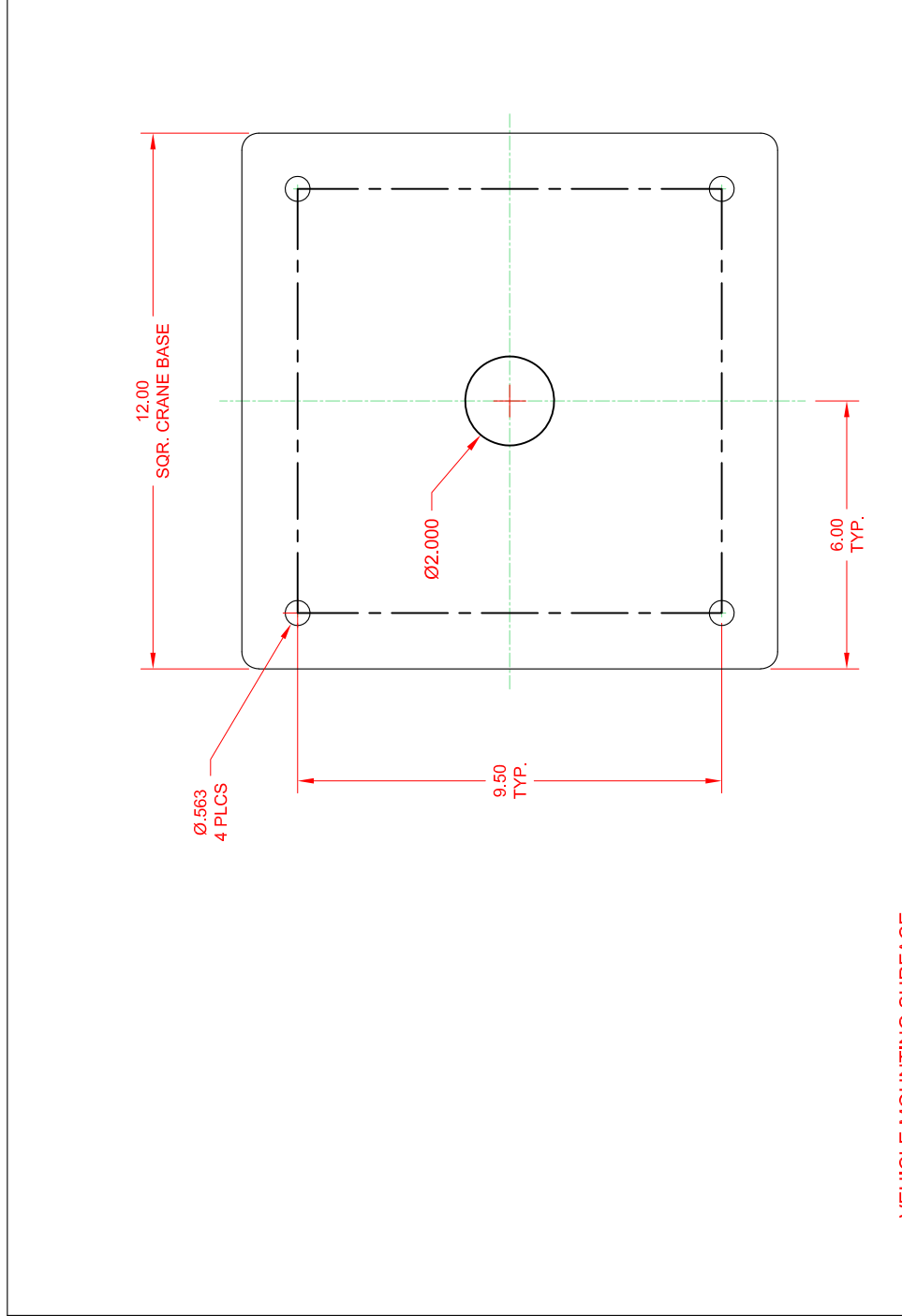
INSTALLATION INSTRUCTIONS



The above sketches show the overcenter jackstand when it is ready to set and when properly set. When it is set the jackstand is straight and tight against the truck suspension. Raising the truck slightly with the jackstand will hold the jackstand in a vertical position.

INSTALLATION

Mount the 1" x 4.5" long pipe supplied under the crane support with a structural tie-in to the crane mounting. This support must be able to hold the crane load plus the counterbalancing load. Use at least 4" x 5.4# structural channel for this support. The 1" pipe should project outside the body between $\frac{1}{4}$ " and $\frac{1}{2}$ " so that the jackstand will not rub against the body.



VEHICLE MOUNTING SURFACE

NOTE: ALL HOLES DRILLED THRU



Houston TX
(713)-688-5533
www.liftmoore.com

DRWN BY: JC

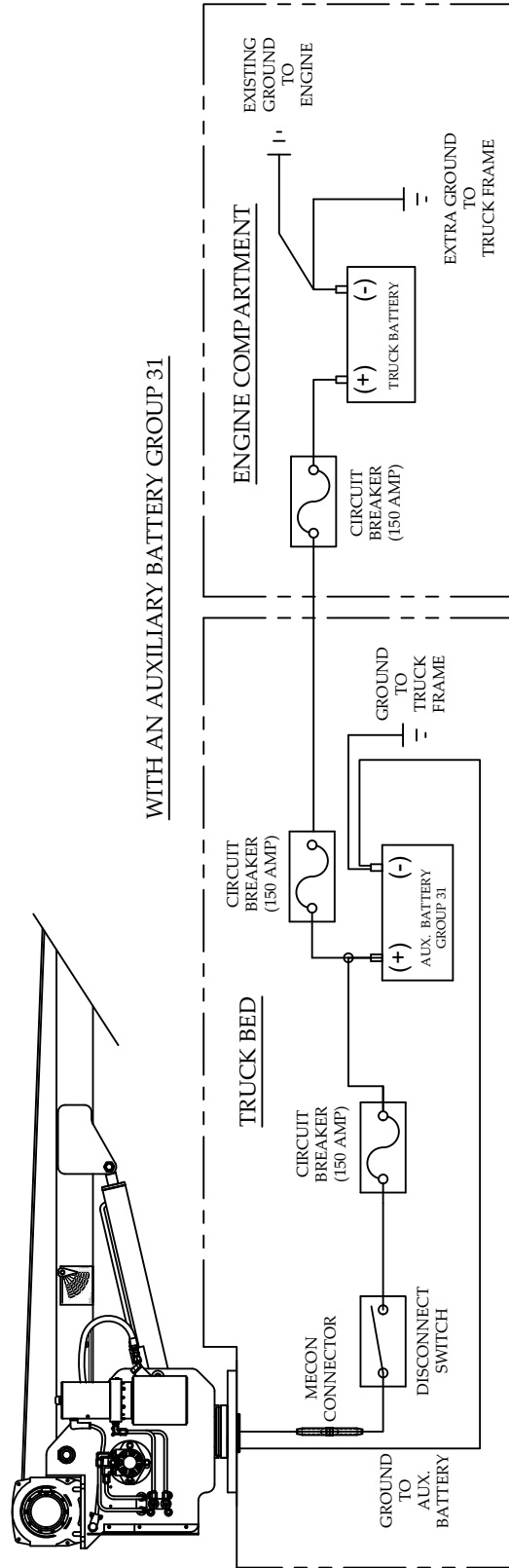
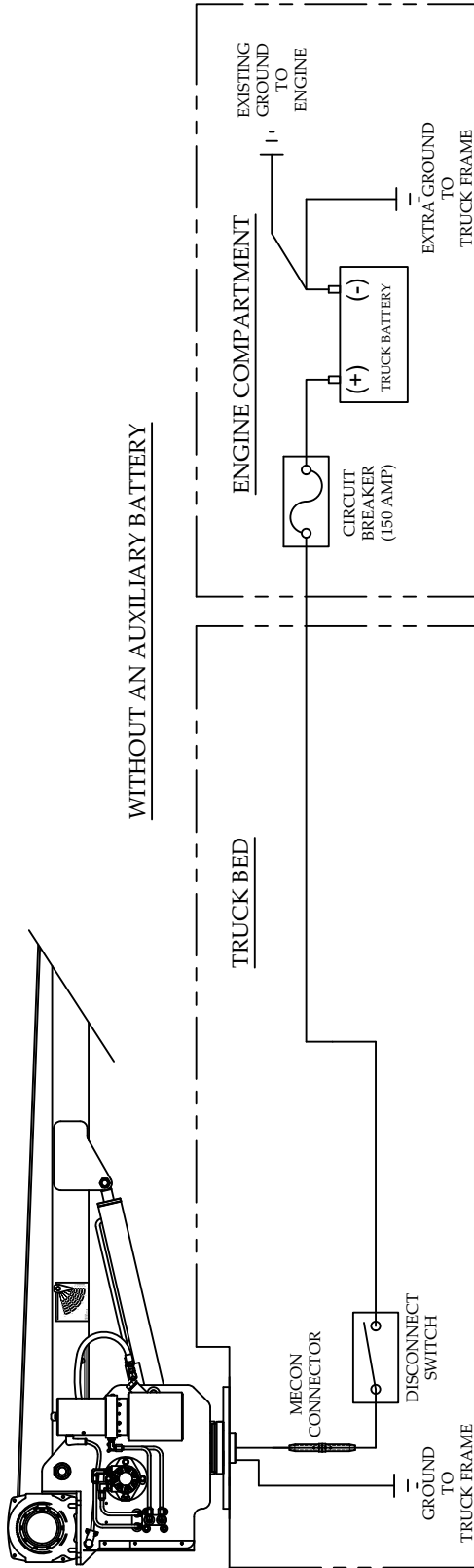
DATE: 4/23/08

PATTERN, CRANE MOUNT L-15/L-21

DRAWING NO.

50389-C

RECOMMENDED WIRING SCHEMATIC FOR 4000 MODEL AND SMALLER CRANES:



DRAWING NO. **50377-G**

SCHEM, CRANE ELEC. INSTAL-ELEC
FOR 4000 & SMALLER ELECTRIC CRANES

DRWN BY: NA
DATE: 08/26/21

Houston TX
(713)-688-5533
www.liftmoore.com



CRANE SAFETY RULES

CAUTION!

1. READ AND UNDERSTAND OPERATOR'S MANUAL.
2. INSPECT VEHICLE AND CRANE INCLUDING ITS OPERATION BEFORE DAILY USE.
3. USE THIS EQUIPMENT ONLY ON SOLID LEVEL GROUND WITH OUTRIGGERS OR JACKSTANDS PROPERLY SET.
4. BEFORE OPERATING THE CRANE REFER TO MAXIMUM LOAD CHART ON CRANE FOR OPERATING LOAD LIMITS.
5. BE SURE LOAD BEING LIFTED IS WITHIN SAFE WINCH CAPACITY AS WELL AS SAFE CRANE CAPACITY. MULTI-PART LINE OPERATION IS REQUIRED WHEN SINGLE LINE LOAD CAPACITY OF WINCH IS EXCEEDED.
6. DO NOT OPERATE, WALK, OR STAND UNDER THE BOOM OR ANY SUSPENDED LOAD.
7. ALWAYS PAY OUT LOAD LINE BEFORE EXTENDING BOOM. WIRE ROPE DAMAGE AND / OR BREAKAGE MAY OCCUR.
8. BOOM TIP MUST BE DIRECTLY OVER THE LOAD BEFORE ANY LIFTING IS STARTED. DO NOT DRAG LOADS WITH THIS CRANE.
9. BOOM MUST BE IN ITS BOOM REST BEFORE MOVING THE VEHICLE.
10. MAINTAIN THIS CRANE AS REQUIRED IN THE OWNER'S MANUAL.
11. DO NOT ALLOW PERSONNEL TO RIDE ON THE LOAD LINE, LOAD, OR BOOM OF THIS CRANE.
12. IT IS UNLAWFUL TO OPERATE THIS EQUIPMENT WITHIN TEN FEET OF HIGH VOLTAGE LINES.



THIS PAGE INTENTIONALLY LEFT BLANK



F1122-C
02/01/22

HOUSTON, TEXAS
FAX: (800) 824-5559 (USA & Canada)
FAX: (713) 688-6324
PHONE: (713) 688-5533
www.liftmoore.com

INTRODUCTION

This crane is a powerful machine designed to lift and move heavy loads. There are many hazards associated with these operations. Liftmoore has designed this crane to be as safe as possible but -

IT IS THE OPERATOR'S RESPONSIBILITY TO PREVENT ACCIDENTS!

This takes pre-planning, attention, and knowledge of basic principles and rules. Even if you have used similar cranes, reading this manual in its entirety will help prevent damage, injury, or even loss of life; benefits well worth the short amount of time it takes to read these pages.

REGULATORY AUTHORITY

Use of this crane is governed by OSHA 29 CFR 1910.180 and may be governed by other federal, state, or local regulations.

IT IS THE OPERATOR'S RESPONSIBILITY TO UNDERSTAND AND COMPLY WITH ALL APPLICABLE REGULATIONS GOVERNING THE OPERATION, INSPECTION, AND MAINTENANCE OF THIS CRANE.

Personnel should be trained, tested, and certified, as recommended by OSHA and ANSI standards, before operating this crane.

USING THIS MANUAL

This manual assumes that the crane is mounted on a typical service body type or similar truck, which is powered by the vehicle electrical or hydraulic system, and is controlled by either the standard pendant control or FM radio control sold by Liftmoore, Inc.

This manual is supplied to provide basic guidelines for the safe use, routine maintenance, and general inspections of this crane.

This manual is supplied to provide basic guidelines for the safe use, routine maintenance, and general inspections of this crane.

Laws, regulations, standards, or policies may be more restrictive than this manual. If a conflict exists for any limit or condition, the safest or most prohibitive shall be used. Under no circumstances shall the load, moment, or stability ratings be exceeded.

Pay particular attention to the following:

WARNING! – Draws attention to hazards, conditions, or procedures that if not observed could result in injury or death.

CAUTION! – Draws attention to hazards, conditions, or procedures that if not observed could result in damage to the crane, load, or other equipment. Equipment failure could in turn lead to injury or death.

NOTE! – Draws attention to conditions or procedures that are essential to emphasize.

For questions, interpretations, or to report errors, please contact Liftmoore, Inc, Engineering Dept.



OPERATING RESTRICTIONS

DUTY CYCLE

For Electric Cranes the duty cycle time should be limited to 10%. This is limited by heat buildup in the motors and declining charge in the batteries. (Installing extra batteries near the crane helps keep the voltage at maximum.)

PERSONNEL

LIFTING OR MOVING OF PERSONNEL IS STRICTLY PROHIBITED! This crane was neither designed nor intended to lift personnel. Under no circumstances should anyone be allowed to ride on the crane, line, or load. All non-essential personnel must be kept away when using the crane. The load must never be moved over people, nor must anyone be allowed to pass or stand under a suspended load.

ELECTRICAL LINES

Consult ASME B30.5 for operating procedures, minimum safe distances, and prohibited zones when working around electrical lines or poles.

When operating near electrical power lines, the crane must be positioned so that the distance from the crane to the lines or poles is equal to or greater than the length of the fully extended boom plus the minimum safe distance required.

All parts of the crane, line, and load must be kept a minimum safe distance from electrical power lines and poles. This distance is 10 feet for electrical lines carrying 50kV or less.

UNDER NO CIRCUMSTANCES SHOULD A CRANE BE OPERATED UNDER ELECTRICAL POWER LINES.

OPERATING PRACTICES

SETUP

POSITION The vehicle must be positioned so that the load is kept as close to the crane base as possible to reduce the moment on the crane. Consideration must be given to starting and ending position as well as firmness and slope of the ground and any obstructions.

OUTRIGGERS/JACKSTANDS The outriggers or jackstands must be firmly set and the vehicle as level as possible. This will reduce the stresses on the rotation drive and keep the load off the vehicle's suspension. Keep in mind that the weight on the vehicle will shift as the crane and load are rotated.

Set the vehicle's parking brake. The jackstand is inserted into the tube in the released position. Set the hitch pin so that the jackstand will lift the truck slightly when put into the locked position. When setting up the jackstand, it must be straight up and down. It must be in contact with a hard, unyielding surface. If necessary use a heavy timber to support the load on soft surfaces. When set, the vehicle should be as level as possible. It is advisable to set wheel chocks to hold the vehicle in position.

After loading the vehicle it may not be possible to remove the jackstand by releasing the handle. When this occurs the vehicle may be driven off the stand.

Use the jackstand on every load. Even a light load can cause considerable tilt when picked up at a large radius. Use the jackstand to keep the truck level.



LOAD LIMIT The operator must understand the crane load chart. The operator must ensure that the load is within the load limits over the entire range which it will be moved. Be sure to include the weight of any lifting devices including the travel block.

The load limit chart is attached to the side of the crane to aid the operator.

STABILITY The operator is responsible to verify that the truck is stable at any area where the Crane is rotated.

TRAVEL BLOCK The operator must determine if the load is within the single line compatibility of the winch or if a multi-part line configuration is needed.

REEVING Ensure the proper routing of the rope through the sheaves and travel block. The rope must lie in the sheave groove and must not rub against any metal objects.

Ensure the rope is correctly wound on the winch drum. The crane assembly drawing will indicate if the rope must be wound over the top or bottom of the drum. The rope must never contact any part of the winch mounting.

WARNING!

If the winch winding direction is reversed the brake will not work and the load will fall.

ATTACHING THE LOAD

POSITION The boom tip must be moved over the load before lifting so that the load will be lifted straight up.

CAUTION!

Never drag a load with the crane. Dragging a load puts very high stresses on the crane for which it was not designed.

ROPE Check the rope condition to ensure it is not frayed or damaged. Ensure that the rope is not kinked and that it does not contact any sharp edges or make any sharp bends.

If using double line configuration, ensure that the lines are not twisted.

CAUTION!

Never wrap the hoist rope around the load! Serious damage to the rope WILL occur.

HOOK Always make sure the load is applied to the throat of the hook. Never use a bent hook.

CAUTION!

Always lift with the throat of the hook. Never lift with the load applied to the tip of the hook. Doing so will bend the hook.

SLINGS If the load does not have a lifting eye, use a nylon, chain, or other type of sling designed for lifting and rated for loads greater than that being lifted.



BALANCE Ensure the load will be secure and balanced when lifted. Ensure that the load cannot shift in the sling and that the sling cannot slide across the hook should the load become unbalanced.

LIFTING THE LOAD

Before lifting, ensure that the load is free from all mountings and is no way attached or stuck to anything.

Ensure that at least five full wraps remain on the winch drum at all times.

Test the winch brake by lifting the load a few inches and ensuring that it does not slip.

HOLDING THE LOAD

The operator must keep the load in sight at all times once it is lifted.

The operator must never leave the controls once the load is lifted.

The operator must ensure that no one is allowed to pass or stand under a suspended load.

CAUTION!

Never move the vehicle with a suspended load. Doing so will put dynamic loads on the crane for which it was not designed.

MOVING THE LOAD

If the truck is not level when a load is lifted on a Manual Rotation Crane, the load will gravitate to the lowest point. Caution must be taken to ensure the operator is not in a Pinch Position (on a downhill side of the lift point). The Manual Brake Band should be snug to help control the swing but still allow the load to be pushed around to the area where it is to be set down.

TRANSIT

While in transit, the crane must be stowed, preferably in a boom rest. The crane must be prevented from rotating and the hook prevented from swinging.



INSPECTION AND MAINTENANCE

OSHA and ANSI require frequent and periodic inspections. Records of these inspections must be kept readily available. Liftmoore requires periodic maintenance to ensure proper operation and prolonged life of the crane

INSPECTION

DAILY INSPECTION

The following items must be checked daily before the crane is put into use.

- All safety devices
- Rope for kinks or frayed wires
- Rope reeving
- Hooks for 15% increase in throat opening or bent (twisted) more than 10° out of plane
- All bolts are in place and tight
- All hitch pins are in place

PERIODIC INSPECTION

A Monthly Inspection Report form is included in this manual. It is provided to assist in compliance with OSHA and ANSI inspection standards. These publications should be checked periodically for updates.

MAINTENANCE PRECAUTIONS

Before any maintenance is performed, the vehicle should be out of the way and the crane secured.

WARNING!

Never perform any maintenance while the crane has any type of load on it.

BOLTS Bolts may loosen over time due to vibration, therefore they should be checked periodically. If bolts need to be replaced, make sure they are replaced with bolts of equal or greater strength. Check the periodic maintenance schedule (Crane Specification Section) for bolt specification and torque.

NOTE!

Sheave bolts are not standard bolts. The shank and thread lengths of these bolts have been modified so that they do not pivot on the threads. Consult the parts section of this manual for part numbers of these bolts.



MONTHLY INSPECTION REPORT
Manual Boom Extension L-21

Crane Model No. _____ **Serial Number** _____

- Are Boom Hitch Pins and Keepers in place? Yes _____ No _____
- Wire Line Hook with Safety Latch Working? Yes _____ No _____
- Is Hook OK, (Not bent)? Yes _____ No _____
- Is Thimble on Wire Rope OK? Yes _____ No _____
- Does Traveling Block function correctly? Yes _____ No _____
- Is Wire Rope OK, not kinked or frayed? Yes _____ No _____
- Are all Boom Sections straight? Yes _____ No _____
- Are Sheave Bolts in place and tight? Yes _____ No _____
- Do all Sheaves rotate easily? Yes _____ No _____
- Are Mounting Bolts torqued correctly? Yes _____ No _____
- Are Boom Support Mounting Bolts secure? Yes _____ No _____
- Are Winch Mounting Bolts tight? Yes _____ No _____
- When stopped, does winch down drift less than 1.0 Inches? Yes _____ No _____
- Is Load Chart / Serial Plate in place and easily read? Yes _____ No _____
- Are functions on Pendant operating correctly? Yes _____ No _____
- Is Outrigger or jackstand straight and functioning? Yes _____ No _____

Any items checked 'No' must be repaired before using this crane.



CRANE OPERATION

Hoist Winch Only

PENDANT CONTROL

All user inputs are facilitated by the remote pendant control. The pendant control plug mates with the crane control socket and controls the hoist and other functions.

OPERATION

Raise the cover on the crane control socket and plug in the pendant. Ensure all pins are straight and free of dirt, moisture, and corrosion.

NOTE!

The control socket cover locks the plug in the socket and must be lifted to unplug the pendant.

CARE AND MAINTENANCE

The pendant control is designed to be as rugged and maintenance free as possible; however, care should be used in handling and storage as it is expensive to replace.

Follow these simple practices:

- Keep the pendant out of the weather
- When not in use, store the pendant inside the vehicle
- Do not wrap the wire too tightly as internal damage to the wires may result
- Do not place sharp or heavy objects on the cord

NOTE!

The pendant is designed to be weatherproof not waterproof. It may be used in inclement weather, but if left outside or where water can puddle, water can seep inside.

Maintenance should be limited to routine inspection of the plug, wire, and fasteners.

SAFETY SYSTEM

This crane does not have a load limiting or ATB safety system.

It is the operator's responsibility to understand and strictly adhere to the load limits of the crane. The operator must also know the weight of any objects to be lifted.

The operator must always be aware of the hook and travel block position and ensure that the crane is never two-blocked (allowing the travel block or hook to contact the crown plate.)

ELECTRICAL SYSTEM

This crane is powered by the vehicle electric system.

CIRCUIT BREAKER

A circuit breaker is supplied with the crane and should be installed as close to the battery as possible.

QUICK DISCONNECT

A quick disconnect is provided. This plug will disconnect the crane from the vehicle's batteries. It should be separated whenever the crane is not in use. Disconnecting this plug will prevent unauthorized use or inadvertent operation of the crane. To disconnect the plug, line up the arrows on the plug and pull it apart. Power should be disconnected whenever the crane is not in use to prevent unauthorized use or inadvertent operation of the crane. When the power cord is connected, the solenoids are connected directly to the battery and the crane can run if objects come in contact with the solenoid post and the power is not off.



MANUAL FUNCTIONS

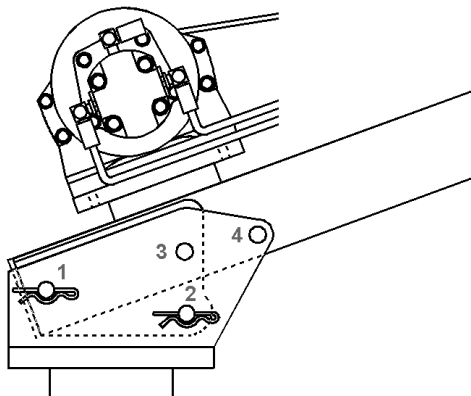
ELEVATION

The L-21 crane has three positions for the boom (Refer to Figure 1). With pins in holes 2 & 4 the boom is folded for travel only. Do not use the winch with the boom in this position. To raise the boom, operate the winch to slacken the line and then remove the block hook from the loop on the pedestal. Pull the pin from position 4 and raise the boom and insert the pin in position 1. The boom can now be telescoped out as needed.

To use the 45-degree position, remove the pin from hole 2, raise the boom and insert this pin in hole 3. The boom should be extended as needed before raising it to the 45-degree position.

To store the boom it must pivot on hole 2. Pin at position 4 to hold the boom in the vertical position. Place the hook in the pedestal loop and wind cable on winch to a light tension only. Remove the pendant and store it in the cab or a body compartment.

Figure 1. Boom Pin Locations



Care should be used when maneuvering loads into and out of the

vehicle. Do not raise loads higher than is needed to get the load into or out of the vehicle.

EXTENSION

The boom may be manually extended as needed. The boom must be set to the desired length before lifting the load. A boom stop is provided to prevent the inner boom from being inadvertently removed from the outer boom.

CAUTION!

All boom pins must be in place before lifting the load. The boom stop will not support a load. If proper boom pins are not installed the boom may collapse under load causing serious damage and possible injury or death.

ROTATION

The crane must be rotated manually. Tapered roller bearings are utilized to reduce the force required.

CAUTION!

The force required to rotate the crane will increase dramatically if the truck is not level or if the load causes the truck to lean. Outriggers or jackstands **MUST** be used.

CAUTION!

Extreme caution must be used when rotating heavy loads. Even with the use of outriggers or jackstands the truck may tilt as the crane is rotated. Even a small lean may cause the load to become uncontrollable.

BRAKE

The crane is equipped with a hand tightened band brake to help control the load when rotating.

CAUTION!

Even with the brake tightened the load may become uncontrollable if the vehicle becomes unlevel.

CAUTION!

The brake is not designed nor intended to hold the crane during transit. The crane must be held by a boom rest and/or teathered to the truck when not in use.

THIS PAGE INTENTIONALLY LEFT BLANK



HOUSTON, TEXAS
FAX: (800) 824-5559 (USA & Canada)
FAX: (713) 688-6324
PHONE: (713) 688-5533
www.liftmoore.com

THIS PAGE INTENTIONALLY LEFT BLANK



F1629-A
8/8/22

HOUSTON, TEXAS
FAX: (800) 824-5559 (USA & Canada)
FAX: (713) 688-6324
PHONE: (713) 688-5533
www.liftmoore.com

**LIST FOR BOX, CRANE PARTS L-21W-7 VH ATB
7ft**

Items with * have detailed DWG's.

P/N 29600- BOX, CRANE PARTS L-21W-7 VH ATB

- | | | |
|-----|---|-------|
| 1) | P/N 29601 - MANUAL, CRANE L-21W-7 VH ATB..... | 1pc |
| 2) | P/N 30448 - CONTROL, PENDANT L-15 & L-21..... | 1pc |
| 3) | P/N 31022 - WIRE, 25' #4 AWG BATTERY..... | 1pc |
| 4) | P/N 30728 - WIRE, GROUND #4 X 3' LONG..... | 1pc |
| 5) | P/N 30760 - PIN, HITCH 0.75 X 4.50 W/H-PIN..... | 2pcs |
| 6) | P/N 30815 - SCREW, HHC 0.50-13 X 2.50 GR8..... | 4pcs |
| 7) | P/N 30474 - WASHER, LOCK 0.50 GR5 PLATED..... | 4pcs |
| 8) | P/N 31957 - NUT, HEX 0.50-13 GR8 PLATED..... | 4pcs |
| 9) | P/N 16878 - BREAKER, CIRCUIT 150 AMP..... | 1pc |
| 10) | P/N 16922 - TERMINAL, LUG #4 GA 0.25 DIA..... | 2pcs |
| 11) | P/N 27490 - SWITCH, DISCONNECT COVER PLATE..... | 1pc |
| 12) | P/N 30766 - SWITCH, DISCONNECT..... | 1pc |
| 13) | P/N 17064 - TERMINAL, LUG #4 GA 0.37 DIA..... | 3 pcs |
| 14) | P/N 17010 - BRACKET, SWITCH MNT. ELE. CRN..... | 1pc |

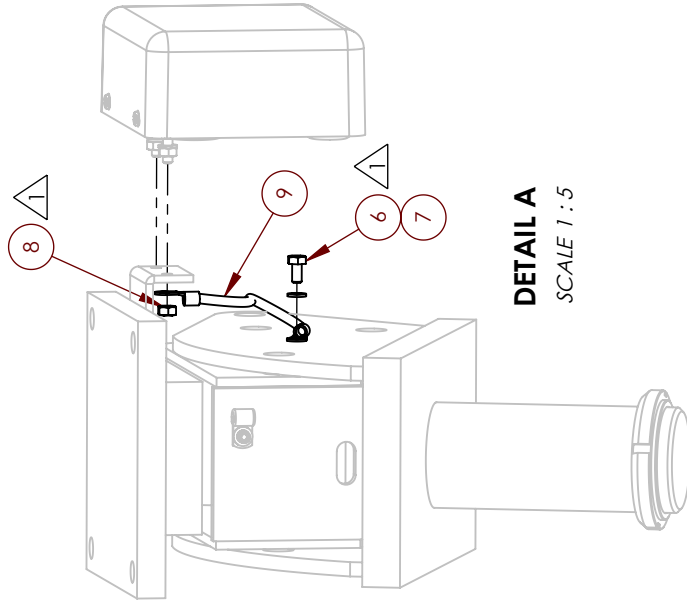
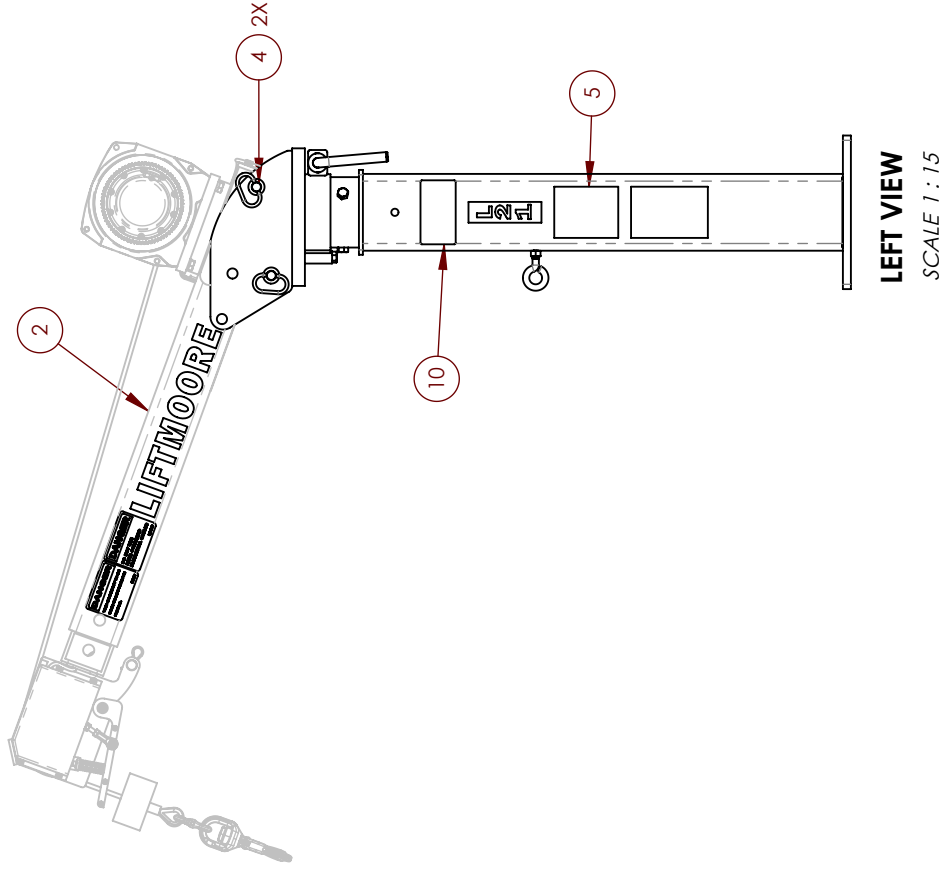
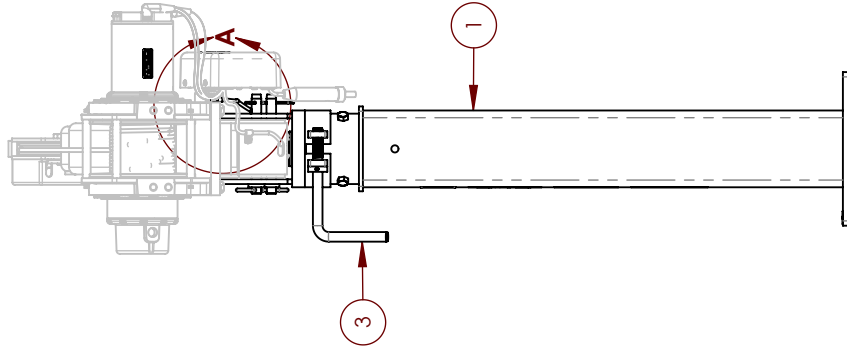


F2712-A
8/3/22

HOUSTON, TEXAS
FAX: (800) 824-5559 (USA & Canada)
FAX: (713) 688-6324
PHONE: (713) 688-5533
www.liftmoore.com

NOTE	DESCRIPTION
1	TORQUE TO 5FT-LBS

ITEM	PART NUMBER	DESCRIPTION	QTY
1	25374	BASE-HOUSING ASSY L-21 42.625"	1
2	29568	BOOM ASSY L-21W-7 ATB	1
3	30961	HANDLE, BRAKE L-21 & L-21-7	1
4	33203	PIN, HITCH 0.75 X 6.00 W/H-PIN	2
5	26507	PLATE, SERIAL L-21W & L-21-7W	1
6	30809	SCREW, HHC 0.25-20 X 0.50 GR5	1
7	30889	WASHER, LOCK 0.25 GR5 PLATED	1
8	30830	NUT, HEX 0.25-20 GR2 PLATED	1
9	18010	WIRE, BATTERY #6 X 15'	1
10	31146	DECAL KIT L-21	1
11	PFORM94	TIME SHEET L-21W	1



LIFTMOORE INC.
CRANE ASSY L-21W-7 VH ATB
W/ WINCH 23872 & SS ROPE

UNLESS SPECIFIED:
MACHINED PART
MINIMUM 250 RMS
ALL WELDS TO BE
MINIMUM 1/4"
DIM. TOLERANCES
XXX ± .030
XX ± .030
X ± .016
FRACTION ± 1/16
XX° ± .5°

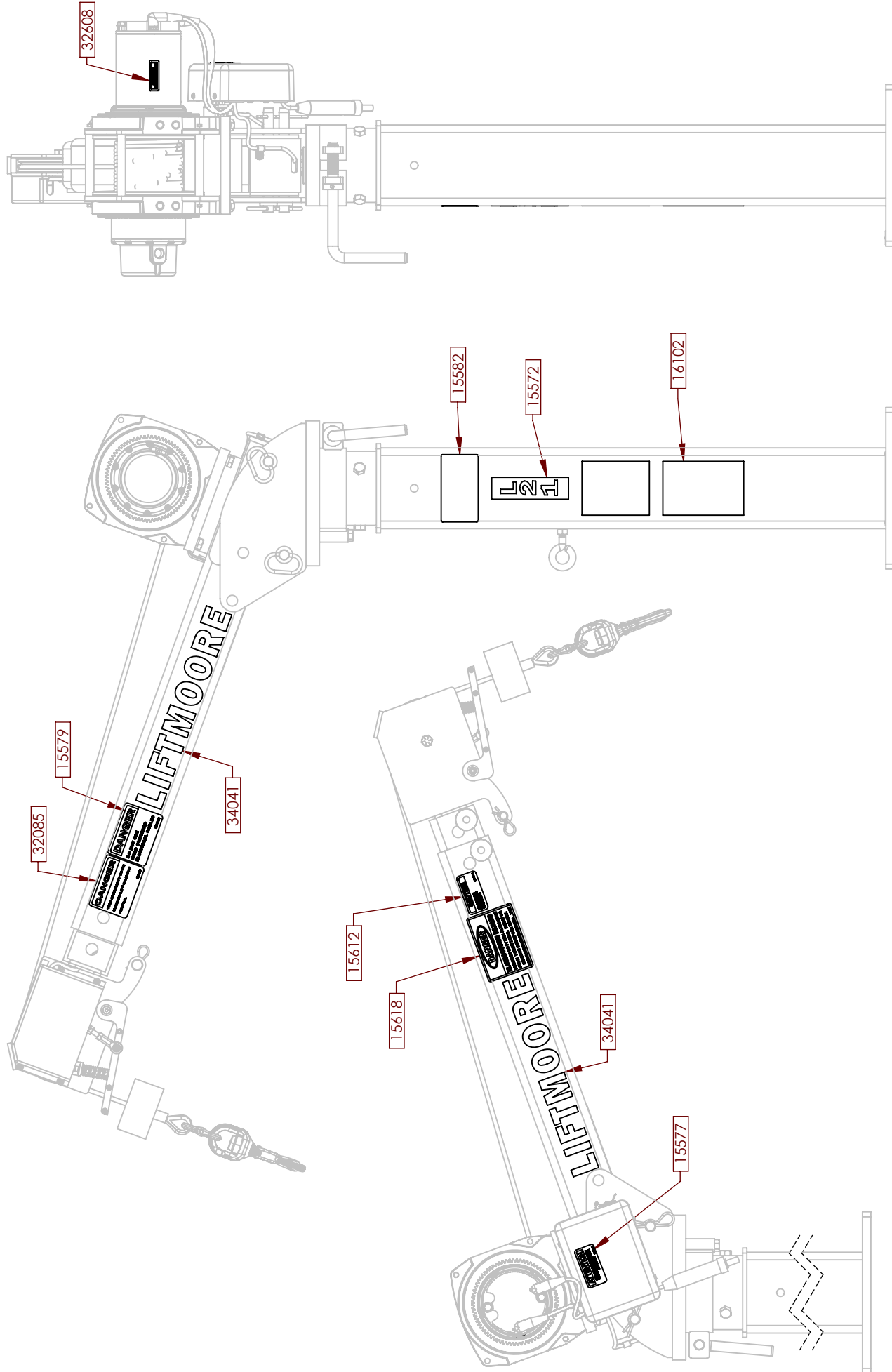
PROPRIETARY & CONFIDENTIAL
DRAWING IS THE SOLE PROPERTY OF
LIFTMOORE INC. AND REPRODUCTION
WITHOUT WRITTEN PERMISSION OF LIFTMOORE
INC. IS PROHIBITED.

THIRD ANGLE
PROJECTION

DRAWN: JE 08/02/2022 DWG. NO.
MIRL: SHEET 1 - 2
CHECKED: AT 08/02/2022
ENG APPR: DF 08/02/2022

WEIGHT: 267.044 Lbs

REV B
29597



UNLESS SPECIFIED
 MACHINED PART
 MINIMUM 250 RMS
 ALL WELDS TO BE
 MINIMUM 1/4"

PROPRIETARY & CONFIDENTIAL
 DRAWING IS THE SOLE PROPERTY OF
 LIFTMOORE INC. AND REPRODUCTION
 WITHOUT WRITTEN PERMISSION OF LIFTMOORE
 INC. IS PROHIBITED.

**THIRD ANGLE
 PROJECTION**

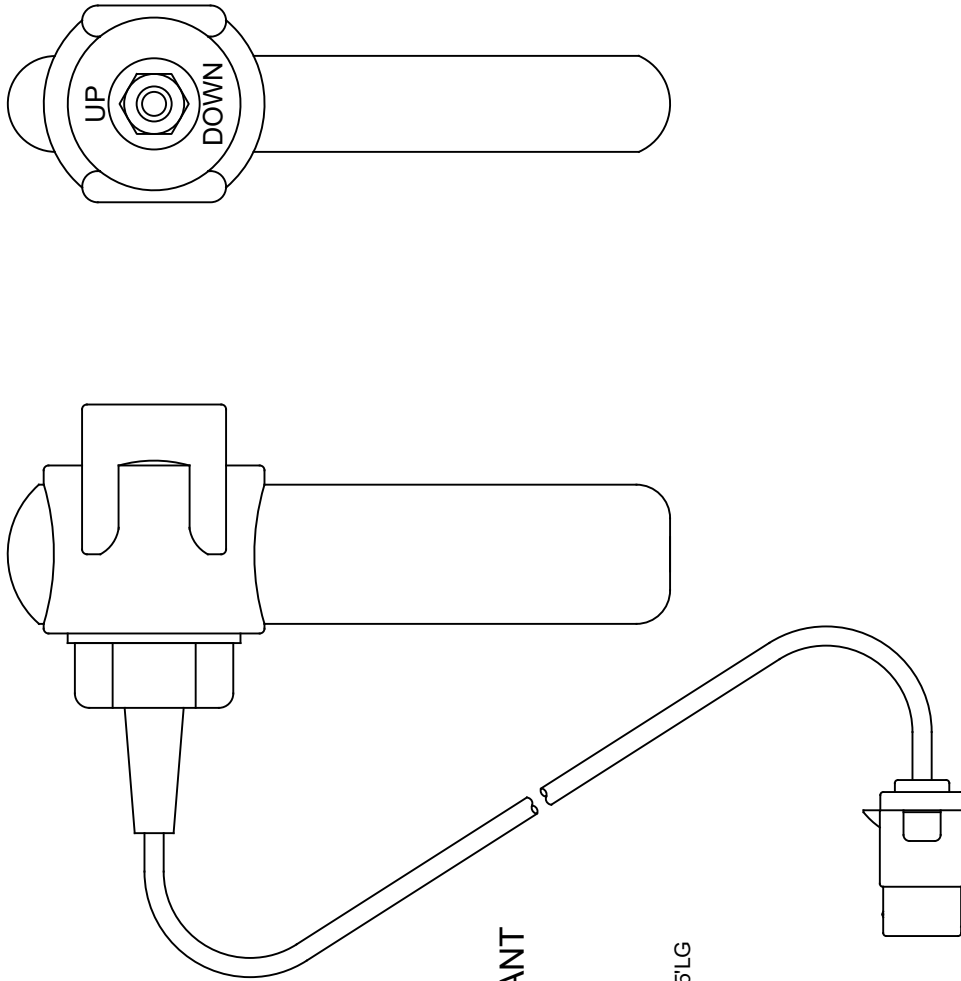
CHECKED AT 08/02/2022
 ENG APPR DF 08/02/2022

DIM. TOLERANCES
 .XXX ± .005
 .XX ± .030
 .X ± .116
 XX° ± .5°

LIFTMOORE INC.
 CRANE ASSY L-21W-7 VH ATB
 W/ WINCH 23872 & SS ROPE

DRAWN JE 08/02/2022 DWG. NO.
 MTRL: SHEET 2 - 2
 WEIGHT: 267.044 Lbs

REV B
 29597



COMPLETE PENDANT

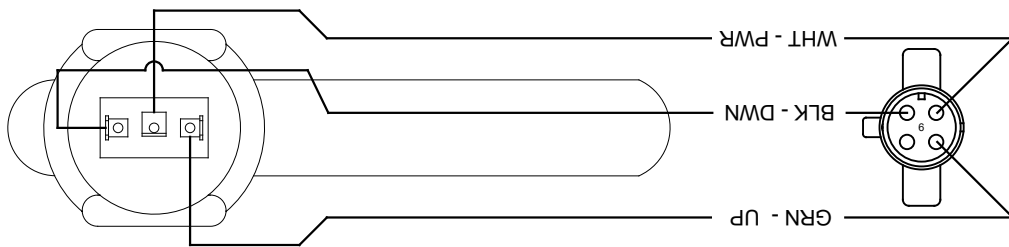
P/N 30448 CONTROL, PENDANT
L-15 & L-21

PENDANT, LESS PLUG

P/N 15129 CONTROL, PENDANT BLANK 12.5'LG

REPLACEMENT PLUG

P/N 30908 PLUG, CONTROL 4-PIN



FRONT VIEW



Houston TX
(713)-688-5533
www.liftmoore.com

DRWN BY: JC

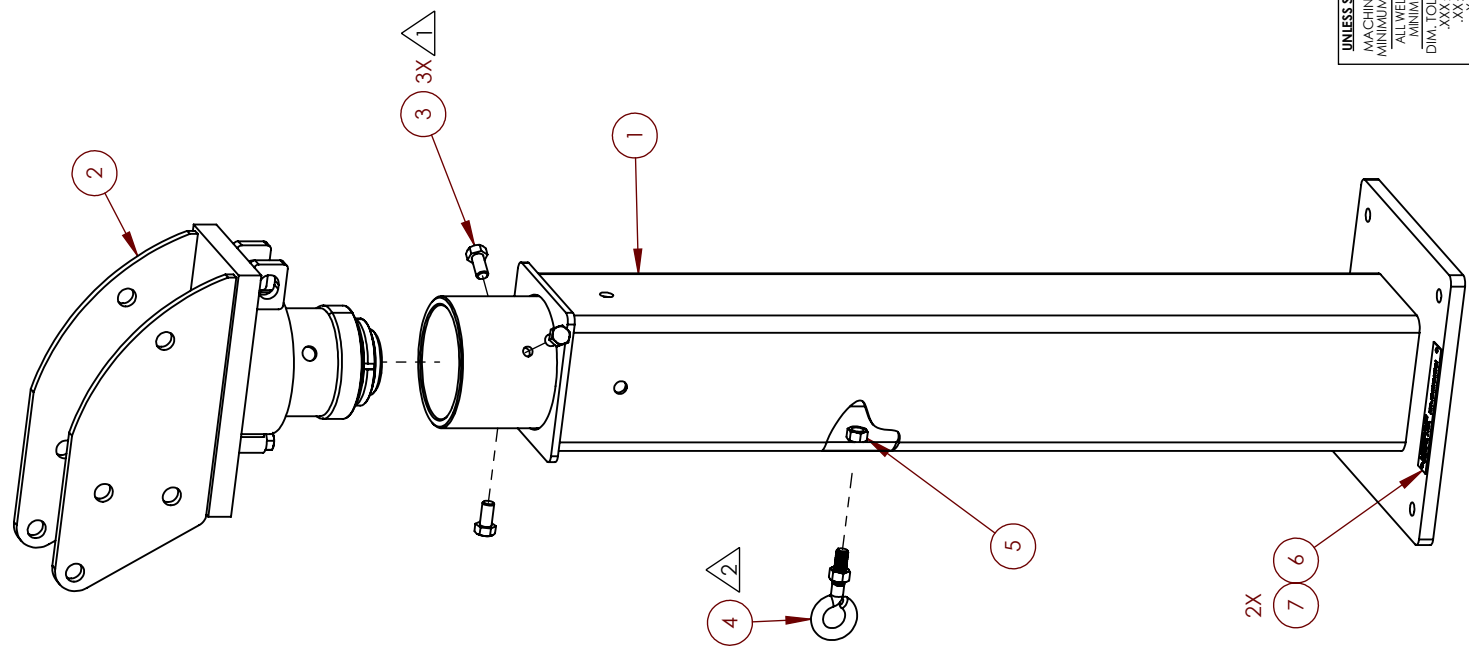
DATE: 04/24/08

CONTROL, PENDANT L-15 & L-21
12.5 FT. W/ PLUG & BOOT

DRAWING NO.

30448-A

NOTE	DESCRIPTION
1	TORQUE TO 50 FT-LBS
2	TORQUE TO 110 FT-LBS



ITEM	PART NUMBER	DESCRIPTION	QTY
1	31726	PEDESTAL WELDMNT L-21 VH	1
2	25373	FLANGE FRAME ASSEMBLY L-21 ATB	1
3	30461	SCREW, HHC 0.50-13 X 1.00 GR8	3
4	31028	SCREW, EYE 0.50-13 X 4.00 OAL	1
5	31957	NUT, HEX 0.50-13 GR8 PLATED	1
6	23389	PLATE, SERIAL NO. MACHINING	1
7	22406	SCREW, DRIVE	2

UNLESS SPECIFIED
 MACHINED PART
 MINIMUM 250 RMS
 ALL WELDS TO BE
 MINIMUM 1/4"

PROPRIETARY & CONFIDENTIAL
 DRAWING IS THE SOLE PROPERTY OF
 LIFTMOORE INC. AND REPRODUCTION
 WITHOUT WRITTEN PERMISSION OF LIFTMOORE
 INC. IS PROHIBITED.

THIRD ANGLE
 PROJECTION

CHECKED: JE 02/04/2021
 ENG APPR: DF 02/04/2021

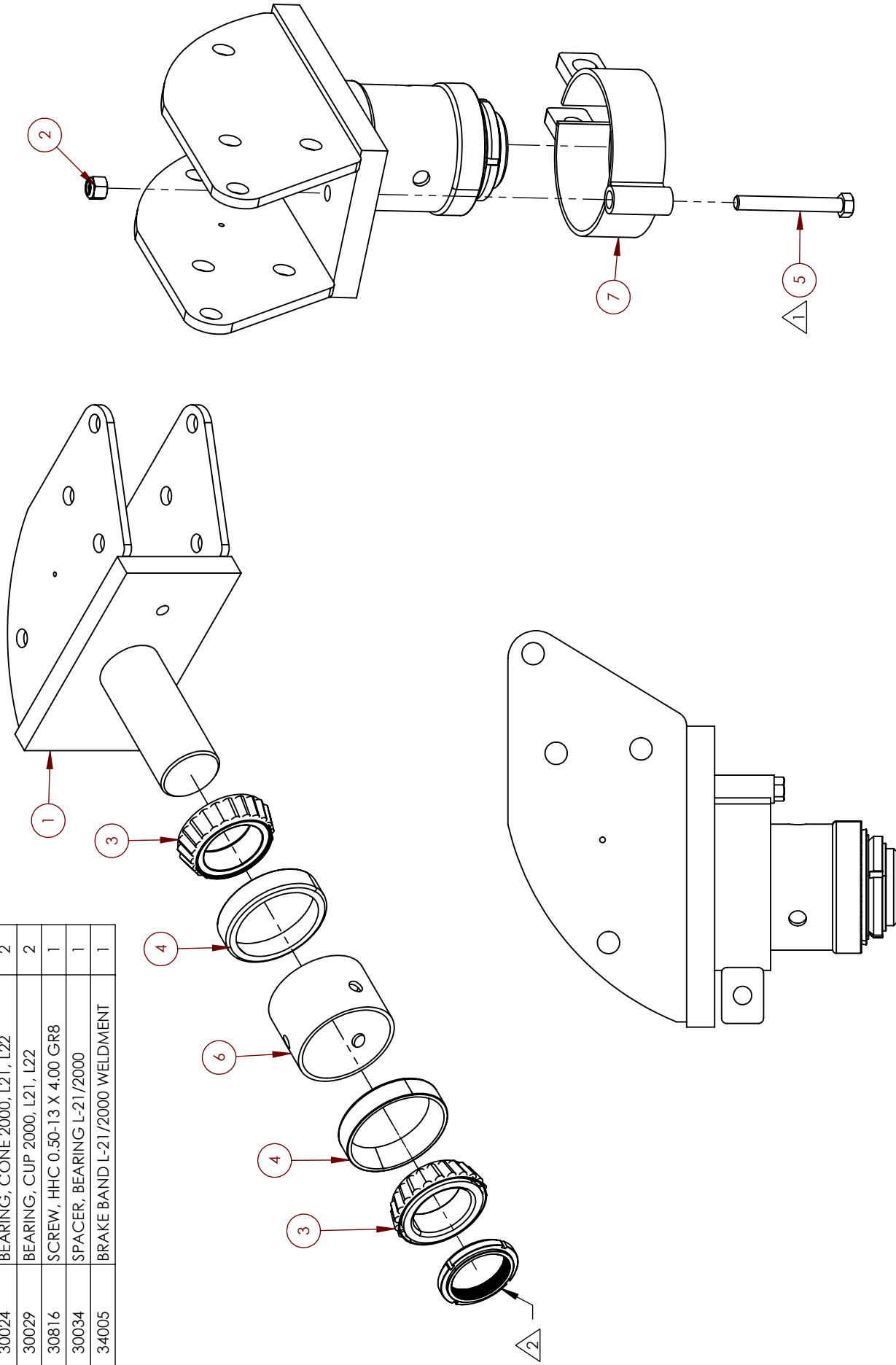
DRAWN: AT 02/04/2021
 MTRL: SHEET 1-1
 WEIGHT: 72.824 LBS

REV B
 25374

LIFTMOORE INC.
 BASE-HOUSING ASSY L-21 42.625"
 ATB

NOTE	DESCRIPTION
1	TORQUE TO 110 FT-LBS
2	TORQUE TO 170 FT-LBS

ITEM	PART NUMBER	DESCRIPTION	QTY
1	25372	FLANGE FRAME L-21 WELDMENT-ATB	1
2	30835	NUT, HEX NYLOC 0.50-13 GRADE 8	1
3	30024	BEARING, CONE 2000, L21, L22	2
4	30029	BEARING, CUP 2000, L21, L22	2
5	30816	SCREW, HHC 0.50-13 X 4.00 GR8	1
6	30034	SPACER, BEARING L-21/2000	1
7	34005	BRAKE BAND L-21/2000 WELDMENT	1



RIGHT VIEW

LIFTMOORE INC.

FLANGE FRAME ASSEMBLY L-21 ATB

UNLESS SPECIFIED:
 MACHINED PART
 MINIMUM 250 RMS
 ALL WELDS TO BE
 MINIMUM 1/4"
 DIM. TOLERANCES
 .XXX ± .005
 .XX ± .030
 .X ± .116
 FRACTION ± 1/16
 XX° ± .5°

PROPERTY & CONFIDENTIAL
 DRAWING IS THE SOLE PROPERTY OF
 LIFTMOORE INC. AND REPRODUCTION
 WITHOUT WRITTEN PERMISSION OF LIFTMOORE
 INC. IS PROHIBITED.

THIRD ANGLE
 PROJECTION

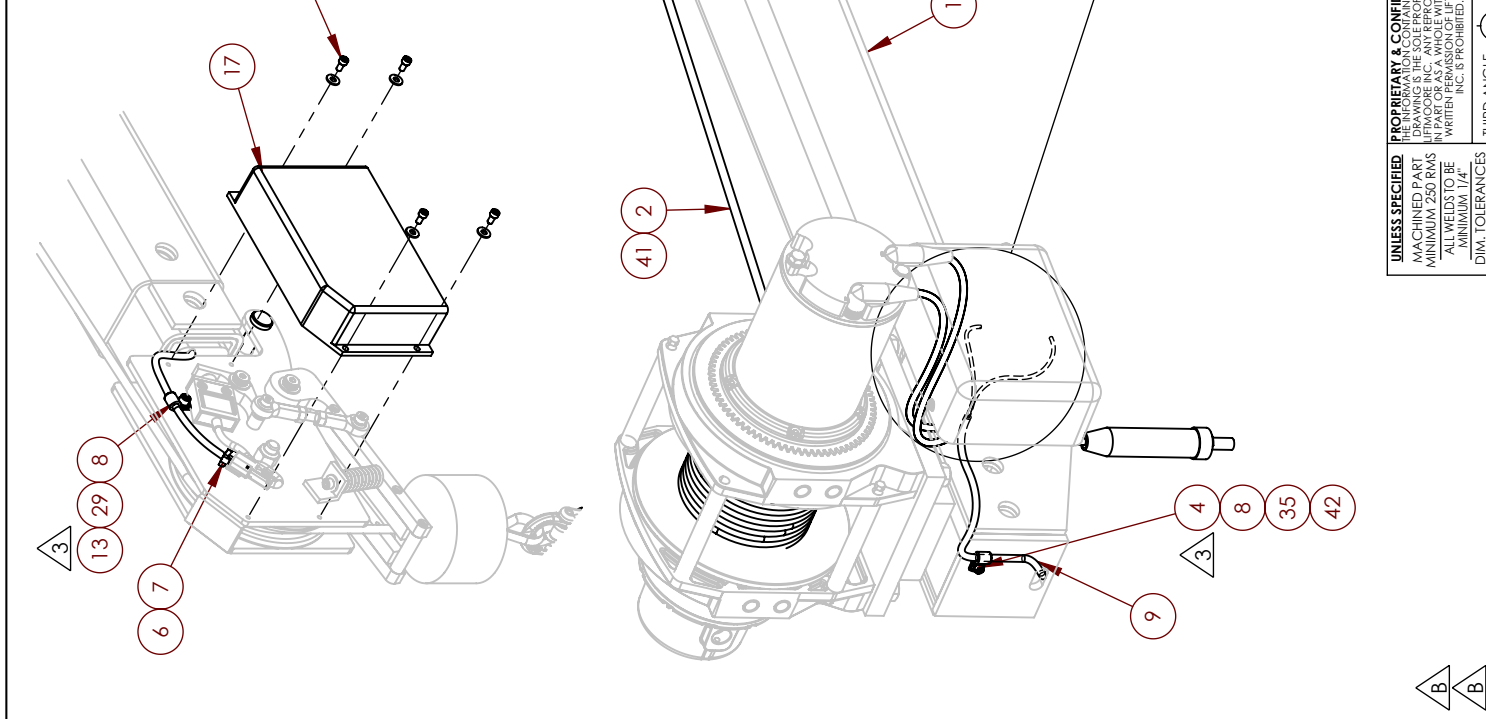
CHECKED: JE 02/04/2021
 ENG APPR: DP 02/04/2021

DRAWN: AT 02/04/2021
 MTRL: SHEET 1 - 1
 WEIGHT: 40.504 Lbs

REV B
 25373

DESC: CONVERTED TO SOLIDWORKS

NOTE	DESCRIPTION
1	HAND TIGHTEN MAKE SURE SHEAVE SPIN FREELY
2	TORQUE TO 2 FT-LBS
3	TORQUE TO 5 FT-LBS
4	TORQUE TO 11 FT-LBS
5	TORQUE TO 17 FT-LBS



ITEM	PART NUMBER	DESCRIPTION	QTY
1	26982	BOOM, PRE-ASSY L-21W-7 ATB	1
2	29393	ROPE, WIRE 0.25 X 62 W/THB&LP	1
3	15566	TERMINAL, P.O. FEMALE 14-16 GA	1
4	17164	SCREW, SOC HD 10-24 X 0.62 SS	9
5	19628	SHEAVE ASSY 5.90PD X 0.25 ROPE	1
6	19846	WEDGE, DEUTSCH 2P PLUG	1
7	19847	CONNECTOR, DITCH 2P PLUG	1
8	24960	CLAMP, HOSE SUPPORT 0.25 ID	2
9	25003	EWB, L-21-7 LIMIT SWITCH ATB	1
10	25130	SCREW, SHOULDER 0.375 X 0.625	1
11	25151	SPRING, COMPRESSION, 76LBS.	1
12	26334	SPACER, LEVER 1.865 MACH	1
13	26582	SCREW, SOC HD 0.25-20 X 0.37SS	1
14	26848	SCREW, SHOULDER 0.375 X 3.00	1
15	26849	BALL JOINT ROD END	2
16	26851	SCREW, SOC HD 0.25-20 X 2.75SS	1
17	26852	COVER, SMALL BAIL ATB	1
18	26859	LEVER, ATB BAIL 8.375" RT MACH	1
19	26860	LEVER, ATB BAIL 8.375" LT MACH	1
20	26862	LEVER, ANTI-TWO BLOCK MACH	1
21	26866	LEVER, BAIL SUPPORT - MACH	2
22	26907	SCREW, SHOULDER 0.31 X 0.625	2
23	26909	SCREW, SOC HD 10-24 X 0.37	4
24	26910	WASHER, FLAT #10 316SS	4
25	26947	ALL THREAD STUD .31-24 X 2.0"	1
26	27132	SWITCH, LIMIT ATB ASSY 2W DITCH	1
27	30213	PICKLE (WEIGHT) PAINTED WHITE	1
28	30835	NUT, HEX NYLOC 0.50-13 GRADE 8	1
29	30889	WASHER, LOCK 0.25 GR5 PLATED	1
30	30998	NUT, HEX 0.31-24 GR2 PLATED	2
31	31036	STOP, BOOM INNER ASSY STD.	2
32	31603	CLIP, HAIRPIN 0.50 - 0.62	1
33	32118	TERMINAL, P.O. MALE 14-16 GA	1
34	32368	WASHER, FLAT 0.37 SAE 304SS	3
35	32639	WASHER, LOCK #10 GR2 PLATED	3
36	32657	PIN, CLEVIS 0.56 X 2.00 PLATED	1
37	32660	SCREW, HHC 0.50-13 X 2.50 GR8	1
38	33352	WASHER, FLAT 0.25 SAE SS GR304	1
39	33424	BUSHING, 0.37 X 0.50 X 0.50L N	5
40	34256	NUT, HEX NYLOC 0.31-18 SS 304	1
41	70022	WEDGE, WIRE ROPE ANCHOR	1
42	33145	WASHER, FLAT #10 GR2 PLATED	1
43	22989	LINK, COUPLING G8-10	1
44	27133	HOOK, SWIVEL 2.6-TON -BEARING	1

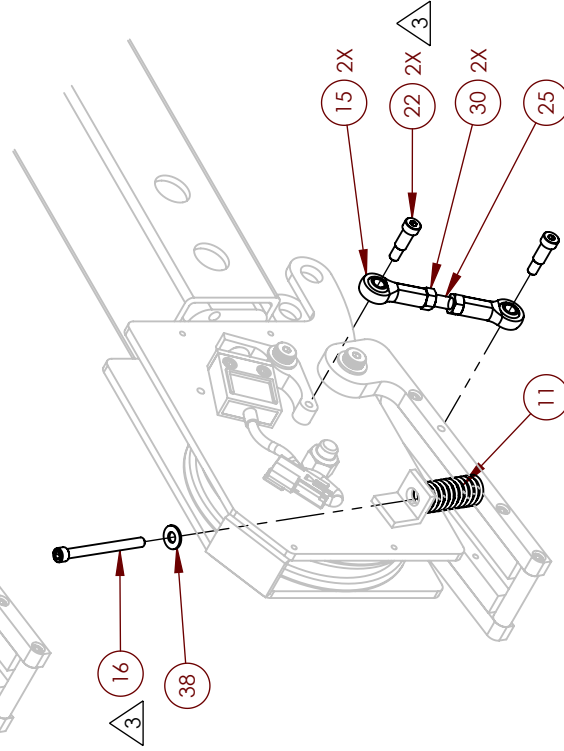
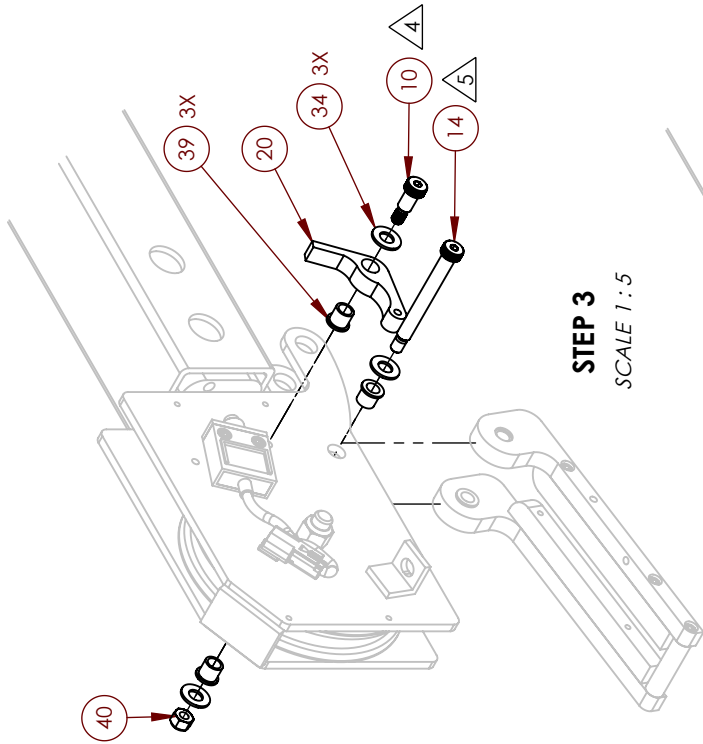
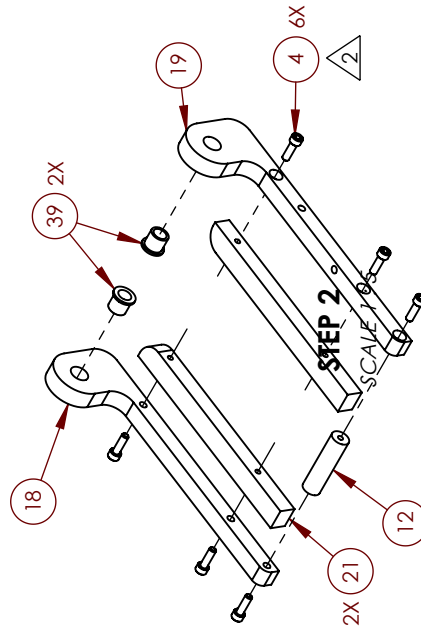
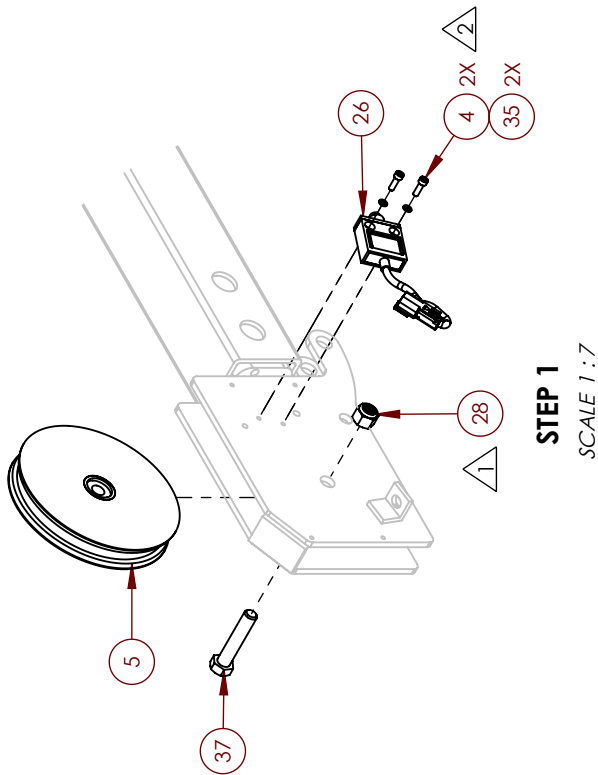
LIFTMOORE INC.
BOOM ASSY L-21W-7 ATB
 W/ WINCH 23872 & SS ROPE
 DWG. NO. 29568
 SCALE 2:9
 DETAIL A

UNLESS SPECIFIED	PROPRIETARY & CONFIDENTIAL
MACHINED PART	DRAWING IS THE SOLE PROPERTY OF
MINIMUM 250 RMS	LIFTMOORE INC. AND REPRODUCTION
ALL WELDS TO BE	WITHOUT WRITTEN PERMISSION OF LIFTMOORE
MINIMUM 1/4"	INC. IS PROHIBITED.
DIM. TOLERANCES	
.XXX ± .005	
.XX ± .030	
FRAC. ± 1/16	
XX° ± .5°	

CHECKED	AT	08/02/2022
ENG APPR	DF	08/02/2022

BY	JE	08/02/2022	REV	B
----	----	------------	-----	---

DISC: ADDED HOOK AND LINK COUPLING TO ASSEMBLY
--



UNLESS SPECIFIED:
MACHINED PART
MINIMUM 250 RMS
ALL WELDS TO BE
MINIMUM 1/4"
DIM. TOLERANCES
.XXX ± .005
.XX ± .030
FRAC. ± 1/16
XX° ± .5°

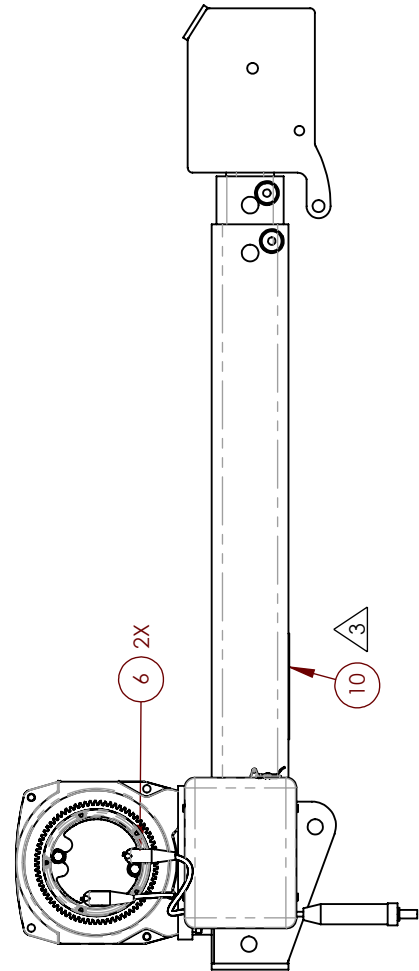
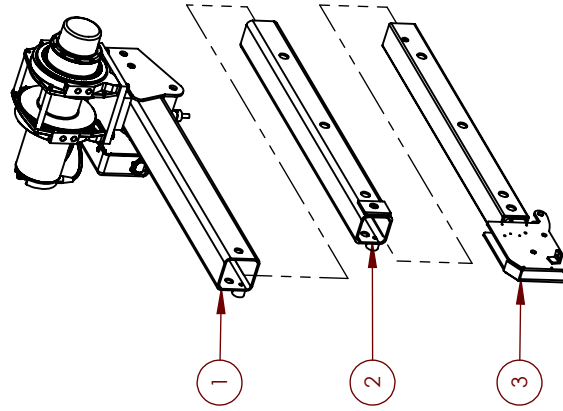
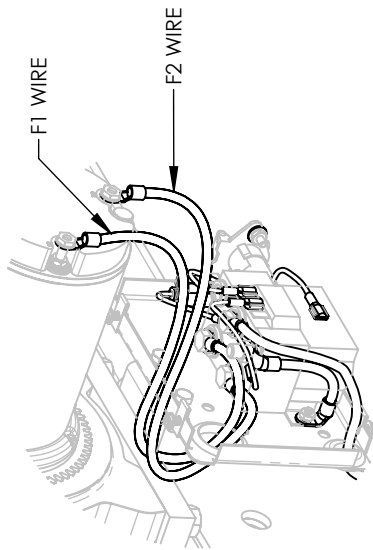
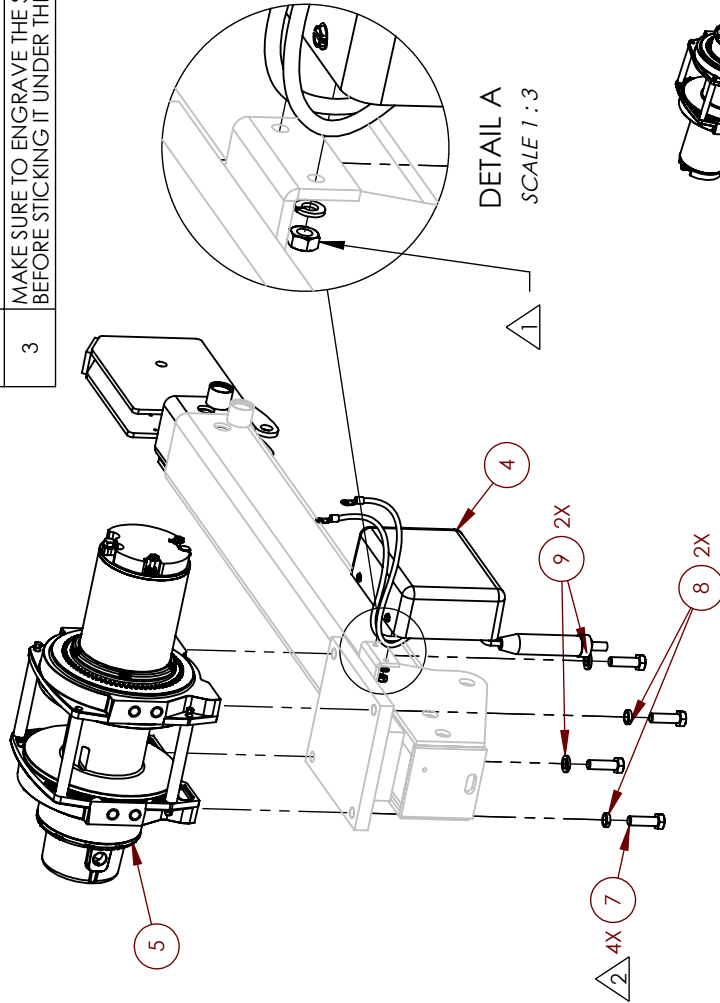
THIRD ANGLE
PROJECTION

PROPERTY & CONFIDENTIAL
DRAWING IS THE SOLE PROPERTY OF
LIFTMOORE INC. AND REPRODUCTION
WITHOUT WRITTEN PERMISSION OF LIFTMOORE
INC. IS PROHIBITED.

LIFTMOORE INC.		BOOM ASSY L-21W-7 ATB	
W/ WINCH 23872 & SS ROPE		DWG. NO.	
DRAWN: JE	08/02/2022	MIRL:	SHEET 2 - 2
CHECKED: AT	08/02/2022	ENG APPR: DF	08/02/2022
WEIGHT: 1.79.229 Lbs		29568	
REV		B	

NOTE	DESCRIPTION
1	TORQUE TO 12 FT-LBS
2	TORQUE TO 35 FT-LBS
3	MAKE SURE TO ENGRAVE THE SERIAL PLATE BEFORE STICKING IT UNDER THE BOOM

ITEM	PART NUMBER	DESCRIPTION	QTY
1	26129	BOOM, OUTER L-21W ATB WELD	1
2	16267	BOOM, INNER 1ST L-21-7 WELD	1
3	26981	BOOM, INNER 2ND L-21-7 WLD ATB	1
4	26130	CONTACTOR BOX ASSY L-8/L-21ATB	1
5	23872	WINCH, ELEC 12VDC 4000	1
6	70009	BOOT, RUBBER 1 & 1/0	2
7	33080	SCREW, HHC M12 X 1.75-40MM GR8	4
8	30983	WASHER, LOCK 0.50 HICOLLAR GR5	2
9	30474	WASHER, LOCK 0.50 GR5 PLATED	2
10	23336	PLATE, SERIAL NO. BLANK	1



UNLESS SPECIFIED
 MACHINED PART
 MINIMUM 250 RMS
 ALL WELDS TO BE
 MINIMUM 1/4"
 DIM. TOLERANCES
 .XXX ± .005
 .XX ± .030
 FRACTION ± 1/16
 XX° ± .5°

PROPRIETARY & CONFIDENTIAL
 DRAWING IS THE SOLE PROPERTY OF
 LIFTMOORE INC. AND REPRODUCTION
 WITHOUT WRITTEN PERMISSION OF LIFTMOORE
 INC. IS PROHIBITED.

THIRD ANGLE
 PROJECTION

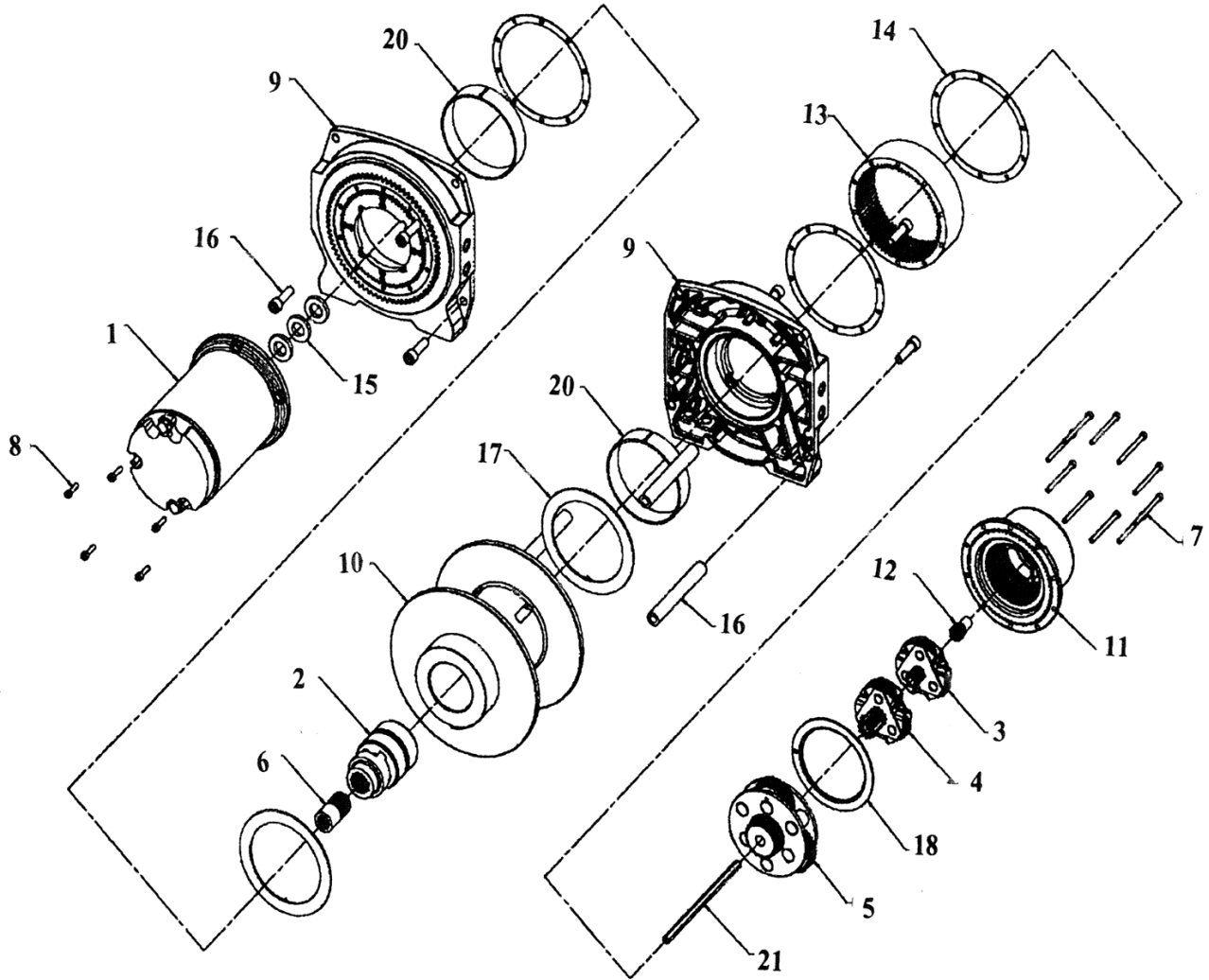
CHECKED: JE 02/04/2021
 ENG APPR: DP 02/04/2021

LIFTMOORE INC.
 BOOM, PRE-ASSY L-21W-7 ATB
 W/ WINCH 23872 W/ ATB

DRAWN: AT 02/04/2021 DWG. NO.
 MTRL: SHEET 1-1
 WEIGHT: 164.487 Lbs

REV C
 26982

WINCH DC2000 12VDC P/N 23872



SERVICE PARTS LIST: DC2000LF HOIST-12V P/N 23872

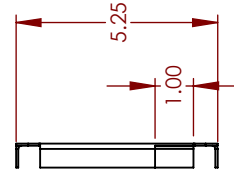
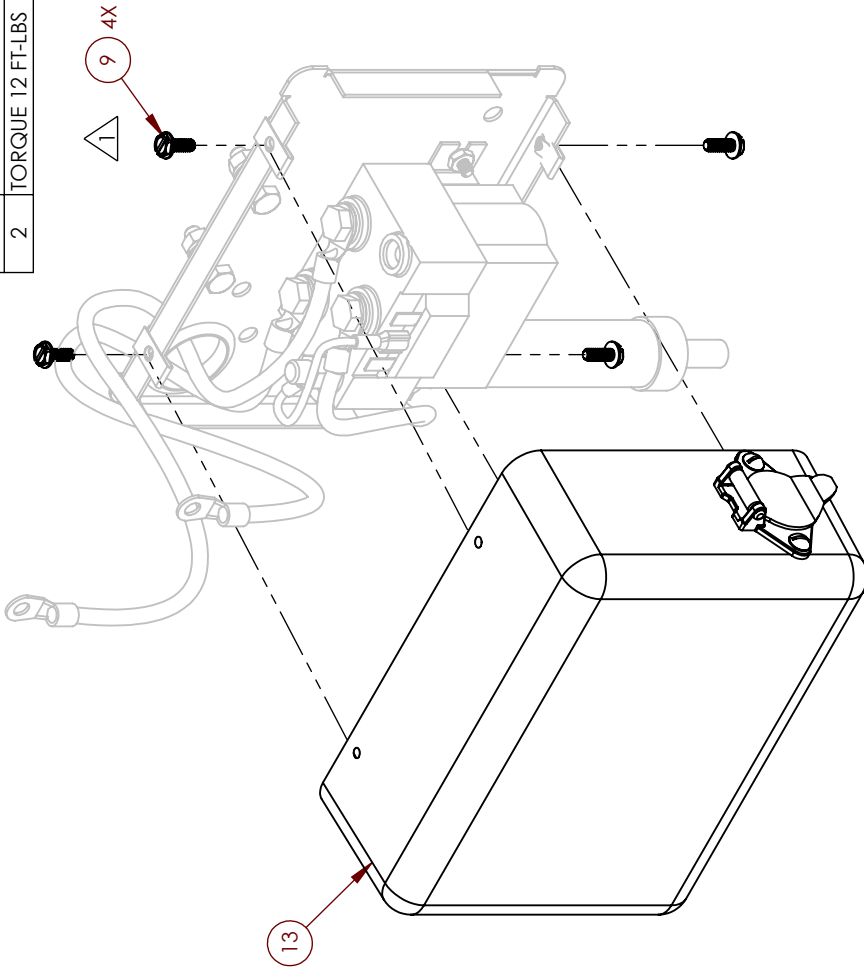
ITEM REFERENCE		ITEM / KIT No.
1	MOTOR SPLINED 12V DC	WI*84211
2	BRAKE ASSEMBLY DC2000	WI*63550
3	CARRIER ASSY, STAGE 1	WI*28430
4	CARRIER ASSY, STAGE 2	WI*28433
5	CARRIER ASSY, STAGE 3	WI*28115
6	COUPLER, MOTOR/BRAKE	WI*32149
7	CPSCR, 10-24 X 2-1/4-HEX SOCKET HEAD-PI	WI*13850
8	CPSCR, SOC, 10-24 X 3/4, GR9 (KB)	WI*5553
9	(MTO) S/P DRUM SUPPORT, GEAR END	WI*85575
10	DRUM, (KB) 2000-MF, 4.25 DIA	WI*31618
11	SVC KIT END HOUSING SUBASSY, CLUTCH PLUG	WI*85583
12	GEAR, SUN, 12 TOOTH, STAGE 1	WI*13874
13	RING GEAR, ARG, 75 TOOTH	WI*25308
14	HOUSING, GASKET	WI*13848
15	SPACER, MOTOR	WI*15271
16	SVC KIT TIE ROD, ALUMN, .625 X 4.92	WI*85579
17	WASHER, TRUST, NYLATRON, CIM	WI*30277
18	WASHER, TRUST, NYLON, MIDRANGE	WI*13826
19	PARTS PACK, DC2000 HOIST	WI*60049
20	BUSHING DRUM NYLATRON	WI*30274
21	SHAFT-DRIVE-HEX 5/16 X 6.85	WI*84346



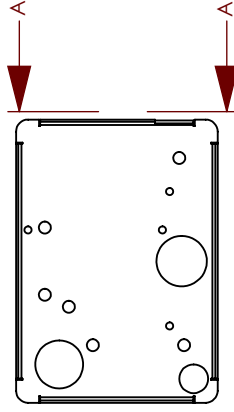
23872-C
06/11/15

HOUSTON, TEXAS
 FAX: (800) 824-5559 (USA & Canada)
 FAX: (713) 688-6324
 PHONE: (713) 688-5533
www.liftmoore.com

NOTE	DESCRIPTION
1	TORQUE 2 FT-LBS
2	TORQUE 12 FT-LBS

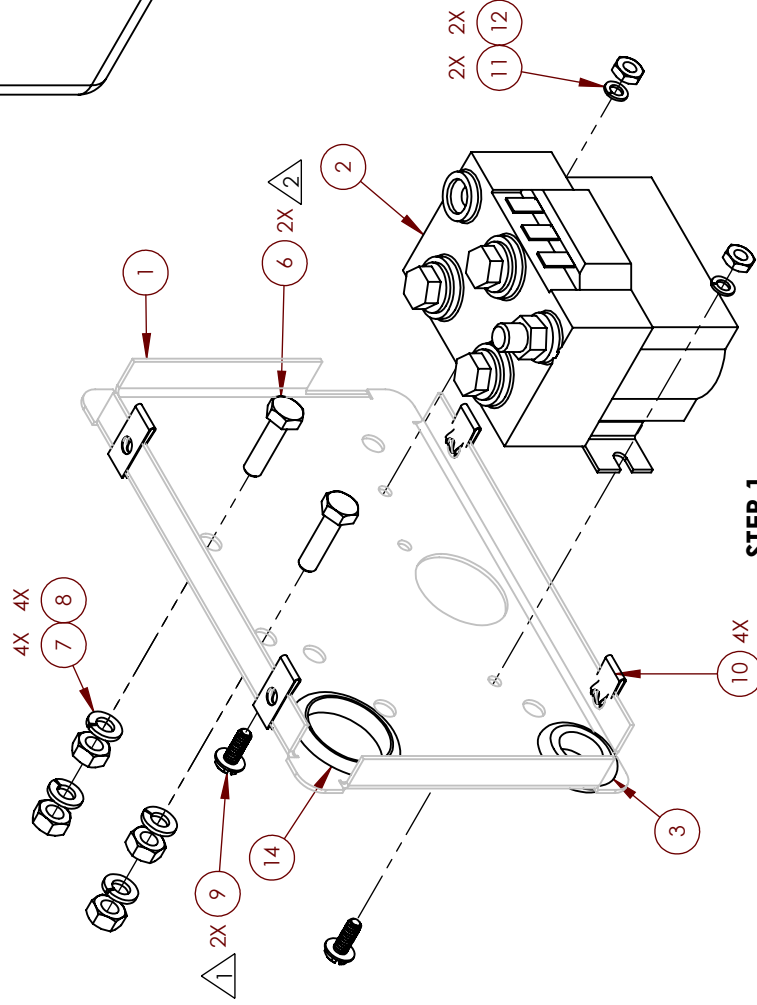


SECTION A-A
CUT FLANGE AS SHOWN
TO FIT ITEM P/N 29146
SCALE 1 : 5



FRONT VIEW
SCALE 1 : 5

ITEM	PART NUMBER	DESCRIPTION	QTY
1	33084	PLATE, SOLENOID MOUNT 3200	1
2	WI 34038	CONTACTOR, DP SEALED	1
3	30691	GROMMET, RUBBER 5/8"ID X 5/16"	1
4	32121	WIRE, BATTERY #6 X 15" W/TRM	1
5	30793	WIRE, BATTERY #6 X 18" W/TRM	1
6	30810	SCREW, HHC 0.25-20 X 1.00 GR5	2
7	30889	WASHER, LOCK 0.25 GR5 PLATED	4
8	30830	NUT, HEX 0.25-20 GR2 PLATED	4
9	33144	SCREW, MH HX 10-24 X 0.50	6
10	33102	NUT, U-TYPE SPRING 10/24	4
11	32639	WASHER, LOCK #10 GR2 PLATED	2
12	31576	NUT, HEX 10-24 GR2 PLATED	2
13	26146	COVER, CONT. BOX W/4-PIN SOCK.	1
14	33622	GROMMET, RUBBER 1-1/8" I.D. X	1
15	17209	EW, BFA7BBR EXTERNAL GND_JUMP	1
16	30791	WIRE, BATTERY #6 X 3.50" W/TRM	1
17	32120	WIRE, BATTERY #4 X 15" W/MECON	1



STEP 1

SCALE 1 : 2.5

UNLESS SPECIFIED:
MACHINED PART
MINIMUM 250 RMS
ALL WELDS TO BE
MINIMUM 1/4"
DIM. TOLERANCES
XXX ± .005
XX ± .030
FRAC ± 1/16
XX° ± .5°

PROPRIETARY & CONFIDENTIAL
DRAWING IS THE SOLE PROPERTY OF
LIFTMOORE INC. AND REPRODUCTION
WITHOUT WRITTEN PERMISSION OF LIFTMOORE
INC. IS PROHIBITED.

THIRD ANGLE
PROJECTION

CHECKED: JIE 02/04/2021
ENG APPR: DPF 02/04/2021

DRAWN: JAT 02/04/2021
MTRL: SHEET 1 - 2
WEIGHT: 3.896 Lbs

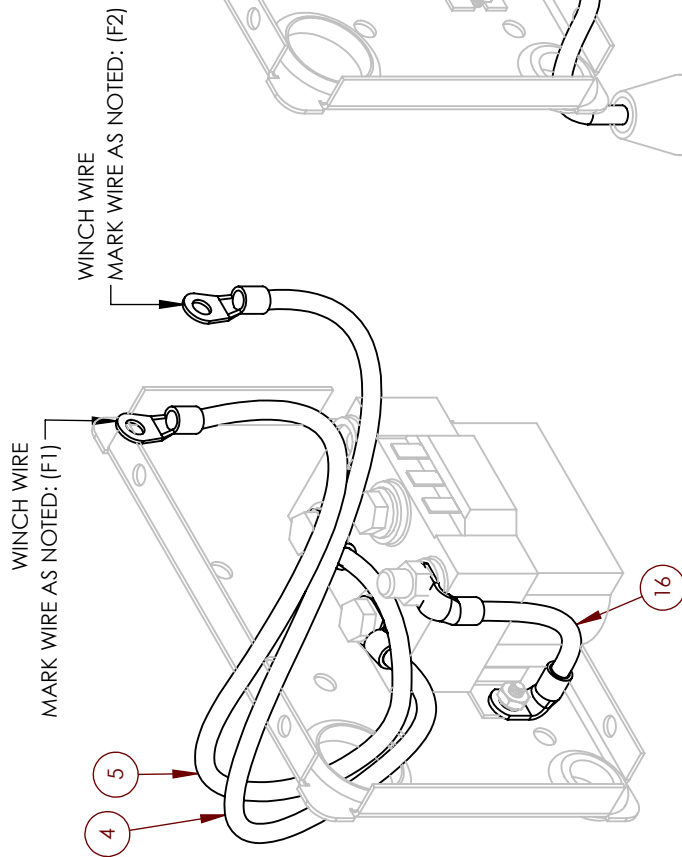
REV A
26130

LIFTMOORE INC.

CONTACTOR BOX ASSY L-8/L-21ATB

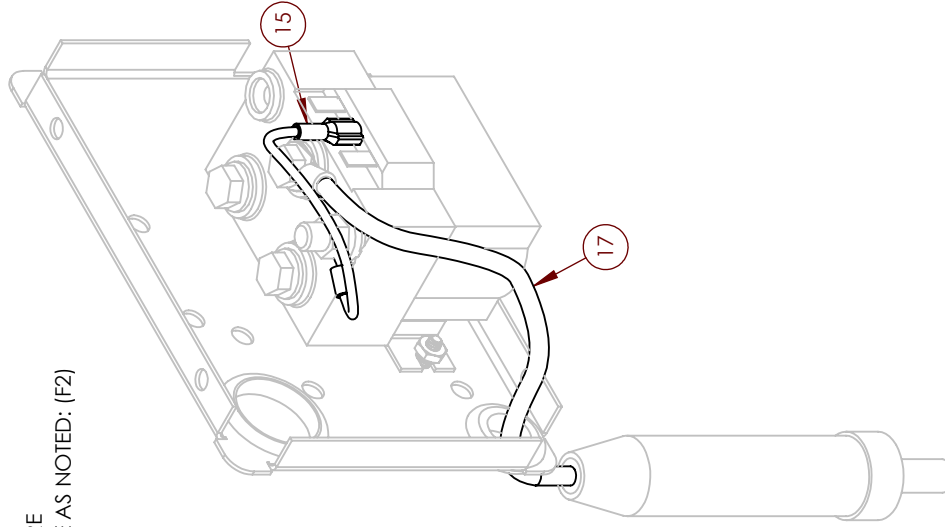
STEP 2

SCALE 1 : 2.5



STEP 3

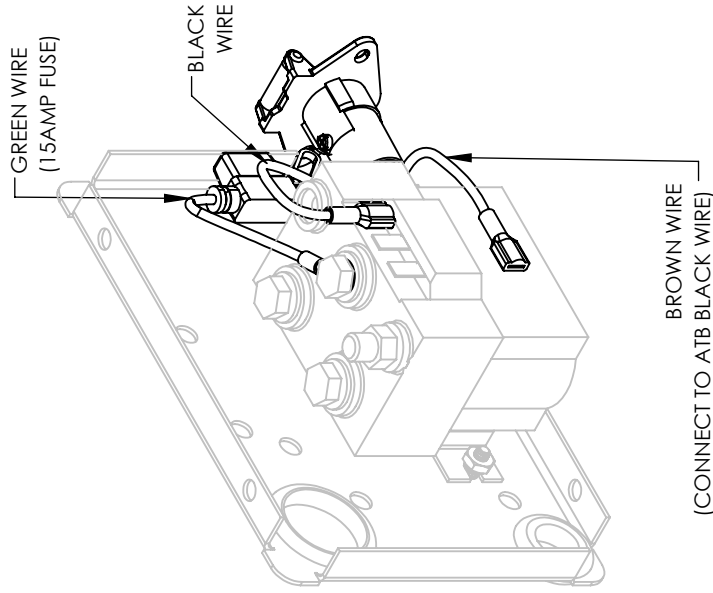
SCALE 1 : 2.5



STEP 4

COVER HIDDEN

SCALE 1 : 2.5



UNLESS SPECIFIED
 MACHINED PART
 MINIMUM 250 RMS
 ALL WELDS TO BE
 MINIMUM 1/4"
 DIM. TOLERANCES
 .XXX ± .005
 .XX ± .030
 .X ± .116
 XX° ± .5°

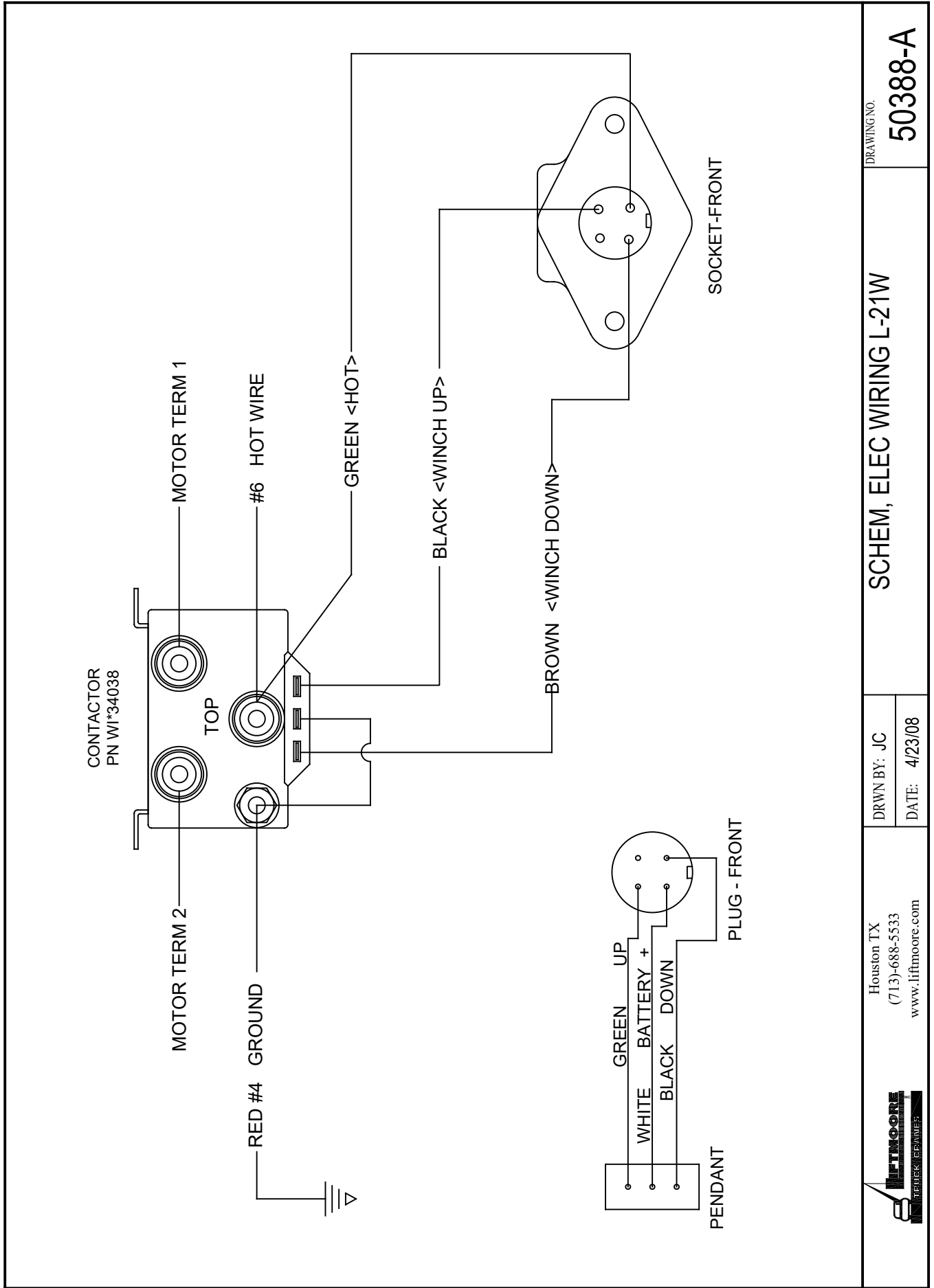
PROPRIETARY & CONFIDENTIAL
 DRAWING IS THE SOLE PROPERTY OF
 LIFTMOORE INC. AND REPRODUCTION
 WITHOUT WRITTEN PERMISSION OF LIFTMOORE
 INC. IS PROHIBITED.

THIRD ANGLE
 PROJECTION
 CHECKED JE 02/04/2021
 ENG APPR DF 02/04/2021

LIFTMOORE INC.

CONTACTOR BOX ASSY L-8/L-21ATB

DRAWN: AT	02/04/2021	DWG. NO.	REV
MIRL:	SHEET 2 - 2		A
WEIGHT: 3.896 Lbs		26130	



DRAWING NO.

50388-A

SCHEM, ELEC WIRING L-21W

DRWN BY: JC

DATE: 4/23/08

Houston TX
(713)-688-5533
www.liftmore.com



LIFTMOORE LIMITED WARRANTY

Parts and Structural

Liftmoore, Inc. warrants each LIFTMOORE crane to be free from defects in materials and workmanship for twelve (12) months from the date of delivery to the original customer. Under the terms of this warranty the crane structural components manufactured by LIFTMOORE, Inc. are warranted for thirty-six (36) months from the date of delivery to the original customer. LIFTMOORE, Inc. will repair or replace, as its sole discretion, any equipment or part that is returned f.o.b. to LIFTMOORE, Inc.'s plant at 7810 Pinemont Drive, Houston, Texas 77040, or to one of its authorized dealers, and is found by LIFTMOORE, Inc. or its authorized dealer to have been defective at the time of original delivery.

The foregoing warranty is the exclusive warranty made by LIFTMOORE, Inc. with respect to its cranes and is in lieu of all other warranties. ANY AND ALL OTHER WARRANTIES, EXPRESS OR IMPLIED, INCLUDING ANY WARRANTY OF MERCHANTABILITY OR FITNESS OF ANY CRANE FOR A PARTICULAR PURPOSE OR OPERATION, ARE HERBY EXPRESSLY DISCLAIMED.

The foregoing warranty applies only to LIFTMOORE cranes under normal use and service and does not apply in the event of damage caused by repair or alteration or damage during shipment, accident, negligence, overloading, or misuse, including operator's failure to follow any of the instructions issued with the crane.

This warranty is limited to the original purchaser and is not assignable. In order to submit a claim, the original purchaser must provide a copy of the original invoice for the crane in question within twelve (12) months following the delivery date and within 30 days from the date of repair.

The warranty applies only when the LIFTMOORE crane is used for commercial purposes and does not cover any purchase for use for personal, family or household purposes.

LIMITATION OF LIABILITY: LIFTMOORE, Inc.'s liability for any losses or damages resulting from any cause whatsoever, including LIFTMOORE, Inc.'s NEGLIGENCE or from a defective crane irrespective of whether such defects are discoverable or latent, shall in no event exceed the purchase price of the crane to which losses or damages are claimed, or at the election of LIFTMOORE, Inc., the repair or replacement of the defective crane.

In no event shall LIFTMOORE, Inc. be liable for any special, incidental, or consequential damages, including commercial losses or costs of any kind sustained by purchaser or any other person or for any damages for which purchaser may be liable to other persons by reason of any defect in any LIFTMOORE crane or any part thereof.

LIFTMOORE, Inc. reserves the right to make changes in design or construction of its cranes at any time without obligating itself to make such changes on cranes previously manufactured.

No agent, employee, or representative of LIFTMOORE, Inc. has authority to amend or modify the foregoing warranty or to bind LIFTMOORE, Inc. by any other warranty, guaranty, or assumption of liability.

In the event any provision of this warranty is for any reason held ineffective, the remaining provisions shall remain in full force and effect.

Some states do not allow limitations on how long an implied warranty lasts or the exclusion or limitation of incidental or consequential damages, so the above limitations and exclusions may not apply to you. This warranty gives you specific legal rights, and you may also have other legal rights that vary from state to state.

